



## MOORHOUSE ROAD, W2

£1,395,000 SHARE OF FREEHOLD

**AN IMPRESSIVE AND BEAUTIFULLY REFURBISHED TWO BEDROOM, TWO BATHROOM MAISONETTE IN THE HEART OF ARTESIAN VILLAGE, NOTTING HILL.**

**Share of Freehold, 2 Bedrooms, 1 Reception Room, 2 Bathrooms, Flat/Apartment, Terraced, Upper Floor without Lift, Period, Very Good decoration, 953 Approx Sq Ft**

**Winkworth**

Notting Hill Sales | 0207 727 3227 | nottinghill@winkworth.co.uk

[winkworth.co.uk](http://winkworth.co.uk)

See things differently



## DESCRIPTION:

This gloriously light apartment offers generous entertaining space, including a large west/east facing reception room and kitchen on the top floor with wonderful views over Notting Hill and beyond. There are two generously sized bedrooms on the lower level, the master bedroom has an abundance of built in storage and a large en-suite bathroom. The second bedroom has built in storage and there is a shower room on this level completing the accommodation.

## LOCATION:

Moorhouse Road is a peaceful tree lined street running north from Artesian Road, just beyond the popular stretch of Westbourne Grove, with many of Notting Hill's most popular boutiques and restaurants moments away.

## LOCAL AUTHORITY:

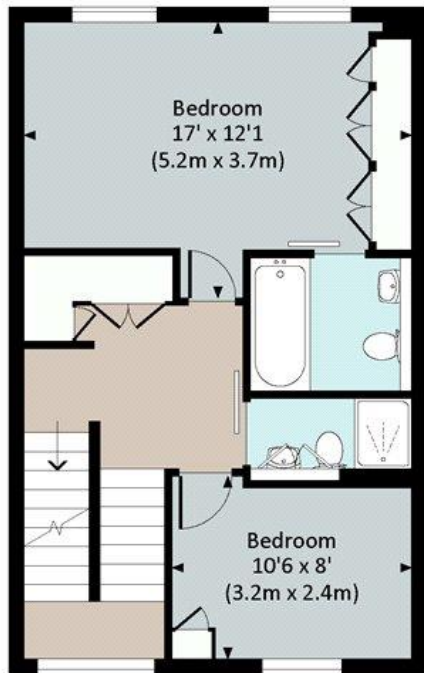
City of Westminster



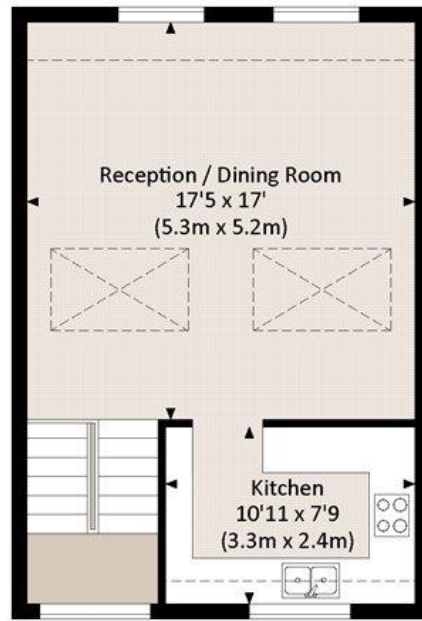
# MOORHOUSE ROAD, W2

Approx. gross internal area 913 Sq Ft. / 84.8 Sq M.

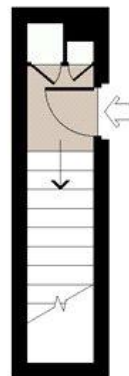
Approx. gross internal area 953 Sq Ft. / 88.5 Sq M. Inc. Restricted Height



THIRD FLOOR



FOURTH FLOOR

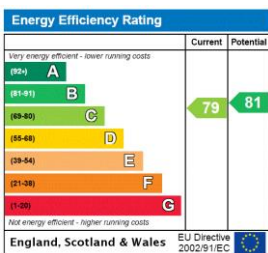


SECOND FLOOR



All measurements have been made in accordance with RICS Code of Measuring Practice which are approximate only and only for illustrative purposes. For the avoidance of doubt, Dowling Jones Design shall not be liable for any reliance on these measurements. © 2019 www.dowlingjones.com 020 7610 9933

This floorplan is for illustration purposes only and is not to scale. The position and size of doors, windows, appliances and other features are approximate.



Notting Hill Sales | 0207 727 3227 | nottinghill@winkworth.co.uk

**Winkworth**

winkworth.co.uk

See things differently

winkworth wishes to inform prospective buyers and tenants that these particulars are a guide and act as information only. All our details are given in good faith and believed to be correct at the time of printing but they don't form part of an offer or contract. No Winkworth employee has authority to make or give any representation or warranty in relation to this property. All fixtures and fittings, whether fitted or not are deemed removable by the vendor unless stated otherwise and room sizes are measured between internal wall surfaces, including furnishings.