



Felsham Road, SW15

£3,500 per month *Unfurnished*



Set across the first and second floors of an attractive period building, this beautifully presented three-bedroom, two-bathroom property combines contemporary style with classic charm

KEY FEATURES

- 3 bedrooms
- 2 bathrooms
- Balcony
- 1,184 sq ft
- Prime West Putney
- Period Maisonette



Putney

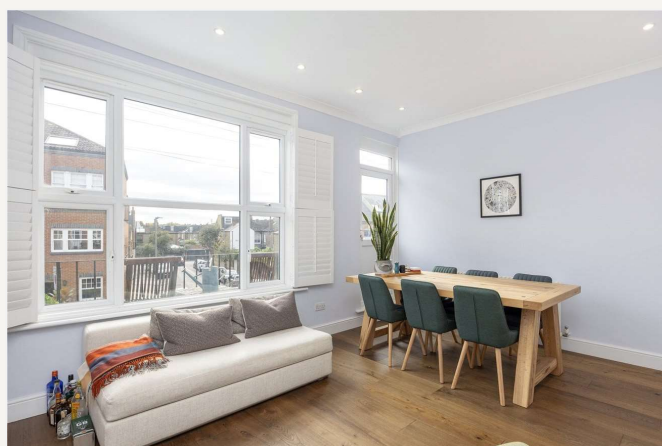
020 8877 1000 | putney@winkworth.co.uk

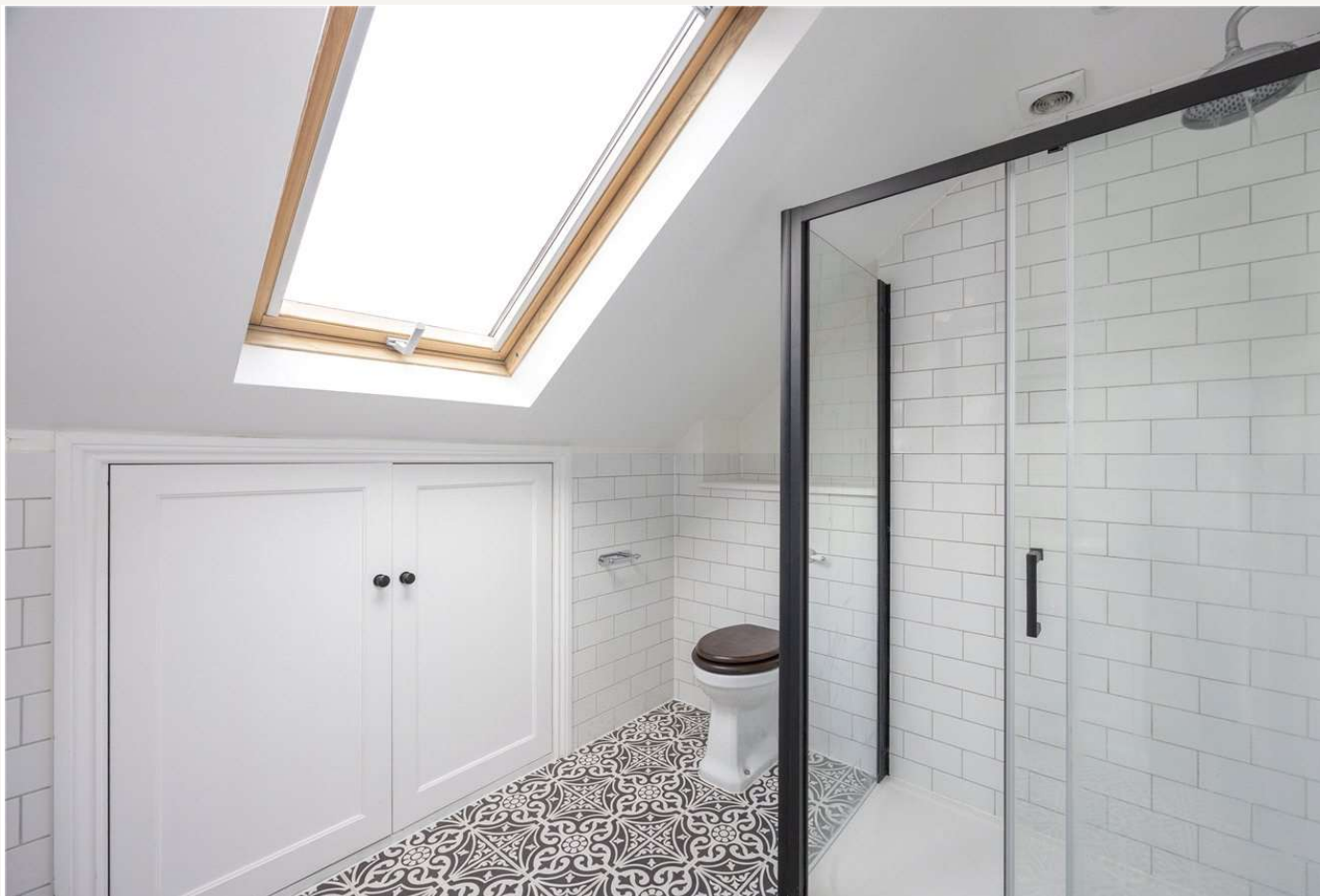
Winkworth

for every step...



The first floor features a warm and inviting reception/dining room with elegant wood flooring, an original fireplace, and bespoke shelving that frames the chimney breast — a perfect blend of character and comfort. The modern, fully fitted kitchen sits to the rear, finished in sleek cabinetry and quality appliances, with a useful utility area adjoining. Two double bedrooms on this level, both with wood flooring, provide excellent versatility for guests, children, or home working. Upstairs, the spacious principal bedroom enjoys soft carpet underfoot, generous eaves storage, and an en-suite bathroom. A further contemporary bathroom serves the additional bedrooms, all finished to a high standard. Throughout, good ceiling heights and natural light enhance the sense of space, while a private balcony at the front provides a charming outdoor spot to enjoy morning coffee or evening sunsets. Felsham Road is ideally located just moments from Putney High Street (approx. 0.2 miles) with its array of shops, cafés, and restaurants. The River Thames and picturesque Putney Embankment are only a short distance away, while excellent transport links are within easy reach, including Putney mainline station (approx. 0.4 miles) and Putney Bridge Underground approx. 0.6 miles).





MATERIAL INFO

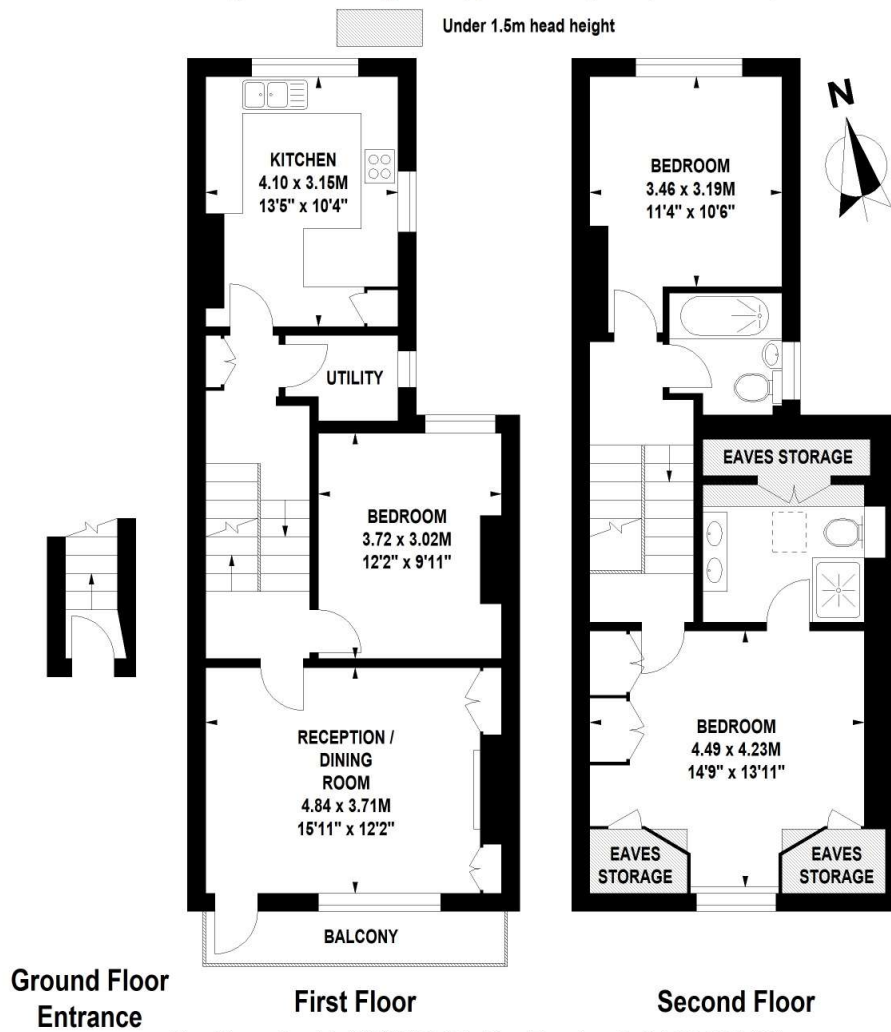
Deposit: 5 weeks' rent

Holding Deposit: 1 week's rent

Council Tax Band: Wandsworth

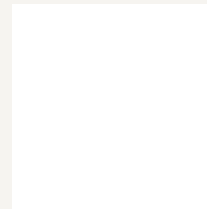
Felsham Road, SW15

Approximate Gross Internal Area 110 sq.m / 1184 sq. ft
Including Eaves Storage of Approximately 5 sq.m / 54 sq. ft



Floor Plan produced for WINKWORTH by Mays Floorplans © . Tel 020 3397 4594
Illustration for identification purposes only, not to scale
All measurements are maximum, and include wardrobes and window bays where applicable

For more information, scan the QR code or visit the link below



<https://www.winkworth.co.uk/rent/property/SOU250235>

Where no figures are shown, we have been unable to ascertain the information. All figures that are shown were correct at the time of printing.

Putney

020 8877 1000 | putney@winkworth.co.uk

Winkworth

for every step...

Winkworth wishes to inform prospective buyers and tenants that these particulars are a guide and act as information only. All our details are given in good faith and believed to be correct at the time of printing but they don't form part of an offer or contract. No Winkworth employee has authority to make or give any representation or warranty in relation to this property. All fixtures and fittings, whether fitted or not are deemed removable by the vendor unless stated otherwise and room sizes are measured between internal wall surfaces, including furnishings.