



ST MARGARETS ROAD, LONDON, NW10
£885,000 FREEHOLD

**A DELIGHTFUL THREE BEDROOM FAMILY HOME LOCATED
MOMENTS FROM KENSAL GREEN AND COLLEGE ROAD.**

Kensal & Queens Park | 0208 960 4947 | kensalrise@winkworth.co.uk





LOCATION:

Ideally located on quiet residential street which is a few moments from Kensal Green Underground (Zone 2, Bakerloo line) & Overground to Euston, allowing for quick and convenient access to Central London and other parts of the city. The no. 18 bus along Harrow Road also takes you to Euston. College Road is highly popular with independent shops, cafes and The Island GastroPub. Ladbrooke Grove and Portobello Road are also a short walk away.





DESCRIPTION:

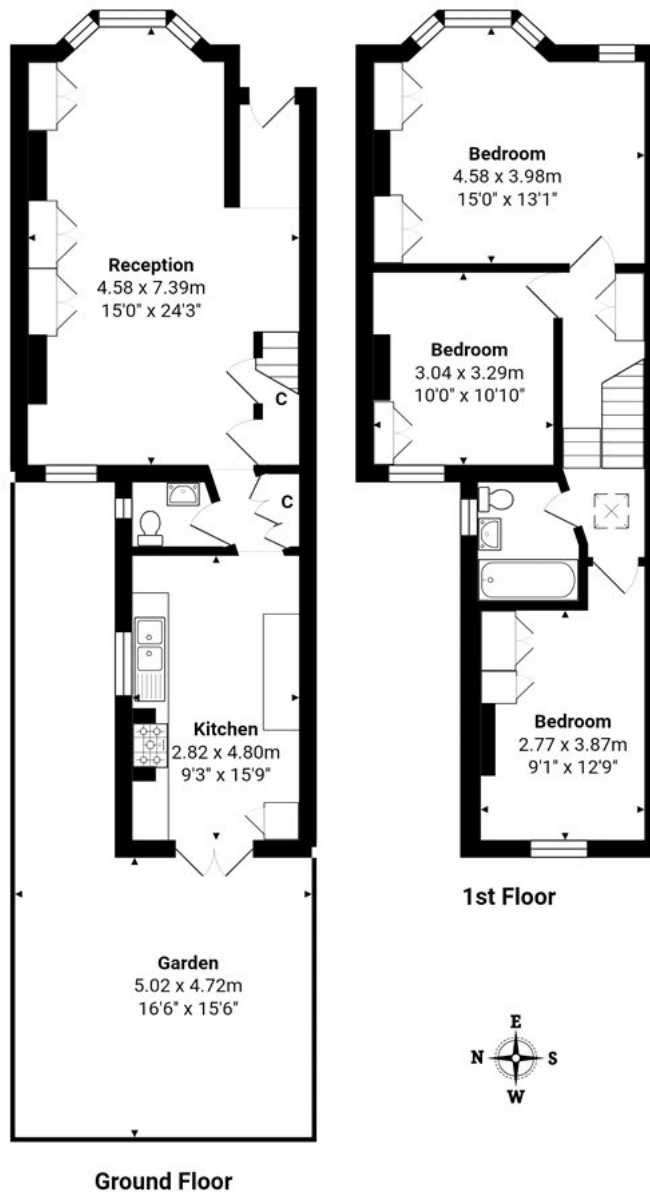
This three bedroom family home offers spacious accommodation spread over two floors and 1,100 sq. ft. of internal living space.

On the first floor there are three bedrooms and a family bathroom.

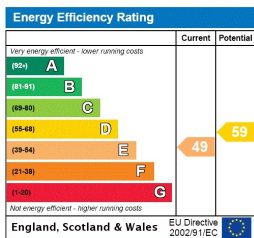
The ground floor comprises a lovely double aspect reception with feature fireplaces and double doors to a suntrap patio garden. The kitchen is fully fitted with dining space, also leading to the garden.

There is scope to extend the property on both the ground floor and in to the loft space (STPP).





This floorplan is for illustration purposes only and is not to scale. The position and size of doors, windows, appliances and other features are approximate.



Kensal & Queens Park | 0208 960 4947 | kensalrise@winkworth.co.uk



winkworth.co.uk

See things differently

winkworth wishes to inform prospective buyers and tenants that these particulars are a guide and act as information only. All our details are given in good faith and believed to be correct at the time of printing but they don't form part of an offer or contract. No winkworth employee has authority to make or give any representation or warranty in relation to this property. All fixtures and fittings, whether fitted or not are deemed removable by the vendor unless stated otherwise and room sizes are measured between internal wall surfaces, including furnishings.