



Stanhope Gardens, South Kensington, London, SW7

£650 per week – Furnished

A nicely furnished two double bedroom flat located on the second floor of this period building.

2 Bedrooms | 1 Reception Room | 1 Bathroom | Second Floor Flat | Balcony | 755 Approx sq ft | EPC: D

APPLICANT FEES MAY BE APPLICABLE

Winkworth

winkworth.co.uk

For every step



DESCRIPTION

A nicely furnished two double bedroom flat located on the second floor of this period building, with private balcony and access to communal gardens (by separate arrangement).

This stylish property benefits from a good sized reception room with separate kitchen, a guest WC, two good sized bedrooms both with built-in storage and a bathroom with shower over bath. The property is available from the end of September on a furnished basis.



ACCOMMODATION

2 Bedrooms, 1 Reception Room,
1 Bathroom, Balcony, Furnished,
755 Approx Sq ft

COUNCIL TAX BAND

Band G



Energy Efficiency Rating		Current	Potential
<i>Very energy efficient - lower running costs</i>			
(92+)	A		
(81-91)	B		
(69-80)	C		75
(55-68)	D	65	
(39-54)	E		
(21-38)	F		
(1-20)	G		
<i>Not energy efficient - higher running costs</i>			
England, Scotland & Wales		EU Directive 2002/91/EC	



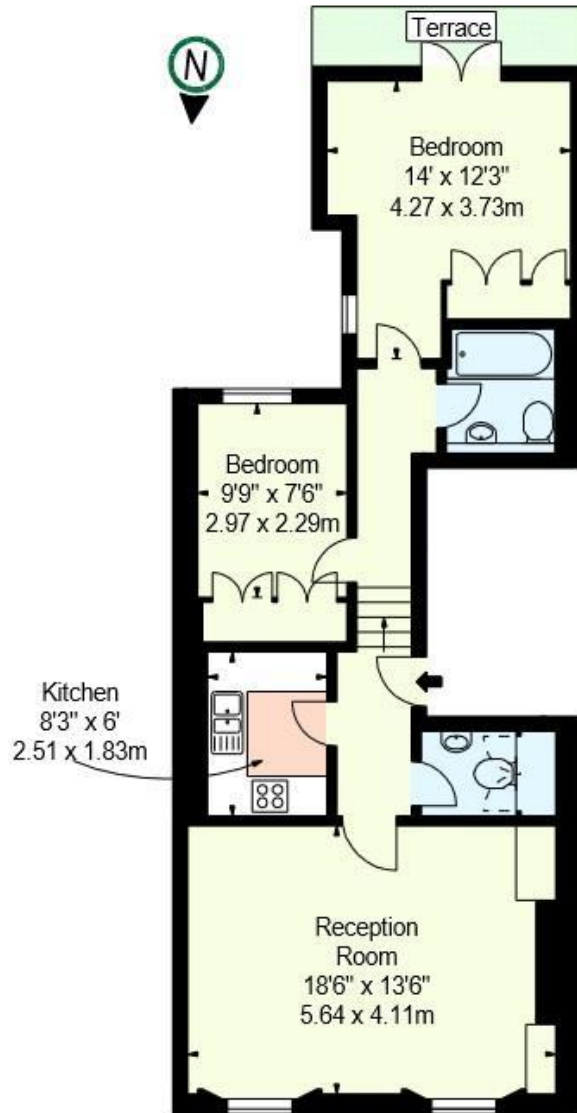
STANHOPE GARDENS SW7

Approx. Gross Internal Area *

755 Ft² - 70.14 M²

(Including Terrace of 41 sqft)

Illustration For Identification Only, Not to Scale
All Calculations include Any/All Areas Under 1.5m Head Height.
* As Defined by RICS - Code of Measuring Practice



Second Floor

BKR

www.bkrfloorplans.co.uk

T: 0845 257 2023

© BKR 2013

This floorplan is for illustration purposes only and is not to scale. The position and size of doors, windows, appliances and other features are approximate.

South Kensington Lettings | 020 7370 6767 | lettings.southken@winkworth.co.uk

winkworth.co.uk

Winkworth

For every step

Winkworth wishes to inform prospective buyers and tenants that these particulars are a guide and act as information only. All our details are given in good faith and believed to be correct at the time of printing but they don't form part of an offer or contract. No Winkworth employee has authority to make or give any representation or warranty in relation to this property. All fixtures and fittings, whether fitted or not are deemed removable by the vendor unless stated otherwise and room sizes are measured between internal wall surfaces, including furnishings.