



BUCHANAN GARDENS, LONDON, NW10
£1,875,000 FREEHOLD

WELCOME TO THIS EXCEPTIONAL FIVE-BEDROOM FAMILY HOME IN THE VIBRANT HEART OF KENSAL RISE, WHERE MODERN LIVING MEETS TIMELESS CHARM. SPANNING OVER 2,000 SQ. FT. AND THOUGHTFULLY EXTENDED ACROSS THREE SPACIOUS FLOORS, THIS PROPERTY IS DESIGNED FOR BOTH COMFORT AND FUNCTIONALITY.

Kensal Rise & Queens Park | 0208 960 4947 | kensalrise@winkworth.co.uk

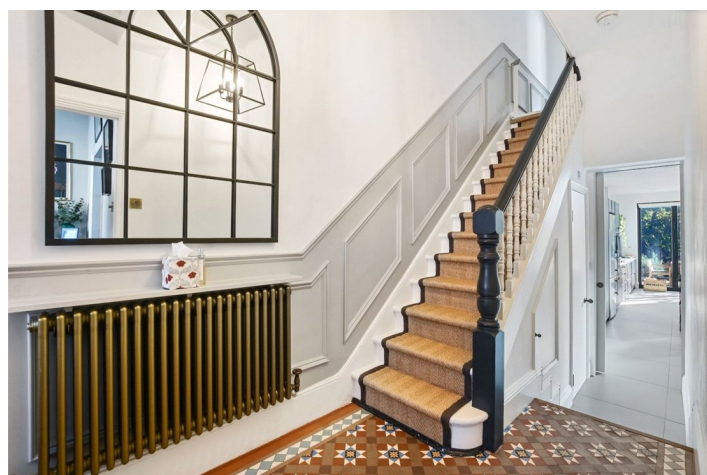
Winkworth



LOCATION: Ideally located on Buchanan Gardens, you'll enjoy easy access to a vibrant array of amenities on College Road, including L'Anglo's Italian Deli, the newly renovated Island Gastro Pub, and the beloved Morty and Bobs café. For outdoor enthusiasts, both Roundwood Park and Queens Park are within walking distance, providing ample green space for relaxation and recreation. Commuting is a breeze with Kensal Green station, just 500 meters away, offering access to the Bakerloo line and London Overground services. Kensal Rise station is also nearby, ensuring you're well-connected to the rest of the city. Plus, this property falls within the catchment area for the highly sought-after Princess Frederica's school.

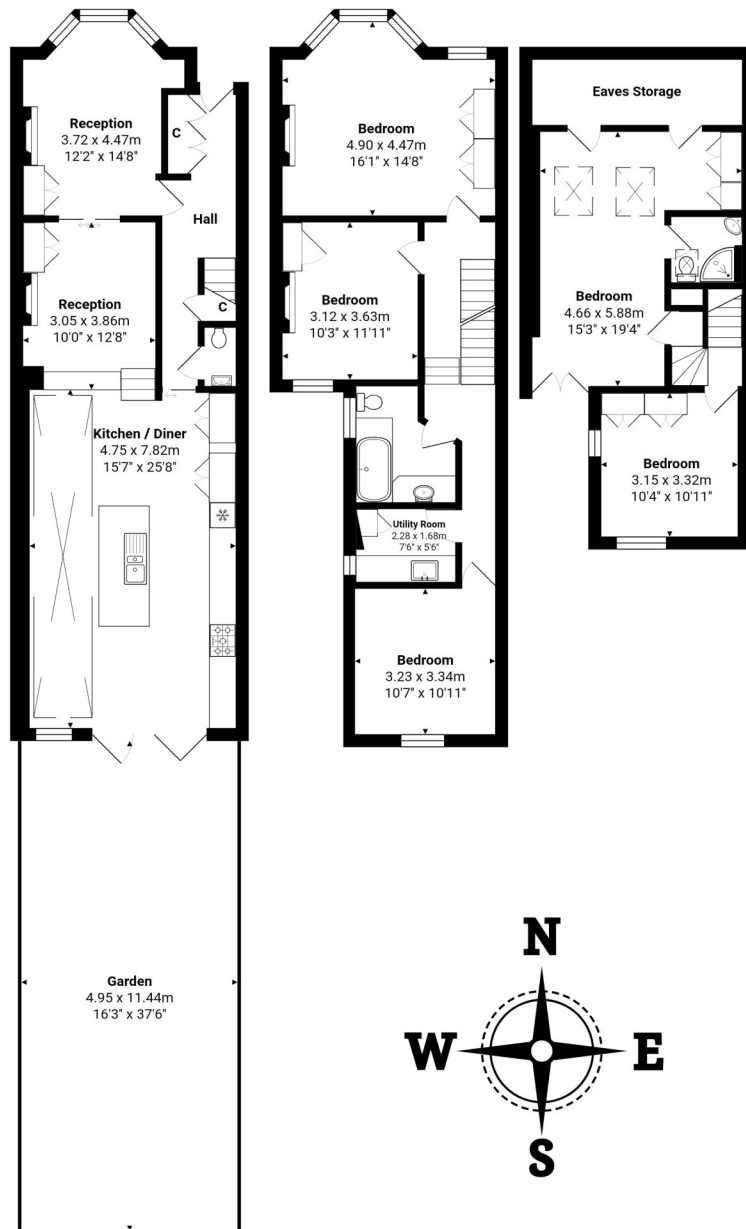


Winkworth



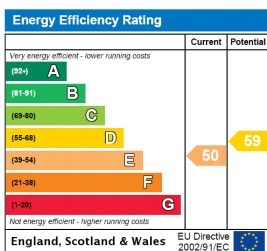
DESCRIPTION: The standout feature is the impressive double loft conversion, which hosts two bright bedrooms—one complete with an en-suite shower room. On the first floor, you'll find three additional well-appointed bedrooms, a stylish family bathroom, and a convenient utility room. The ground floor boasts a lovely kitchen diner, perfect for entertaining, which extends into a side return, leading to a delightful south-facing private garden—a serene retreat for family gatherings or quiet moments outdoors. The inviting front of the home features a double-aspect reception room, a downstairs W.C., and a beautifully tiled Victorian-style entrance hall, setting the tone for this lovely residence. Meticulously maintained and in excellent condition, this home has seen recent upgrades, including two new flat roofs at the rear, reflecting the care and attention of its current owners.

Winkworth



Total Area: 186.0 m² ... 2002 ft² (excluding garden)
All measurements are approximate and for display purposes only

This floorplan is for illustration purposes only and is not to scale. The position and size of doors, windows, appliances and other features are approximate.



Kensal Rise & Queens Park | 0208 960 4947 | kensalrise@winkworth.co.uk

Winkworth

winkworth.co.uk

See things differently

winkworth wishes to inform prospective buyers and tenants that these particulars are a guide and act as information only. All our details are given in good faith and believed to be correct at the time of printing but they don't form part of an offer or contract. No winkworth employee has authority to make or give any representation or warranty in relation to this property. All fixtures and fittings, whether fitted or not are deemed removable by the vendor unless stated otherwise and room sizes are measured between internal wall surfaces, including furnishings.