



## Mayow Road, SE23

£350,000 *To be advised*



This charming first-floor flat features a generously sized bedroom, private balcony and stylish open-plan kitchen/reception room. With a contemporary kitchen, sleek bathroom, and built-in storage, the property is bright and thoughtfully arranged. Ideally located near local amenities, transport links and green spaces



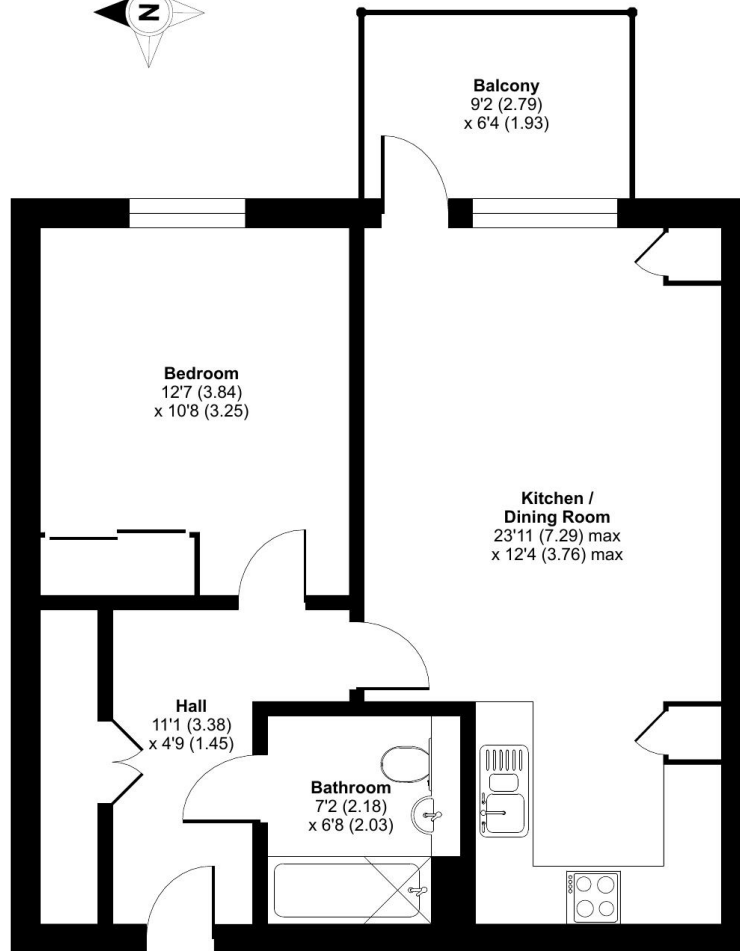
## Forest Hill

| [foresthill@winkworth.co.uk](mailto:foresthill@winkworth.co.uk)

## Mayow Road, London, SE23

Approximate Area = 564 sq ft / 52.4 sq m

For identification only - Not to scale



FIRST FLOOR

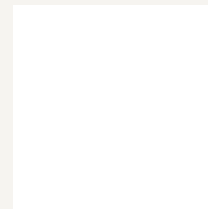


Floor plan produced in accordance with RICS Property Measurement Standards incorporating International Property Measurement Standards (IPMS2 Residential). © n/checon 2026. Produced for Winkworth Forest Hill and New Cross. REF: 1403818

### MATERIAL INFO

For more information, scan the QR code or visit the link below

**Tenure:** Leasehold



<https://www.winkworth.co.uk/sale/property/FHL260008>

Where no figures are shown, we have been unable to ascertain the information. All figures that are shown were correct at the time of printing.

**Forest Hill**

| [foresthill@winkworth.co.uk](mailto:foresthill@winkworth.co.uk)