



PARK MANSIONS, LONDON, SW1X
£895 PER WEEK FURNISHED

Winkworth



PARK MANSIONS, LONDON, SW1X

Located on the sixth floor (lift) of this beautiful purpose built red-brick Victorian mansion building in the heart of Knightsbridge, this recently refurbished one bedroom flat offers well-proportioned accommodation with high ceilings throughout.

Entered via a smart communal entrance, the apartment enjoys plenty of storage and a well presented kitchen and bathroom. Park Mansions is moments from the green and open spaces of Hyde Park, with Harrods and the world class facilities of Sloane Street within easy walking distance.

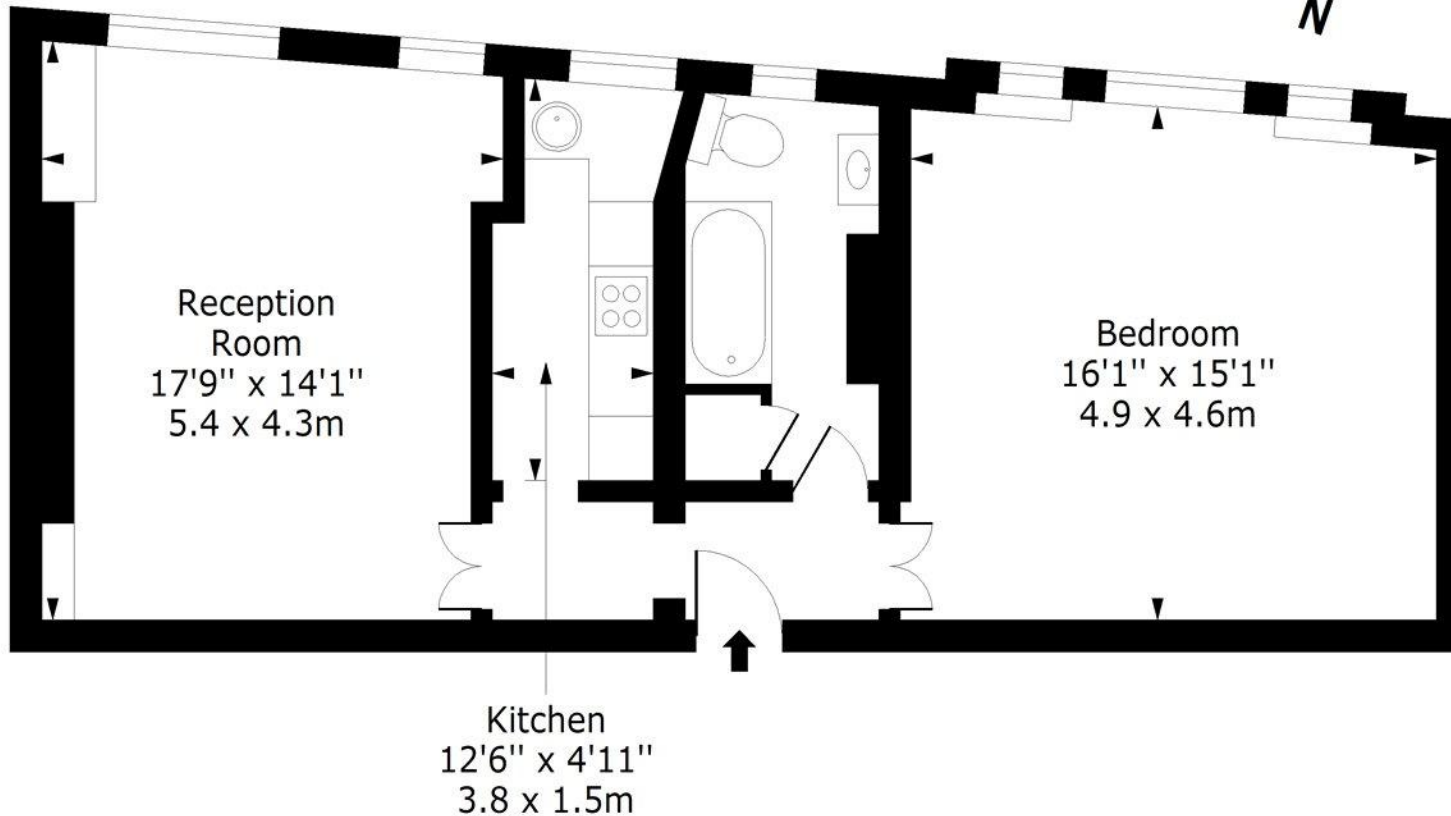
Accommodation comprises: Smart communal entrance, 24 hour Porter, Lift, Entrance hall, Reception room with dining area, Kitchen, Double bedroom, Bathroom and qualification for City of Westminster parking permits.





Park Mansions, SW1X

Approx. Gross Internal Area 693 Sq Ft - 64.38 Sq M



Sixth Floor

Floor Area 693 Sq Ft - 64.38 Sq M

For Illustration Purposes Only - Not To Scale

www.lpaplus.com

Score	Energy rating	Current	Potential
92+	A		
81-91	B		
69-80	C		76 C
55-68	D	67 D	
39-54	E		
21-38	F		
1-20	G		

Knightsbridge & Chelsea | 0207 589 6616 | knightsbridge@winkworth.co.uk

winkworth.co.uk

Winkworth wishes to inform prospective buyers and tenants that these particulars are a guide and act as information only. All our details are given in good faith and believed to be correct at the time of printing but they don't form part of an offer or contract. No Winkworth employee has authority to make or give any representation or warranty in relation to this property. All fixtures and fittings, whether fitted or not are deemed removable by the vendor unless stated otherwise and room sizes are measured between internal wall surfaces, including furnishings.

Winkworth