



Wrentham Avenue, NW10

£3,500 per month *Part Furnished*



Spacious split level, three bedroom, two bathroom first floor apartment.

KEY FEATURES

- Split Level Apartment
- Three Large Double Bedrooms
- Two Bathrooms
- Open-Plan Kitchen Reception Room
- Part Furnished
- Brent Council Tax Band - E



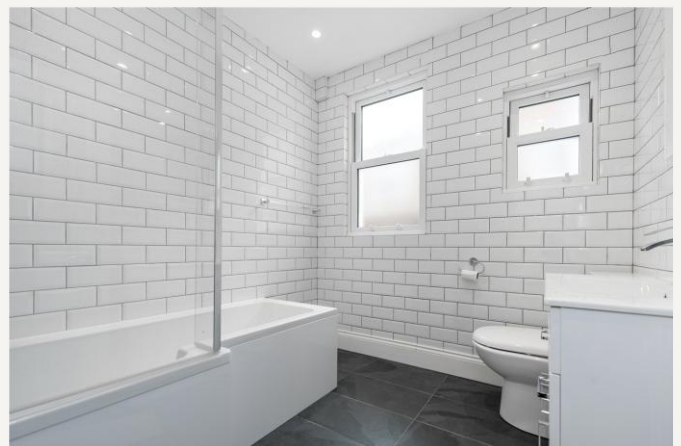
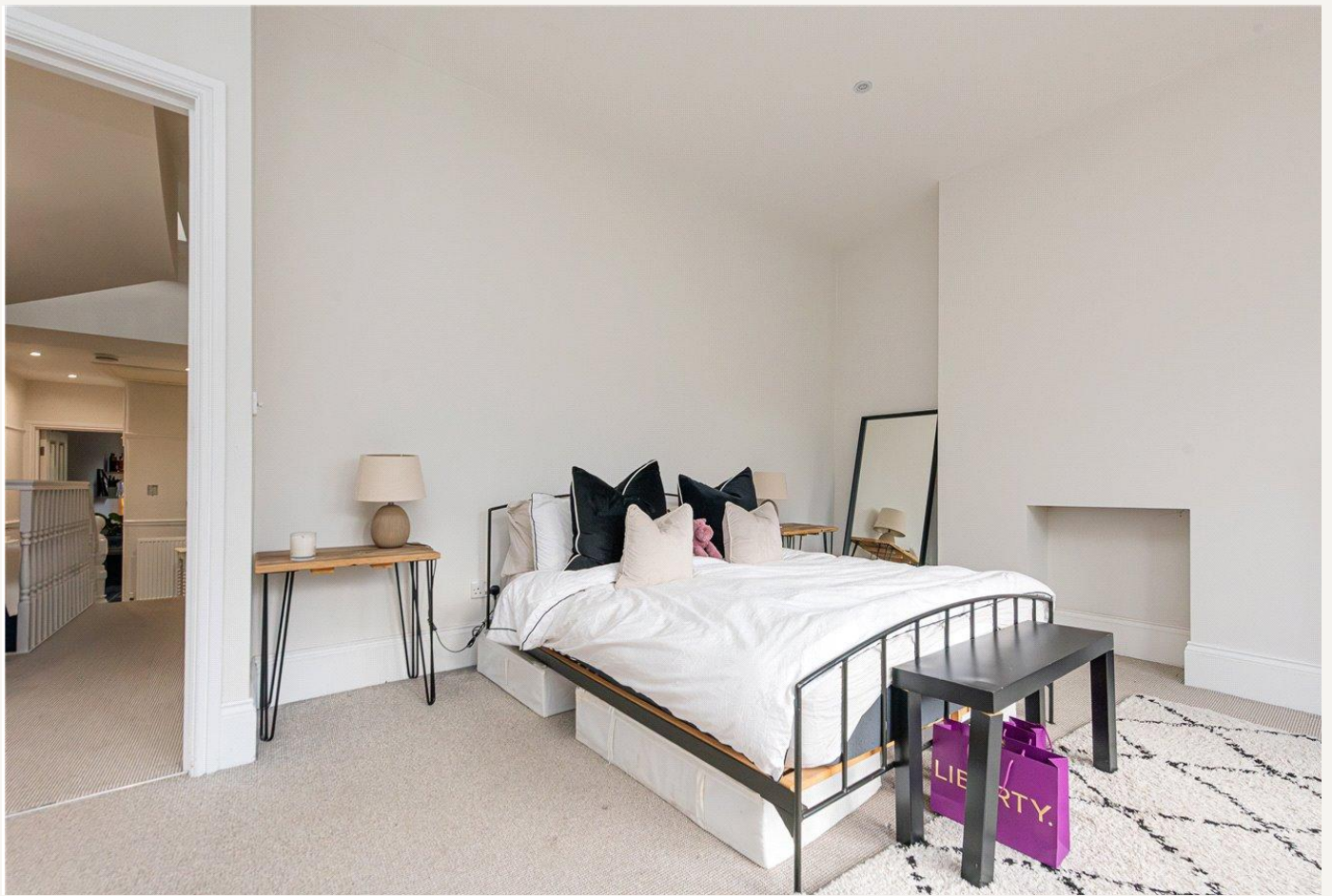
Kensal Rise & Queens Park

0208 960 4947 | kensalrise@winkworth.co.uk

Winkworth

for every step...



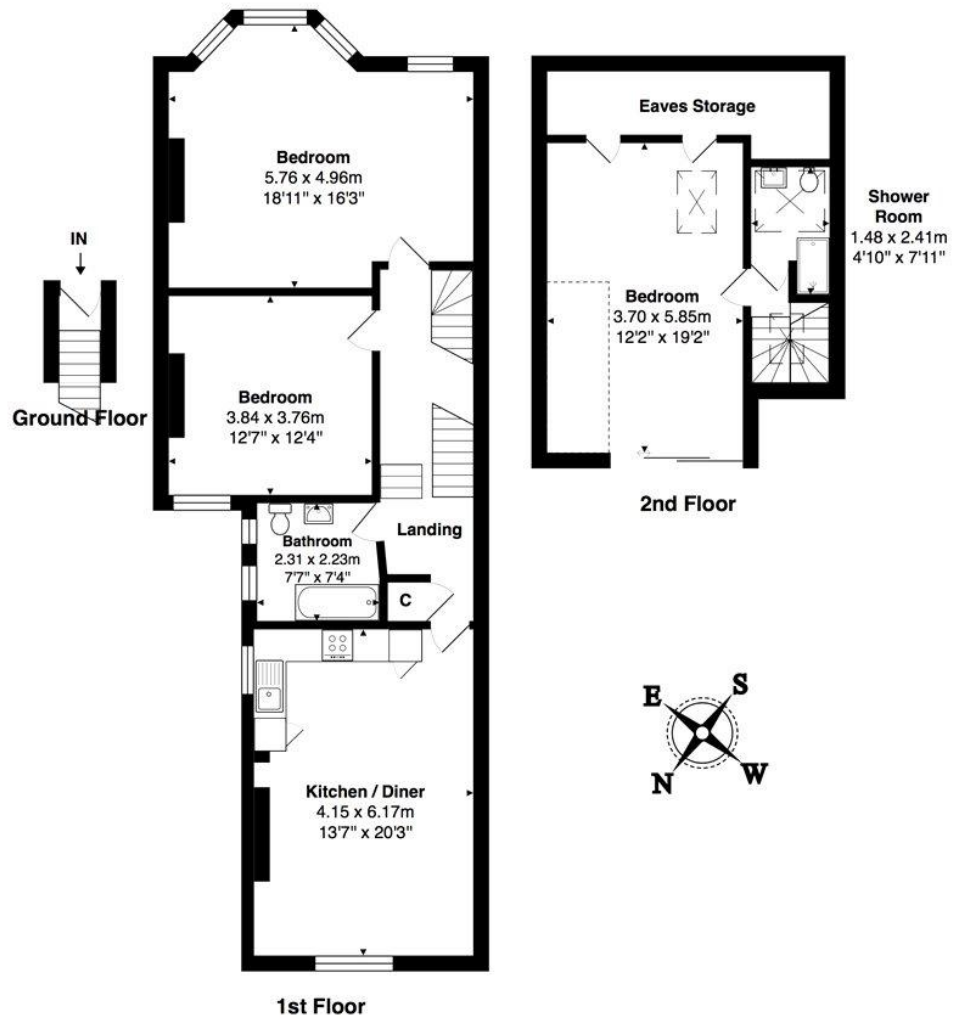


MATERIAL INFO

Deposit: 5 weeks rent

Holding Deposit: 1 weeks rent

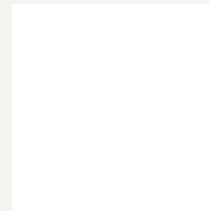
Council Tax Band: E



Total Area: 114.6 m² ... 1234 ft² (excluding eaves storage)
All measurements are approximate and for display purposes only

| Energy Efficiency Rating | | |
|---|-------------------------|-----------|
| | Current | Potential |
| Very energy efficient - lower running costs | | |
| (92+) A | | |
| (81-91) B | | |
| (69-80) C | 71 | 71 |
| (55-68) D | | |
| (39-54) E | | |
| (21-38) F | | |
| (1-20) G | | |
| Not energy efficient - higher running costs | | |
| England, Scotland & Wales | EU Directive 2002/91/EC | |

For more information, scan the QR code or visit the link below



<https://www.winkworth.co.uk/rent/property/KQP170234>

Where no figures are shown, we have been unable to ascertain the information. All figures that are shown were correct at the time of printing.

Kensal Rise & Queens Park

0208 960 4947 | kensalrise@winkworth.co.uk

Winkworth

for every step...

Winkworth wishes to inform prospective buyers and tenants that these particulars are a guide and act as information only. All our details are given in good faith and believed to be correct at the time of printing but they don't form part of an offer or contract. No Winkworth employee has authority to make or give any representation or warranty in relation to this property. All fixtures and fittings, whether fitted or not are deemed removable by the vendor unless stated otherwise and room sizes are measured between internal wall surfaces, including furnishings.