



Winkworth

for every step...

## Haywood Court, Reading, Berkshire, RG1 3QF

£1,450 per month *Part Furnished*



Two bedroom ground floor apartment situated to the east of Reading a short distance from Reading town centre, Thames Valley Park and with easy access to the M4 via the A3290. The property comprises spacious reception room, separate kitchen, one double bedroom, second smaller bedroom currently set up as a study and a modern shower room. Further benefits include use of the communal gardens and residents permit parking. Available now. Part-furnished.

### KEY FEATURES

- Two bedroom apartment
- Located in East Reading
- Residents parking
- Communal gardens
- Council tax band B
- Available now
- Part-furnished



Reading

0118 4022 300 | [reading@winkworth.co.uk](mailto:reading@winkworth.co.uk)

Winkworth

for every step...





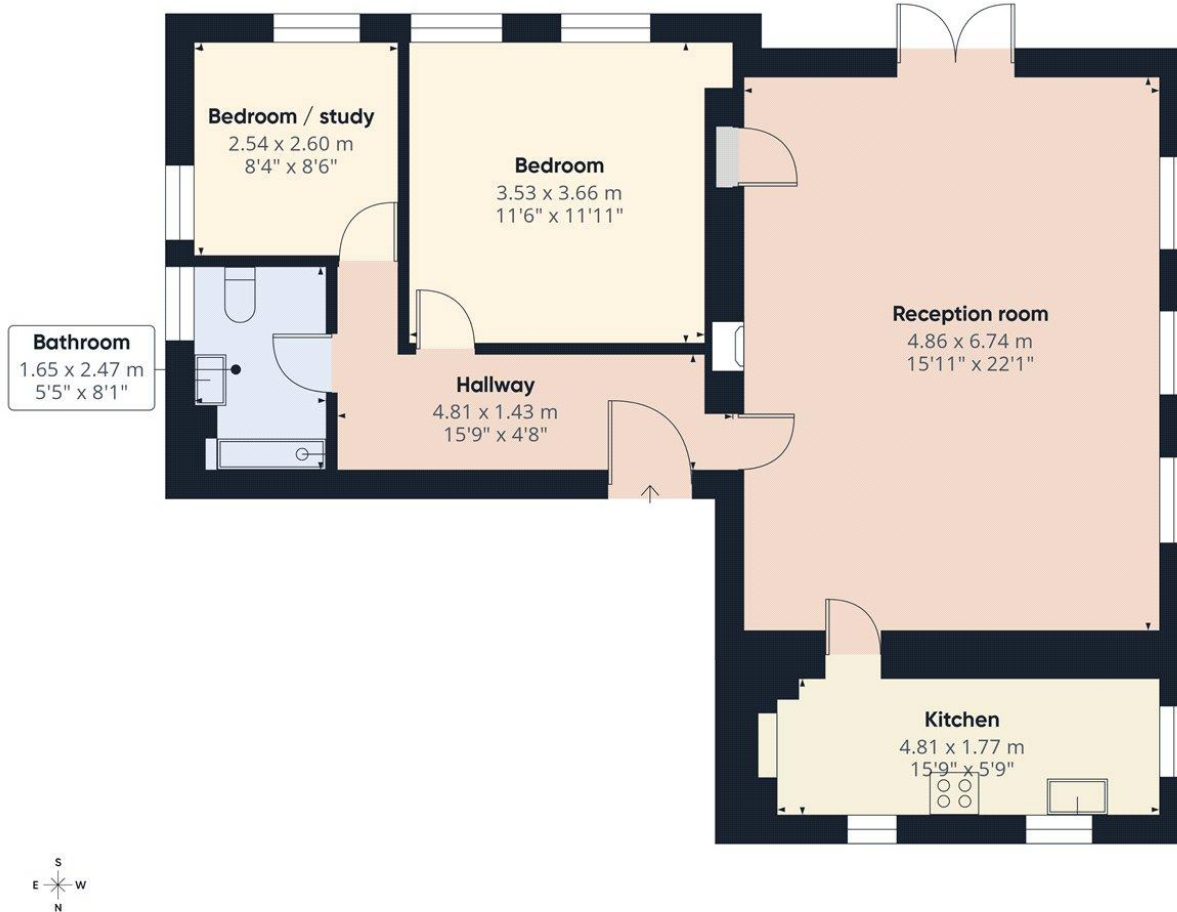




## MATERIAL INFO

**Deposit:** £1,673.08  
**Holding Deposit:** £334.61  
**Council Tax Band:** B  
**EPC rating:** D

**Winkworth**



**Approximate total area<sup>(1)</sup>**  
74.2 m<sup>2</sup>  
799 ft<sup>2</sup>

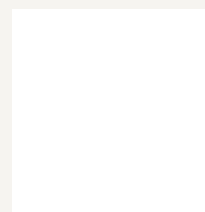
(1) Excluding balconies and terraces

Calculations reference the RICS IPMS 3C standard. Measurements are approximate and not to scale. This floor plan is intended for illustration only.

GIRAFFE360

Score	Energy rating	Current	Potential
92+	A		
81-91	B		
69-80	C		
55-68	D	65 D	77 C
39-54	E		
21-38	F		
1-20	G		

For more information, scan the QR code or visit the link below



<https://www.winkworth.co.uk/rent/property/REA251182>

Where no figures are shown, we have been unable to ascertain the information. All figures that are shown were correct at the time of printing.

**Reading**

0118 4022 300 | [reading@winkworth.co.uk](mailto:reading@winkworth.co.uk)

**Winkworth**

for every step...

Winkworth wishes to inform prospective buyers and tenants that these particulars are a guide and act as information only. All our details are given in good faith and believed to be correct at the time of printing but they don't form part of an offer or contract. No Winkworth employee has authority to make or give any representation or warranty in relation to this property. All fixtures and fittings, whether fitted or not are deemed removable by the vendor unless stated otherwise and room sizes are measured between internal wall surfaces, including furnishings.