



BROADSIDE HOUSE, DEPTFORD, LONDON, SE8
£645,000 LEASEHOLD

A STUNNING AND BRIGHT THREE BEDROOM PENTHOUSE LOCATED JUST WEST OF GREENWICH TOWN CENTRE, FEATURING TWO BEAUTIFUL PRIVATE ROOF TERRACES AND MEASURING CIRCA 935 SQ FT. EWS1 COMPLIANT!

Greenwich | 02030533033 | greenwich@winkworth.co.uk

Winkworth

winkworth.co.uk

See things differently



DESCRIPTION:

A stunning and bright three bedroom Penthouse located just west of Greenwich town centre, featuring two beautiful private roof terraces and measuring circa 935 sq ft. EWS1 compliant!

Found on the 5th floor (with lift), the property briefly comprises of a lovely 23ft Kitchen living room that opens onto the large rear roof terrace that has views into Greenwich. There are three good sized bedrooms and two bathrooms. The master bedroom also has a walk in wardrobe and then access onto the front terrace that has great views into London. Added benefits include a superb communal roof terrace, concierge, and a gymnasium.

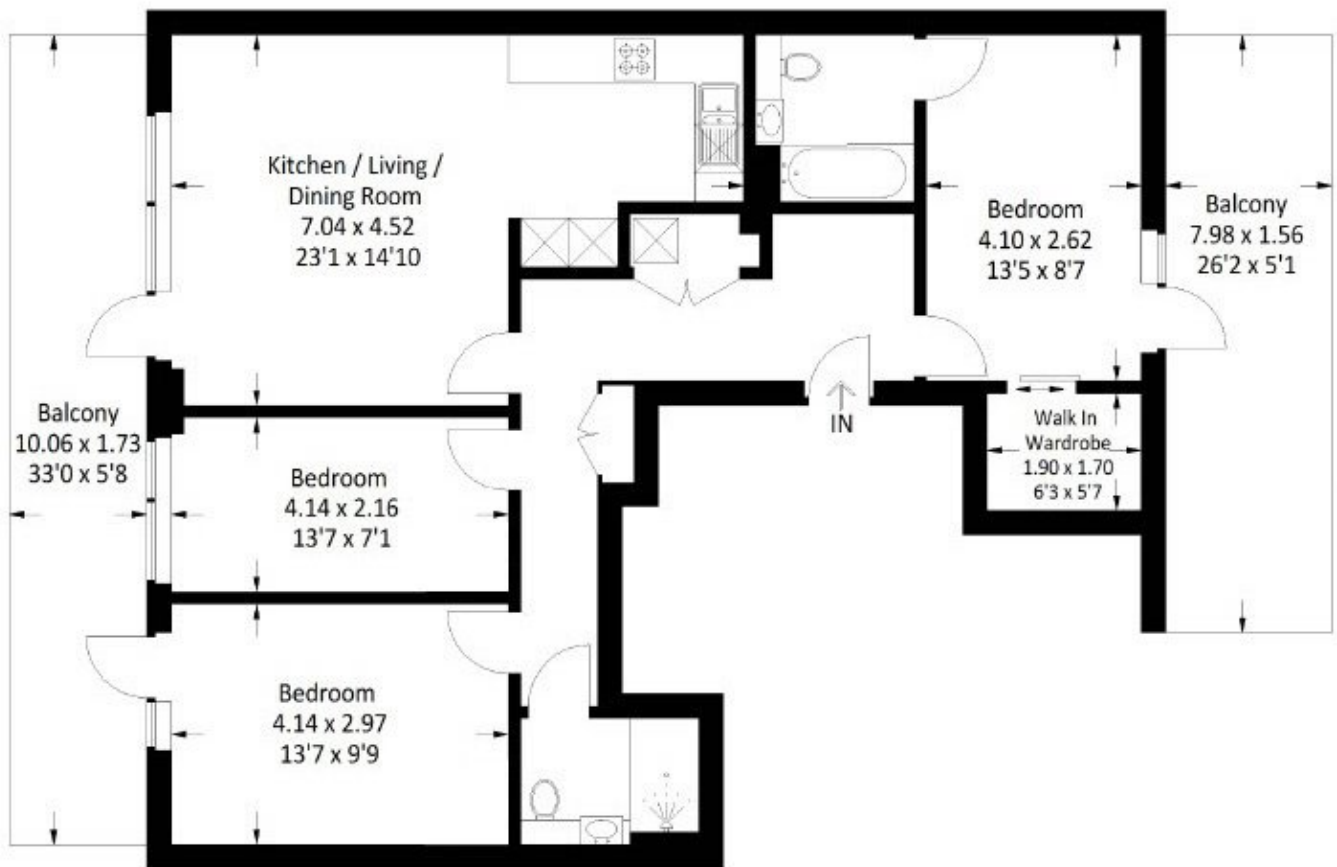
Kent Wharf is a new development located just off Creekside. As mentioned, it is just a short walk to Greenwich town centre, which offers a fantastic array of shops and restaurants, along with Greenwich market and The Royal Park. Mainline rail, riverboat service and DLR are also close by. Your earliest viewing is highly recommended.

AT A GLANCE

- stunning penthouse
- three bedrooms
- circa 935 sq ft
- two bathrooms
- two private terraces
- 5th floor with lift
- Kent Wharf development
- communal roof terrace
- communal gymnasium
- views over London







Approximate Gross Internal Area = 86.9 sq m / 935 sq ft

This floorplan is for illustration purposes only and is not to scale. The position and size of doors, windows, appliances and other features are approximate.

Energy Efficiency Rating		
	Current	Potential
Very energy efficient - lower running costs		
A (92-100)		
B (81-91)	85	85
C (69-80)		
D (55-68)		
E (39-54)		
F (21-38)		
G (1-20)		
Not energy efficient - higher running costs		
England, Scotland & Wales EU Directive 2002/91/EC		

Greenwich | 02030533033 | greenwich@winkworth.co.uk

Winkworth

winkworth.co.uk

See things differently

Winkworth wishes to inform prospective buyers and tenants that these particulars are a guide and act as information only. All our details are given in good faith and believed to be correct at the time of printing but they don't form part of an offer or contract. No Winkworth employee has authority to make or give any representation or warranty in relation to this property. All fixtures and fittings, whether fitted or not are deemed removable by the vendor unless stated otherwise and room sizes are measured between internal wall surfaces, including furnishings.