



## Kensington Gardens Square, W2

£650,000 *Share of Freehold*

1  1  1 

A very bright, top floor, one bedroom apartment situated on this wonderful Communal Garden Square.

### KEY FEATURES

- Share of Freehold
- Access to Communal Gardens
- Bright and Spacious Layout
- 635 Sq.ft
- Close to Underground Stations



Notting Hill Sales

0207 727 3227 | nottinghill@winkworth.co.uk

**Winkworth**

for every step...



## DESCRIPTION

Situated on the third and fourth floors of this Grade II Listed building this bright apartment extends to 635sq.ft. The accommodation comprises, reception room, separate kitchen, large bedroom, and a bathroom. Being top floor there are wonderful views from all windows while the property benefits from access to the Kensington Garden Square Communal Garden.

## LOCATION

Kensington Gardens Square is an impressive garden square, running south from Westbourne Grove with its many shops and restaurants, and just to the east of Queensway with its many amenities and transport links and current extensive regeneration program.

## MATERIAL INFO

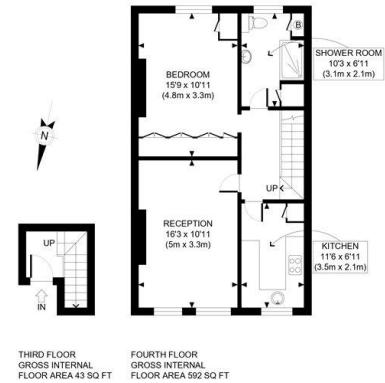
**Tenure:** Share of Freehold

**Service Charge:** £2,342 per annum

**Council Tax Band:** D (Westminster)

**EPC rating:** To be confirmed

**Is the property listed:** 1



**Winkworth**

This plan is for illustrative purposes only and should be used as such by any prospective client. Whilst every attempt has been made to ensure the accuracy of the Floor Plan contained here, measurements of the doors, windows, rooms and any other items are approximate and no responsibility is taken for any errors, omissions, or misstatement. The services, systems and appliances shown have not been tested and no guarantee as to the operability or efficiency can be given.

**PROPERTY PHOTO PLANS**



For more information, scan the QR code or visit the link below



<https://www.winkworth.co.uk/sale/property/NHS250228>

Where no figures are shown, we have been unable to ascertain the information. All figures that are shown were correct at the time of printing.

**Notting Hill Sales**

0207 727 3227 | [nottinghill@winkworth.co.uk](mailto:nottinghill@winkworth.co.uk)

**Winkworth**

for every step...

Winkworth wishes to inform prospective buyers and tenants that these particulars are a guide and act as information only. All our details are given in good faith and believed to be correct at the time of printing but they don't form part of an offer or contract. No Winkworth employee has authority to make or give any representation or warranty in relation to this property. All fixtures and fittings, whether fitted or not are deemed removable by the vendor unless stated otherwise and room sizes are measured between internal wall surfaces, including furnishings.