

BELGRAVE ROAD, SW1V

£599,950

LEASEHOLD

At a glance...

- One Double Bedroom
- Separate Storage Room
- Excellent Condition
- Second Floor with Lift
- Super Bright
- Council Tax Band: D

Winkworth

for every step...



Score	Energy rating	Current	Potential
92+	A		
81-91	B		
69-80	C		
55-68	D		63 D
39-54	E	46 E	
21-38	F		
1-20	G		

BELGRAVE ROAD, SW1V

£599,950

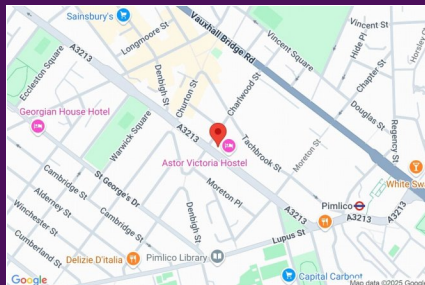
LEASEHOLD

On the second floor (with lift) of this well run, privately-owned purpose-built building in the heart of Pimlico, this incredible one bedroom flat is located in a lovely corner position and with large windows meaning it benefits from a huge amount of natural light.

Comprising a fantastic reception room which incorporates an extra space which can be used as a study but also has a clever pull-down bed for guests, a modern kitchen, smart bathroom and good-size bedroom with built-in storage.

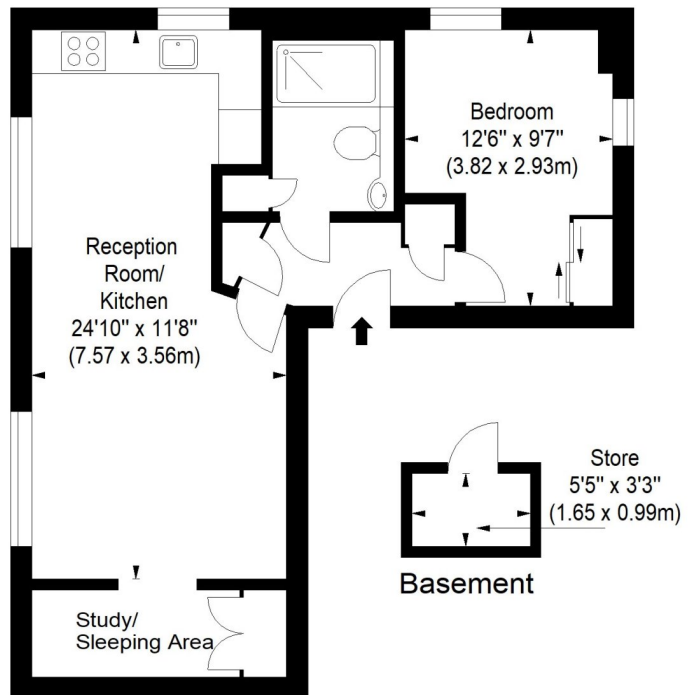
The flat features atmospheric lighting solutions, attractive wooden floors and an extra storage room of just over 20 sq ft.

This apartment would make an ideal, low maintenance London base or luxurious 1st home given its incredible location a short walk from Victoria Station and all the amenities of Pimlico, Belgravia and Victoria Street.



Egerton House SW1

Approx. Gross Internal Area 527 Sq Ft - 48.96 Sq M
Approx. Gross Store Area 21 Sq Ft - 1.95 Sq M
Approx. Total Area 548 Sq Ft - 50.91 Sq M



Second Floor

Pimlico & Westminster

020 7828 1786

pimlico@winkworth.co.uk

winkworth.co.uk/pimlico-westminster

Winkworth

for every step...

Winkworth wishes to inform prospective buyers and tenants that these particulars are a guide and act as information only. All our details are given in good faith and believed to be correct at the time of printing but they don't form part of an offer or contract. No Winkworth employee has authority to make or give any representation or warranty in relation to this property. All fixtures and fittings, whether fitted or not are deemed removable by the vendor unless stated otherwise and room sizes are measured between internal wall surfaces, including furnishings.