



MORTON CLOSE, LONDON, UNITED KINGDOM, E1
£325,000 LEASEHOLD

LARGE 1 BED WITHIN GATED DEVELOPMENT IN SHADWELL

Shoreditch | 020 7749 7650 | shoreditch@winkworth.co.uk

Winkworth

winkworth.co.uk

See things differently



DESCRIPTION:

Located in a peaceful gated development just moments from the vibrant heart of East London, this well-presented one-bedroom flat offers a superb blend of comfort, style, and location. This property is ideal for first-time buyers, young professionals, or buy-to-let investors seeking a low-maintenance home in a high-demand area.

The modern kitchen is well-equipped with a range of fitted units, integrated appliances, and generous counter space. It flows seamlessly from the living area, creating a sociable environment that's perfect for modern lifestyles.

The bedroom is a good-sized double with ample space for wardrobes and south facing views. There's plenty of room for additional furniture, and it could easily accommodate a desk for those working from home. The bathroom is modern, with full tiling, a full-sized bath with overhead shower.

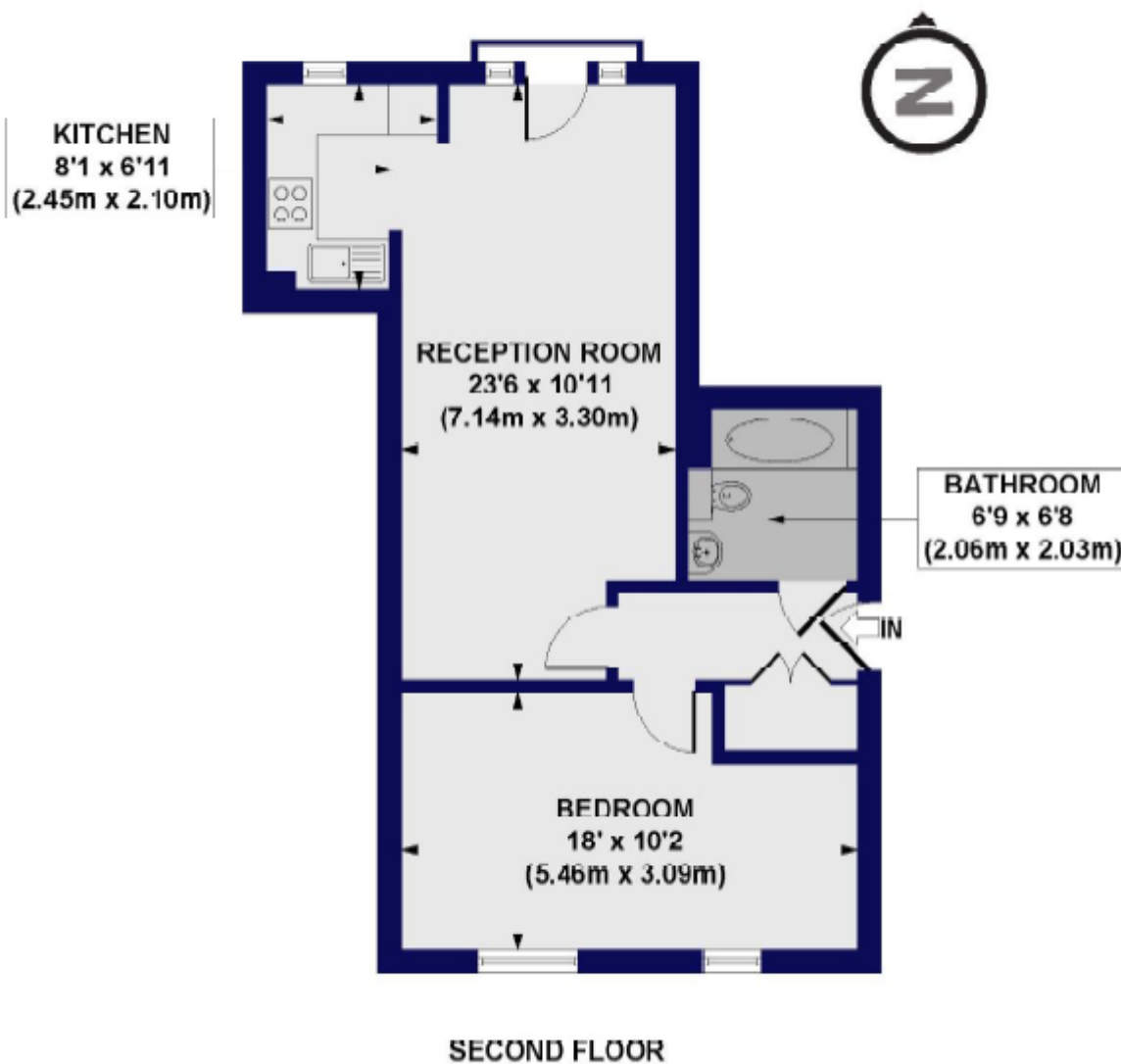
Externally, the development offers well-kept communal areas, secure entry access, and residents' parking. There are also bike storage options available.

Morton Close is ideally positioned for commuters. Stepney Green Underground Station (District and Hammersmith & City lines) is just a short walk away, while Whitechapel Station—with access to the new Elizabeth Line—is also within easy reach, dramatically cutting travel times across London, including to Canary Wharf, Liverpool Street, Farringdon, and even Heathrow Airport.

Winkworth



Winkworth



This floorplan is for illustration purposes only and is not to scale. The position and size of doors, windows, appliances and other features are approximate.

Score	Energy rating	Current	Potential
92+	A		
81-91	B		
69-80	C	73 C	84 B
55-68	D		
39-54	E		
21-38	F		
1-20	G		

Shoreditch | 020 7749 7650 | shoreditch@winkworth.co.uk

Winkworth

winkworth.co.uk

See things differently

Winkworth wishes to inform prospective buyers and tenants that these particulars are a guide and act as information only. All our details are given in good faith and believed to be correct at the time of printing but they don't form part of an offer or contract. No Winkworth employee has authority to make or give any representation or warranty in relation to this property. All fixtures and fittings, whether fitted or not are deemed removable by the vendor unless stated otherwise and room sizes are measured between internal wall surfaces, including furnishings.