



Worcester Close, SE20

£400,000 *Leasehold*



Located in the ever-popular Worcester Close, this beautifully presented two double bedrooms, two-bathroom apartment offers stylish and contemporary living within a well-maintained modern development.

The property is finished to a high standard throughout and comprises a welcoming entrance hallway with excellent built-in storage, a spacious open-plan kitchen and reception room providing ample space for dining and entertaining, and direct access onto a private balcony.

KEY FEATURES

- Leasehold
- Two Double Bedrooms
- Two Bathrooms
- Spacious open plan Kitchen & Reception
- Two Balconies
- Underground Parking Space
- Great Location



Crystal Palace

02038693222 | crystalpalace@winkworth.co.uk

Winkworth

for every step...



The principal bedroom benefits from fitted wardrobes, a modern en-suite shower room, and direct access to a second private balcony. A further generous double bedroom and a sleek family bathroom complete the accommodation.

Additional features include lift access, well-maintained communal gardens, and one allocated private underground parking space.

Ideally positioned for excellent transport links, the property is conveniently located for both Crystal Palace and Anerley stations, providing fast and frequent services into Central London. The green open spaces of Crystal Palace Park are just a short walk away, while the vibrant Crystal Palace Triangle offers an excellent selection of independent shops, cafés, bars, and restaurants.

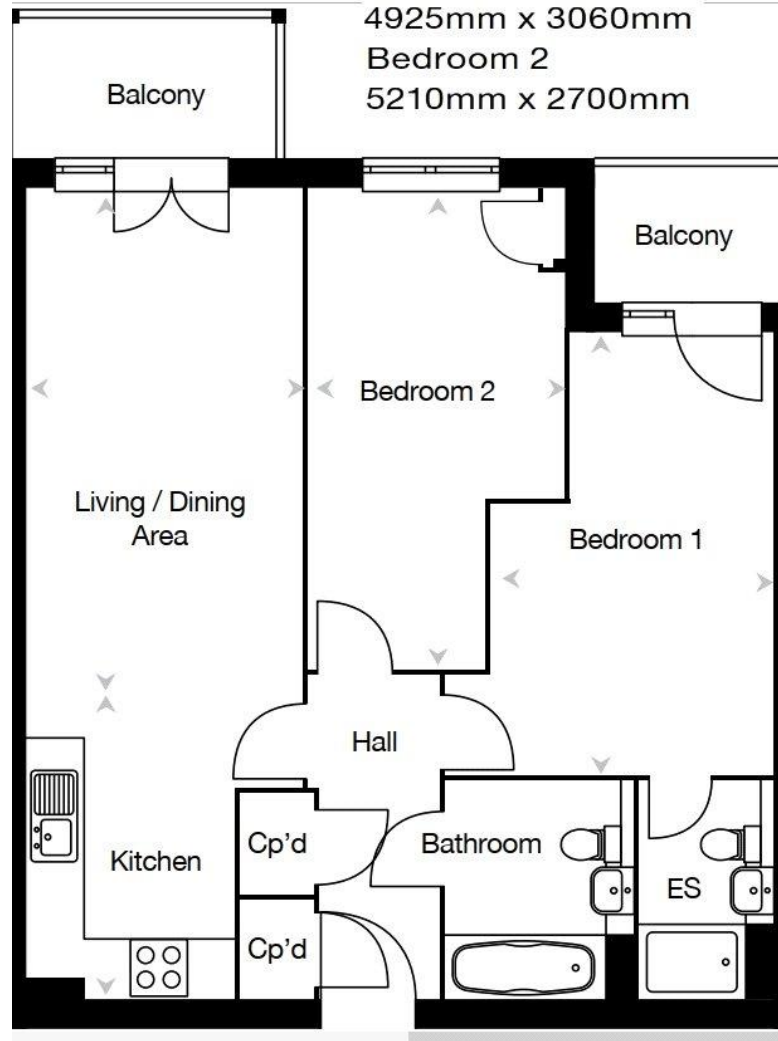




MATERIAL INFO

Tenure: Leasehold
Term: 113 years
Service Charge: £1900 per annum
Ground Rent: £ 365 Annually (subject to increase)
Council Tax Band: C
EPC rating: B

Living/Dining Area
5535mm x 2900mm
Kitchen
3250mm x 2135mm
Bedroom 1
4925mm x 3060mm
Bedroom 2
5210mm x 2700mm



Score	Energy rating	Current	Potential
92+	A		
81-91	B	84 B	84 B
69-80	C		
55-68	D		
39-54	E		
21-38	F		
1-20	G		

Where no figures are shown, we have been unable to ascertain the information. All figures that are shown were correct at the time of printing.

Crystal Palace

02038693222 | crystalpalace@winkworth.co.uk

Winkworth

for every step...

Winkworth wishes to inform prospective buyers and tenants that these particulars are a guide and act as information only. All our details are given in good faith and believed to be correct at the time of printing but they don't form part of an offer or contract. No Winkworth employee has authority to make or give any representation or warranty in relation to this property. All fixtures and fittings, whether fitted or not are deemed removable by the vendor unless stated otherwise and room sizes are measured between internal wall surfaces, including furnishings.