



SELLINCOURT ROAD, SW17
£725,000 SHARE OF FREEHOLD

AN EXCEPTIONAL AND EXTENSIVELY RENOVATED THREE-BEDROOM PERIOD MAISONETTE

Tooting | 020 8767 5221 | tooting@winkworth.co.uk

Winkworth

for every step...

winkworth.co.uk



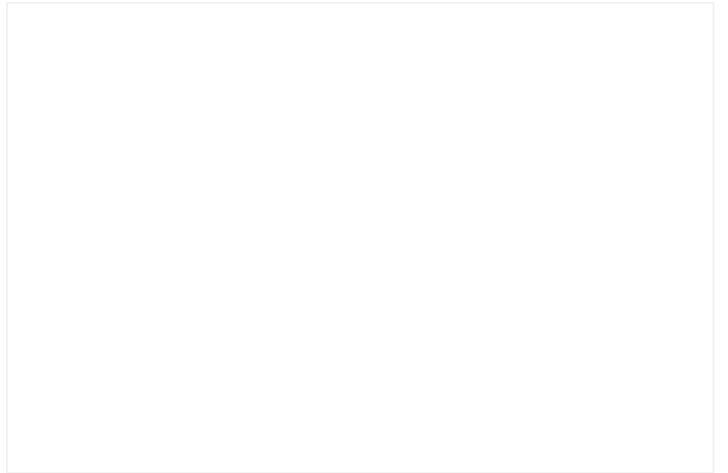
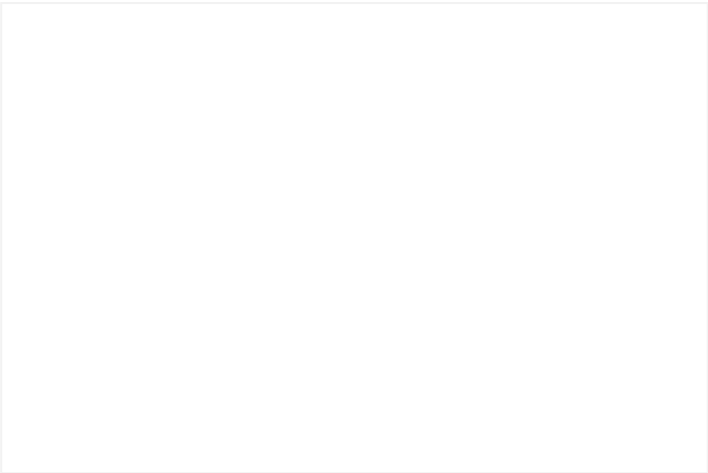
DESCRIPTION:

An exceptional and extensively renovated three-bedroom period maisonette. Offering in excess of 1180sq ft arranged over two floors the property has been meticulously renovated to the highest standard.

The property comprises a beautiful front reception area adorned with authentic wood flooring and cornicing, three generously-sized double bedrooms, a sleek modern bathroom, and a stunning contemporary kitchen/dining space equipped with a convenient hot water tap, abundant storage, and underfloor heating. This space seamlessly flows into a picturesque private landscaped garden.

Thoughtfully renovated, this property offers unparalleled comfort for modern living.

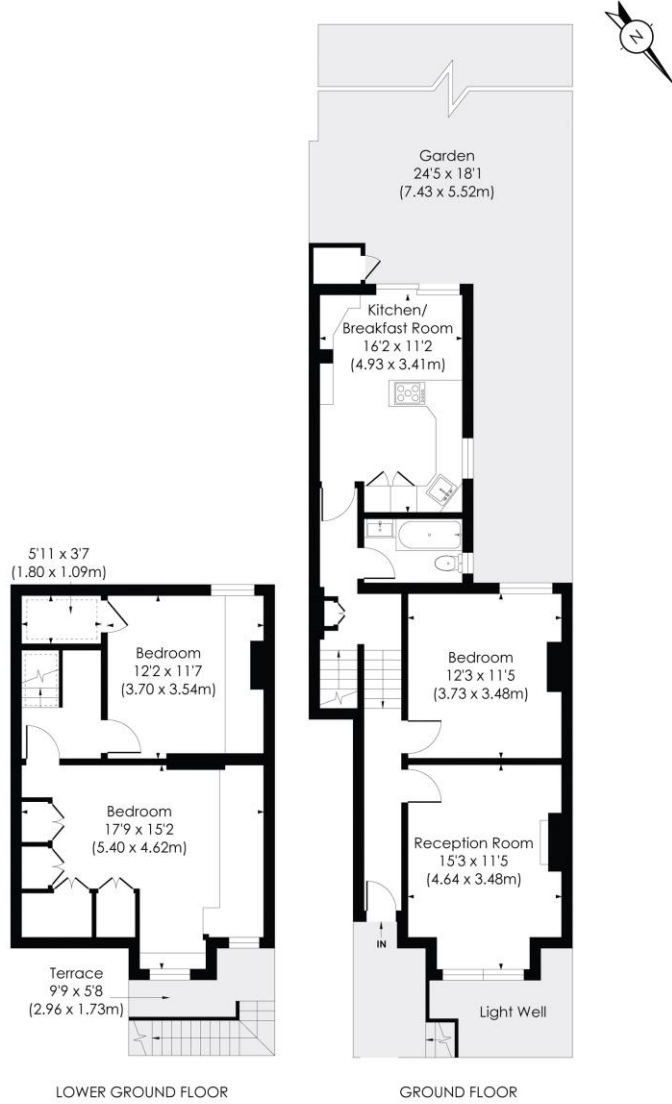
Sellincourt Road located in the much sought-after Tooting Graveney area is a quiet, tree-lined setting a short walk away from Tooting Broadway (Northern line, Zone 3) and Tooting National Rail station (City Thameslink). It is also perfectly situated for access to Tooting's many bars, restaurants and amenities, as well as St George's hospital and university.



SELLINCOURT ROAD, SW17

Approx. Gross Internal Floor Area

1125 Sq. ft/104.56 Sq. m

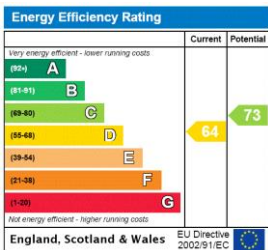


© Pixangle Property Marketing Ltd. info@pixangle.com Tel: 0208 870 2118



This floor plan has been prepared for the purpose of illustration only in accordance with the latest RICS code of measuring practice and is not to scale. All measurements and areas are approximate and whilst every effort has been made to ensure the accuracy of the plan contained here, no responsibility is taken for any error, omission or misstatement.

This floorplan is for illustration purposes only and is not to scale. The position and size of doors, windows, appliances and other features are approximate.



Tooting | 020 8767 5221 | tooting@winkworth.co.uk

for every step...

winkworth.co.uk

Winkworth wishes to inform prospective buyers and tenants that these particulars are a guide and act as information only. All our details are given in good faith and believed to be correct at the time of printing but they don't form part of an offer or contract. No Winkworth employee has authority to make or give any representation or warranty in relation to this property. All fixtures and fittings, whether fitted or not are deemed removable by the vendor unless stated otherwise and room sizes are measured between internal wall surfaces, including furnishings.