



WENTBRIDGE PATH, HERTFORDSHIRE, WD6
£200,000 LEASEHOLD

PURPOSE BUILT ONE BEDROOM FIRST FLOOR FLAT

Borehamwood | 020 8953 8899 | borehamwood@winkworth.co.uk



DESCRIPTION:

This first floor purpose built flat is offered on a chain free basis. The property comprises of a sitting room, bedroom with fitted wardrobes, bathroom and modern fitted kitchen complete with double oven, integrated fridge freezer, washing machine and separate dryer. Located conveniently for transport links and all local amenities. Ideal purchase for first time buyers and investors alike.

AT A GLANCE

- 1 Bedroom
- Entrance Hall
- Kitchen
- Bathroom
- Living Room





Winkworth



Winkworth

Approximate Gross Internal Area = 47.3 sq m / 509 sq ft

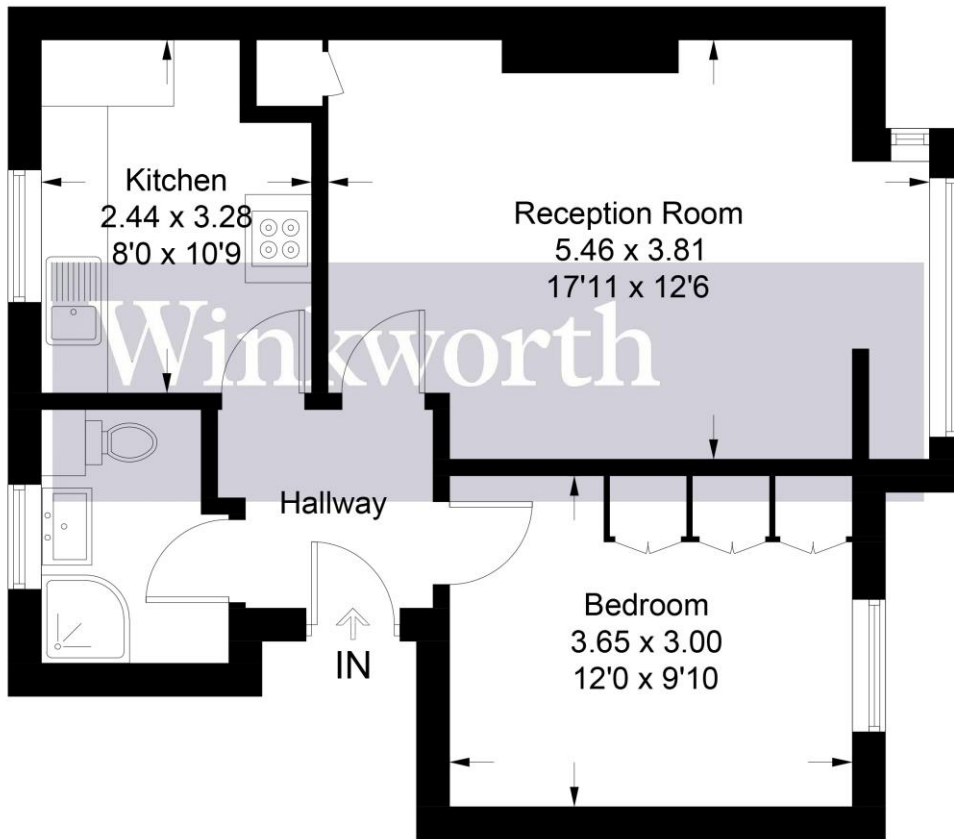
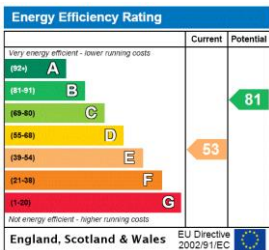


Illustration for identification purposes only, measurements are approximate, not to scale. Winkworth © 2024 (ID1046029)

This floorplan is for illustration purposes only and is not to scale. The position and size of doors, windows, appliances and other features are approximate.



Tenure: Leaseholda
Term: Expires - 31/01/2110
Service Charge: £662.3 per annum
Ground Rent: £ 0 Annually (subject to increase)
Council Tax Band: B

Where no figures are shown, we have been unable to ascertain the information. All figures that are shown were correct at the time of printing.