

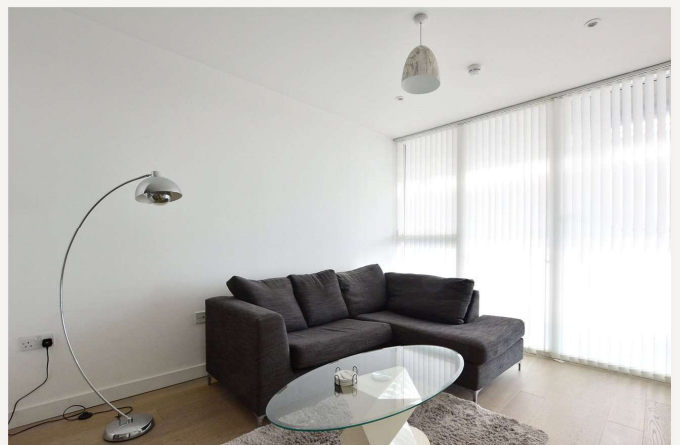
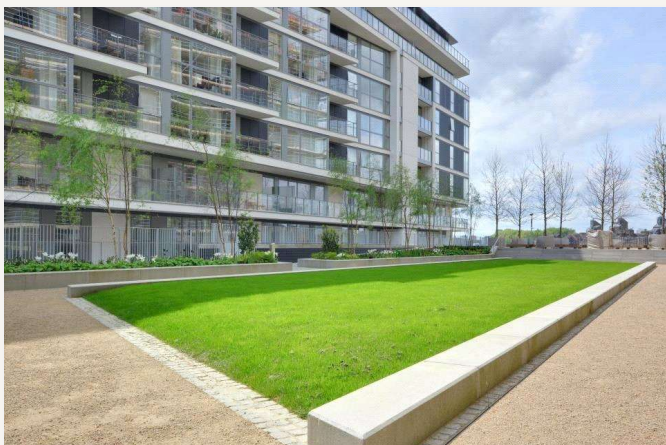


Granite Apartments, London, SE10

£2,100 per month *Furnished*



A modern one bedroom apartment in this popular River Gardens development located moments away from the river walk and Greenwich town centre, with mainline rail & DLR. Offered furnished and available immediately, you earliest viewing is advised.



Blackheath

0208 8520999 | blackheath@winkworth.co.uk



MATERIAL INFO

Deposit: £0.00
Holding Deposit:
Council Tax Band:
EPC rating: To be confirmed

For more information, scan the QR code or visit the link below



<https://www.winkworth.co.uk/rent/property/BLA260075>

Where no figures are shown, we have been unable to ascertain the information. All figures that are shown were correct at the time of printing.