



SWAN PLACE, BERKSHIRE, RG1 6QD  
**£1,650 PER MONTH FURNISHED**

## TWO BEDROOM DUPLEX APARTMENT SITUATED IN THE HEART OF THE TOWN CENTRE

Reading | 0118 4022 300 | [reading@winkworth.co.uk](mailto:reading@winkworth.co.uk)

**Winkworth**

for every step...

[winkworth.co.uk](http://winkworth.co.uk)





## DESCRIPTION:

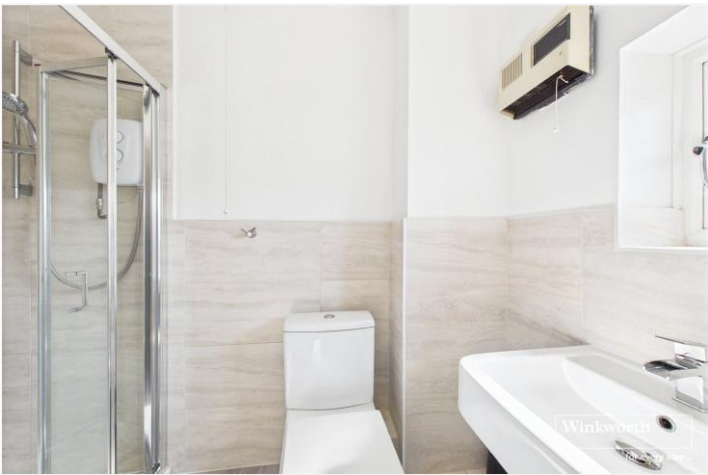
Offered to the market is this two bedroom top floor duplex apartment, situated in this extremely popular town centre development adjacent to the Oracle shopping centre where there is a superb choice of riverside restaurants and bars. The well-appointed accommodation comprises of a large dual aspect sitting room with separate kitchen, master bedroom with an en suite, further double bedroom which is complemented by a three piece bathroom. Further benefits include double glazing and one residents allocated parking space. Furnished. Available 16th August 2025.

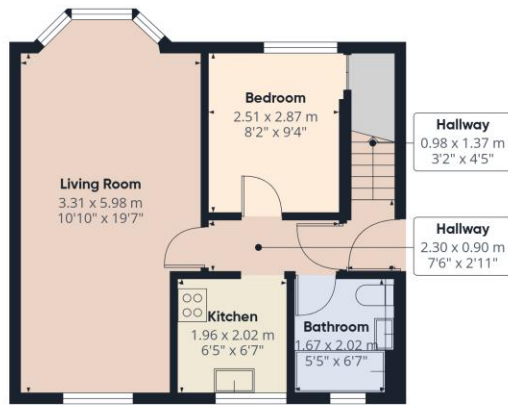
Please note the landlord of this property is an employee of Winkworth.

## AT A GLANCE

- Two double bedroom apartment
- Sought After Town Centre Development
- Accommodation Over Two Floors
- Two bathrooms
- Council tax band C
- Allocated Parking Space
- Available 16th August







Ground Floor



Floor 1

**Winkworth**

**Approximate total area<sup>(1)</sup>**  
57 m<sup>2</sup>  
613 ft<sup>2</sup>

(1) Excluding balconies and terraces

Calculations reference the RICS IPMS 3C standard. Measurements are approximate and not to scale. This floor plan is intended for illustration only.

GIRAFFE 360

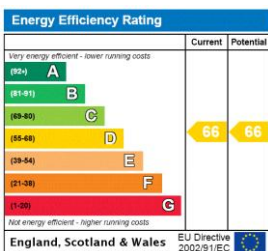
This floorplan is for illustration purposes only and is not to scale. The position and size of doors, windows, appliances and other features are approximate.

**Deposit: £1,903.85**

**Holding Deposit:**

**Council Tax Band: C**

Where no figures are shown, we have been unable to ascertain the information. All figures that are shown were correct at the time of printing.



Reading | 0118 4022 300 | [reading@winkworth.co.uk](mailto:reading@winkworth.co.uk)

**Winkworth**

**for every step...**

[winkworth.co.uk](http://winkworth.co.uk)

Winkworth wishes to inform prospective buyers and tenants that these particulars are a guide and act as information only. All our details are given in good faith and believed to be correct at the time of printing but they don't form part of an offer or contract. No Winkworth employee has authority to make or give any representation or warranty in relation to this property. All fixtures and fittings, whether fitted or not are deemed removable by the vendor unless stated otherwise and room sizes are measured between internal wall surfaces, including furnishings.