



AVANTGARDE TOWER, AVANTGARDE PLACE, LONDON, E1
£835,000 LEASEHOLD

**AN IMPRESSIVE TWO BEDROOM TWO BATHROOM
APARTMENT WITH BREATHTAKING VIEWS OF THE CITY
SKYLINE NEXT TO SHOREDITCH HIGH STREET STATION**

Shoreditch | 020 7749 7650 | shoreditch@winkworth.co.uk

Winkworth

winkworth.co.uk

See things differently



DESCRIPTION:

A breath-taking two-bedroom, two-bathroom City apartment located on the tenth floor of the highly sought-after Avant Garde development. The apartment offers spectacular views of the City skyline and boasts a triple aspect open plan kitchen/living room with floor to ceiling glass which is a stand out feature of the apartment.

The property comprises entrance hall with storage space, family bathroom with bath and shower over attachment, floor to ceiling tiles, wall mounted mirror, chrome towel rails and spot lights, master bedroom with private south-facing balcony, fitted wardrobe and an en-suite shower room, a further double bedroom and an open plan kitchen living area with another private south-facing balcony, the kitchen has built in appliances including; fridge/freezer, washing machine, dishwasher, microwave, induction hob and electric cooker.

Additional benefits are the comfort cooling system, 24hr concierge service, communal gym, resident's lounge, courtyard garden and roof terrace. Avant Garde is seconds from Shoreditch High Street Station and is within walking distance of Liverpool Street Station offering access across the City. You also have Brick Lane and Spitalfields Market on your doorstep with a vast array of boutique shops, art galleries, pop ups, cafes, bars and restaurants.

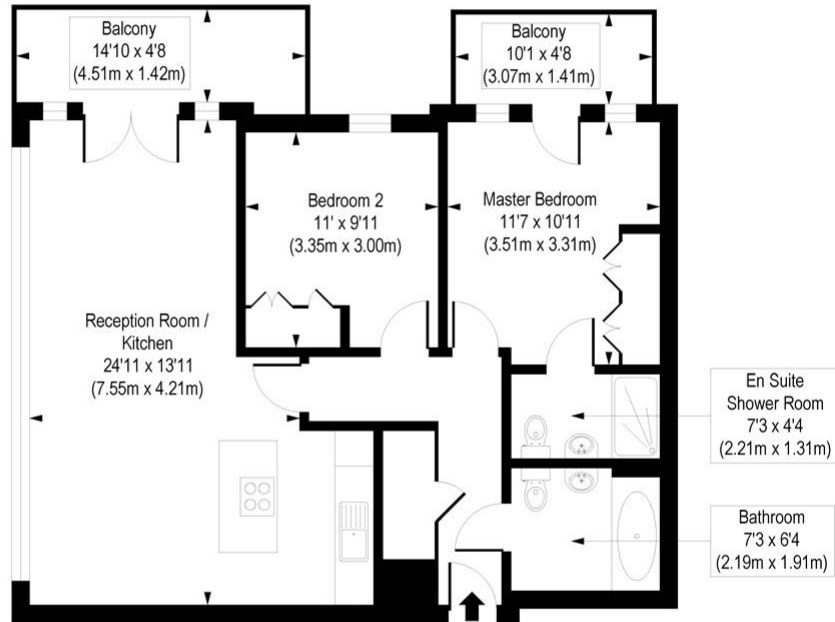
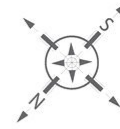
The property is being offered Chain Free.

Winkworth



Winkworth

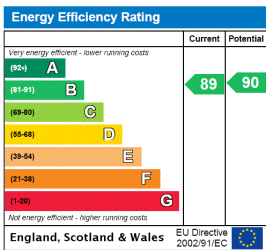
Avantgarde Tower, Avantgarde Place, E1
 Approx. Gross Internal Floor Area 785 sq. ft / 72.95 sq. m



Tenth Floor

COMPLIANT WITH RICS CODE OF MEASURING PRACTICE. Floorplan is for illustrative purposes only and is not to scale. Every attempt has been made to ensure the accuracy of the floorplan shown, however all measurements, fixtures, fittings and data shown are an approximate interpretation for illustrative purposes only. Liability for errors, omissions or mis-statement through negligence or otherwise is hereby excluded.

This floorplan is for illustration purposes only and is not to scale. The position and size of doors, windows, appliances and other features are approximate.



Shoreditch | 020 7749 7650 | shoreditch@winkworth.co.uk



winkworth.co.uk

See things differently

Winkworth wishes to inform prospective buyers and tenants that these particulars are a guide and act as information only. All our details are given in good faith and believed to be correct at the time of printing but they don't form part of an offer or contract. No Winkworth employee has authority to make or give any representation or warranty in relation to this property. All fixtures and fittings, whether fitted or not are deemed removable by the vendor unless stated otherwise and room sizes are measured between internal wall surfaces, including furnishings.