



DRYBURGH ROAD, SW15
£2,750 PER MONTH UNFURNISHED

An incredibly spacious two double bedroom, two bathroom apartment with off street parking space and private terrace

Putney | 020 8877 1000 | putney@winkworth.co.uk

Winkworth

for every step...

winkworth.co.uk



DESCRIPTION:

The stylish semi open plan kitchen is fitted with modern appliances including a gas hob, electric oven and lots of storage.

The generous reception room with wooden flooring has doors that open directly to the private terrace which leads to the substantial and well-maintained communal garden. The accommodation further comprises two double bedrooms and two bathrooms.

The property further benefits from an allocated parking space and is located a short distance to Putney High Street, with excellent transport links via Putney Station (for services to London Waterloo) and East Putney (for District Line services).

CGI furniture used in some images.

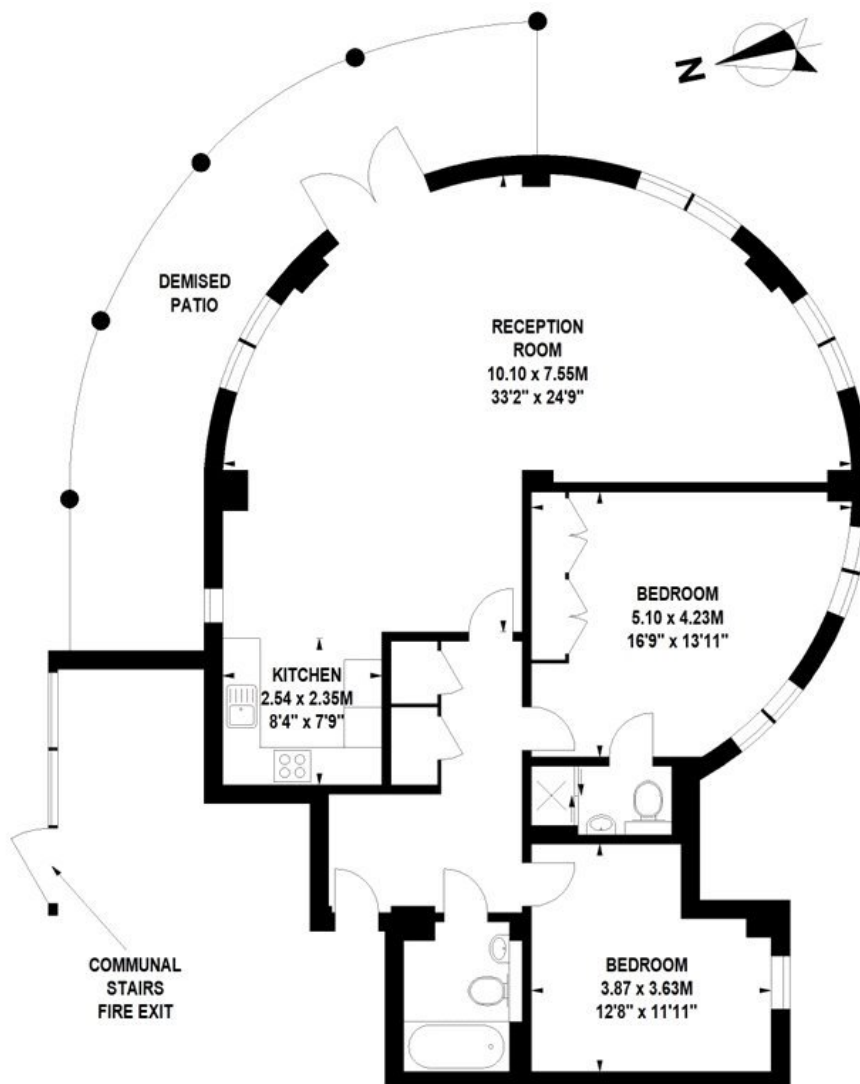


ACCOMMODATION

Long Let, 2 Bedrooms, 1 Reception Rooms, 2 Bathrooms, Flat/Apartment, Basement, Patio, Communal Gardens, Off Street Parking, Modern, Town/City, Unfurnished, 1184 Approx Sq Ft

Mercury Mansions, Dryburgh Road, SW15

Approximate Gross Internal Area 110 sq.m / 1184 sq. ft



Lower Ground Floor

Floor Plan produced for WINKWORTH by Mays Floorplans © . Tel 020 3397 4594

Illustration for identification purposes only, not to scale

All measurements are maximum, and include wardrobes and window bays where applicable

This floorplan is for illustration purposes only and is not to scale. The position and size of doors, windows, appliances and other features are approximate.

Deposit: 5 weeks' rent

Holding Deposit: 1 week's rent

Council Tax Band: Wandsworth

Where no figures are shown, we have been unable to ascertain the information. All figures that are shown were correct at the time of printing.

Putney | 020 8877 1000 | putney@winkworth.co.uk

Winkworth

for every step...

winkworth.co.uk

Winkworth wishes to inform prospective buyers and tenants that these particulars are a guide and act as information only. All our details are given in good faith and believed to be correct at the time of printing but they don't form part of an offer or contract. No Winkworth employee has authority to make or give any representation or warranty in relation to this property. All fixtures and fittings, whether fitted or not are deemed removable by the vendor unless stated otherwise and room sizes are measured between internal wall surfaces, including furnishings.