



52 SEWELL AVENUE, WOKINGHAM, BERKSHIRE, RG41 1NS  
**£565,000 FREEHOLD**

**NO ONWARD CHAIN COMPLICATIONS WITH THIS  
3/4 BEDROOM FAMILY HOME.**

**Winkworth**

Wokingham | 01189 072777 | [wokingham@winkworth.co.uk](mailto:wokingham@winkworth.co.uk)

for every step...

[winkworth.co.uk](http://winkworth.co.uk)





### DESCRIPTION:

Situated in a sought after location, this well presented chalet style family home offers flexible living accommodation with 3/4 bedrooms comprising entrance hall, cloakroom, living/dining room, fitted kitchen with integrated oven and hob, study/ground floor bedroom four, three bedrooms to the first floor and first floor family bathroom. Further benefits include radiator central heating and double glazed windows.

Outside you have off road parking for several cars, single garage and private rear garden.

The property also falls within desirable school catchments and an early viewing is strongly recommended.

### AT A GLANCE

- No Chain
- Sought after location
- 3/4 bedrooms
- Modern Kitchen
- Well presented throughout
- Generous plot
- Ultra fast Broadband 1000 Mbps
- Council tax band E Wokingham
- Satellite / Fibre TV Availability BT, Sky & Virgin
- Mobile coverage EE, Vodafone, Three & O2

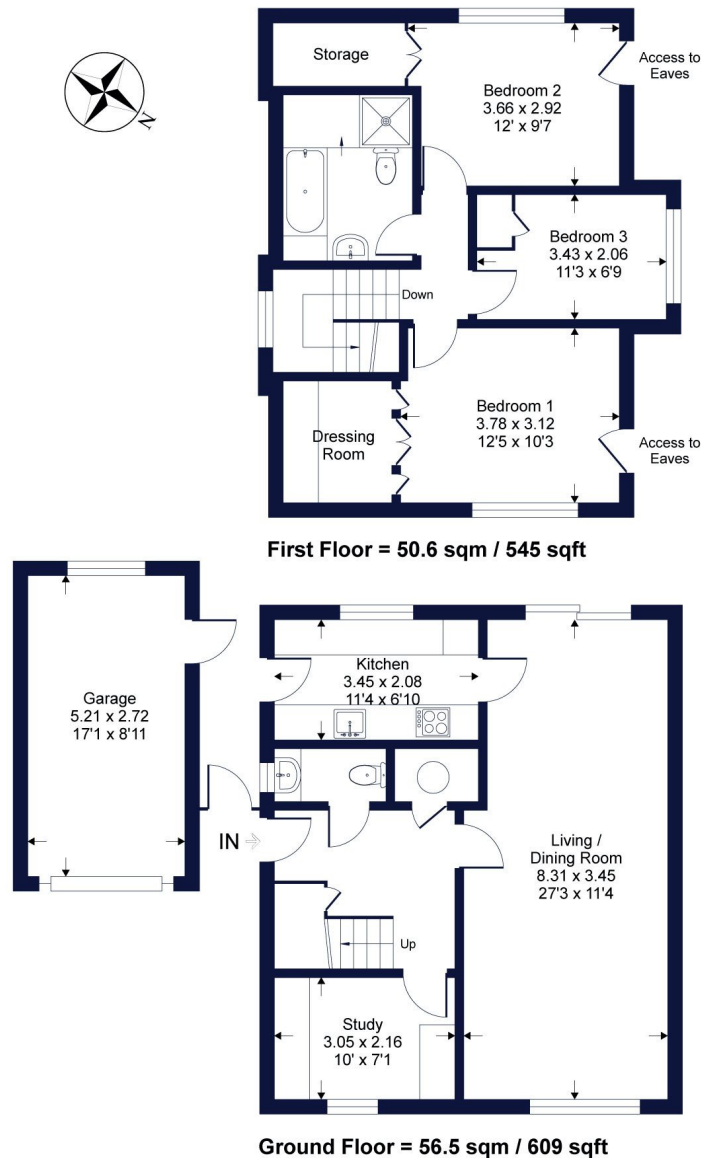




## Sewell Avenue

Winkworth

Approximate Gross Internal Area = 107.2 sq m / 1154 sq ft  
Approximate Garage Internal Area = 14.1 sq m / 152 sq ft  
Approximate Total Internal Area = 121.3 sq m / 1306 sq ft



Whilst every attempt has been made to ensure the accuracy of the floor plan contained here, measurements of doors, windows, rooms and any other items are approximate and no responsibility is taken for any error, omission or mis-statement. This plan is for illustrative purposes only and should be used as such by any prospective purchaser.

This floorplan is for illustration purposes only and is not to scale. The position and size of doors, windows, appliances and other features are approximate.

Wokingham | 01189 072777 | wokingham@winkworth.co.uk

Winkworth

for every step...

[winkworth.co.uk](http://winkworth.co.uk)

Winkworth wishes to inform prospective buyers and tenants that these particulars are a guide and act as information only. All our details are given in good faith and believed to be correct at the time of printing but they don't form part of an offer or contract. No Winkworth employee has authority to make or give any representation or warranty in relation to this property. All fixtures and fittings, whether fitted or not are deemed removable by the vendor unless stated otherwise and room sizes are measured between internal wall surfaces, including furnishings.