



Winkworth

Elstree Way, Hertfordshire, WD6

£260,000 *Leasehold*



FIFTH FLOOR APARTMENT WITH BALCONY, CONCIERGE, GYMNASIUM AND SECURE PARKING

KEY FEATURES

- 1 Bedroom
- Balcony
- Concierge
- Multiple Lifts
- Gymnasium
- Secure Parking



Winkworth



Winkworth

Borehamwood

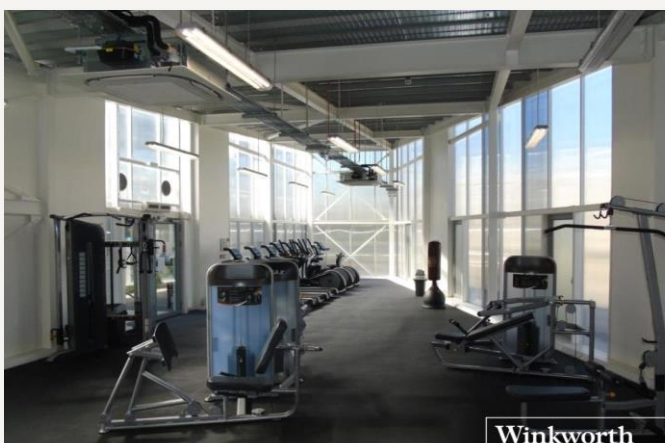
020 8953 8899 | borehamwood@winkworth.co.uk



Situated on the fifth floor of the highly regarded Elstree House development and boasting luxuries such as a concierge, secure gated parking, gymnasium and multiple lifts is this one bedroom apartment with a balcony measuring approx. six metres squared.

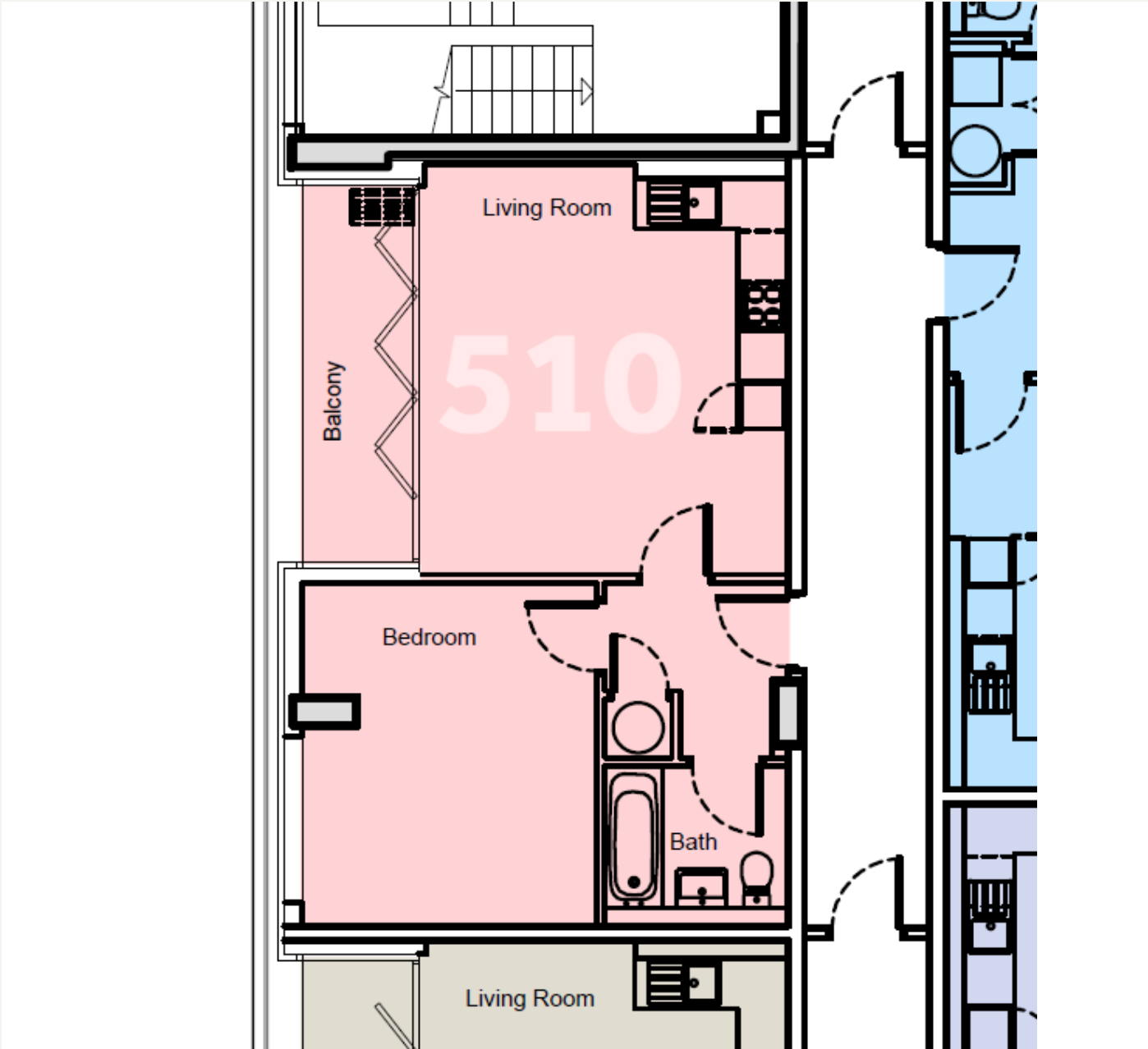
Located close to the newly constructed multi million pound Sky Studios main arterial roads including the A1 M1 and M25





MATERIAL INFO

Tenure: Leasehold
Term: 116 year and 1 months
Service Charge: £2658 per annum
Ground Rent: £ 350 Annually (subject to increase)
Council Tax Band: C
EPC rating: D



Score	Energy rating	Current	Potential
92+	A		
81-91	B		
69-80	C		
55-68	D	60 D	60 D
39-54	E		
21-38	F		
1-20	G		

For more information, scan the QR code or visit the link below



<https://www.winkworth.co.uk/sale/property/BOR260019>

Where no figures are shown, we have been unable to ascertain the information. All figures that are shown were correct at the time of printing.

Borehamwood

020 8953 8899 | borehamwood@winkworth.co.uk

Winkworth wishes to inform prospective buyers and tenants that these particulars are a guide and act as information only. All our details are given in good faith and believed to be correct at the time of printing but they don't form part of an offer or contract. No Winkworth employee has authority to make or give any representation or warranty in relation to this property. All fixtures and fittings, whether fitted or not are deemed removable by the vendor unless stated otherwise and room sizes are measured between internal wall surfaces, including furnishings.