



PRINCES COURT, WEMBLEY, HA9
£700,000 FREEHOLD

Kingsbury | 020 8204 0000 | kingsbury@winkworth.co.uk

Winkworth

[winkworth.co.uk](https://www.winkworth.co.uk)

See things differently

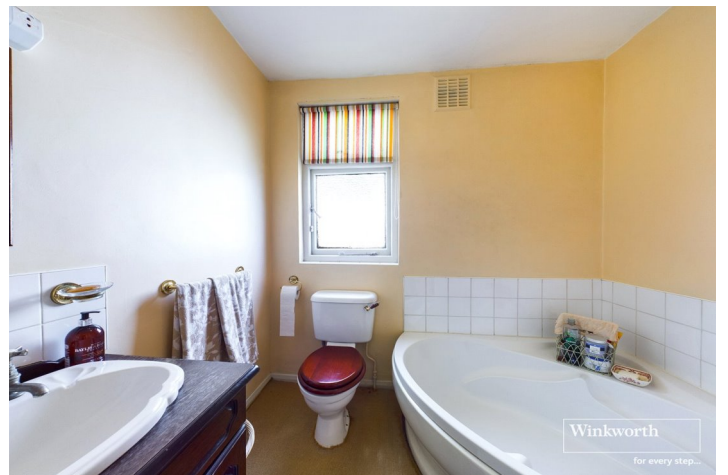


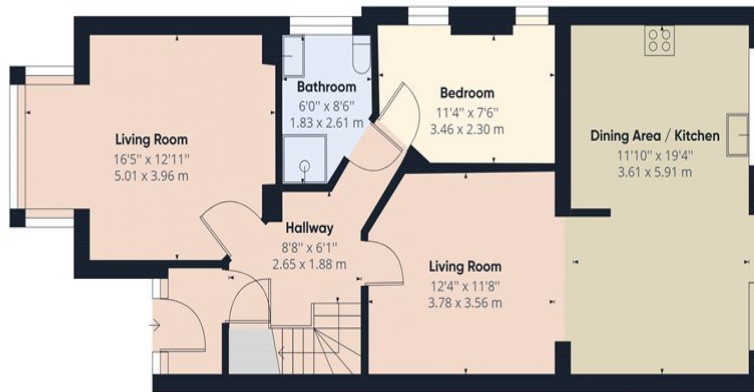
DESCRIPTION: Situated on one of Wembley's most prestigious residential roads and appearing on the market for the first time in almost 50 years, is this characteristic four bedroom Semi - detached family home. Benefitting from lots of light throughout being a corner property, the high ceilings and double length garage makes it a rare find for someone who wants to put their own mark on this beautiful house. Backing onto King Edward VII park and conveniently situated close to Wembley Central, North Wembley and Wembley Park's shopping & transport facilities, you are within the catchment of highly rated schools.

The ground floor of this already extended property consists of a generously sized kitchen, downstairs WC, 2 spacious reception rooms and a kitchen/diner leading into a beautiful rear garden. There is also ample off street parking space and is accessible to several bus routes and local amenities. This is a Chain Free Sale for someone looking to purchase their Forever Family Home.

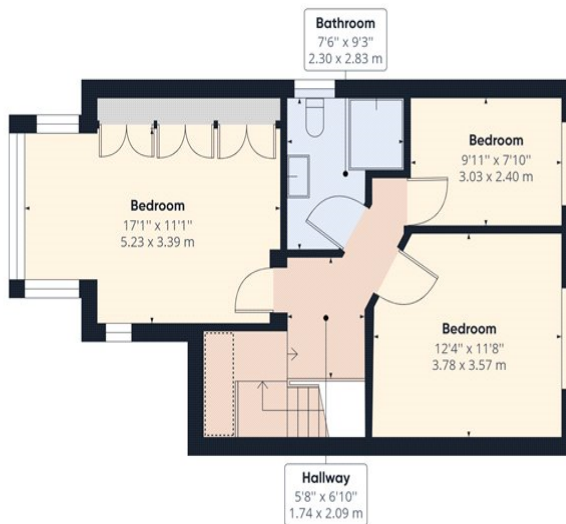


Winkworth





Ground Floor Building 1



Floor 1 Building 1

Approximate total area⁽¹⁾

1375.81 ft²
127.82 m²

Reduced headroom

13.70 ft²
1.27 m²

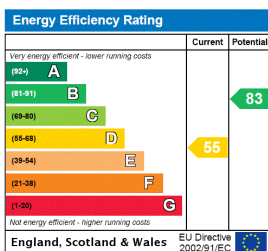
(1) Excluding balconies and terraces

Reduced headroom
(below 1.5m/4.92ft)

While every attempt has been made to ensure accuracy, all measurements are approximate, not to scale. This floor plan is for illustrative purposes only.

GIRAFFE360

This floorplan is for illustration purposes only and is not to scale. The position and size of doors, windows, appliances and other features are approximate.



Kingsbury | 020 8204 0000 | kingsbury@winkworth.co.uk

Winkworth

winkworth.co.uk

See things differently

Winkworth wishes to inform prospective buyers and tenants that these particulars are a guide and act as information only. All our details are given in good faith and believed to be correct at the time of printing but they don't form part of an offer or contract. No Winkworth employee has authority to make or give any representation or warranty in relation to this property. All fixtures and fittings, whether fitted or not are deemed removable by the vendor unless stated otherwise and room sizes are measured between internal wall surfaces, including furnishings.