



Clifton Lodge, Clifton Road, Central Winchester

Asking Price £375,000 Leasehold

Handsome Grade II Listed Victorian Apartment Close to Historic Winchester city centre

This superb first floor apartment is very well presented and offers beautiful period features such as original fireplaces, set within a building built in the mid-1800s. The apartment offers a very bright and spacious reception room and two double bedrooms as well as a large bathroom. The location is wonderful, located moments from the city centre with all it has to offer and just a stone's throw from picturesque Oram's Arbour. The apartment also enjoys that rare commodity of allocated permit parking within a car park to the rear.

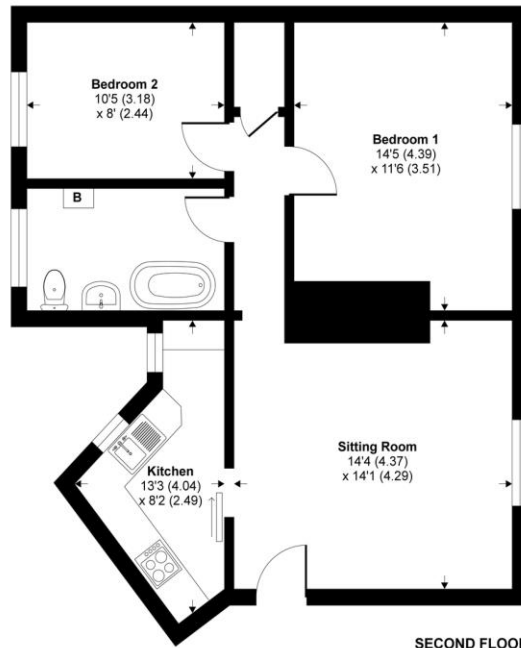
EPC rating D | Council Tax Band C | Service Charge: £500 per quarter | Ground Rent: £0 per annum |

winkworth.co.uk

See all our properties at  [OnTheMarket.com](https://www.onthemarket.com)

Winkworth

See things differently



SECOND FLOOR



Floor plan produced in accordance with RICS Property Measurement Standards incorporating International Property Measurement Standards (IPMS2 Residential). © nitchecom 2020. Produced for Winkworth. REF: 657110

Key Features :

Grade II Listed First Floor Apartment • Two Bedrooms • Kitchen • Spacious Sitting Room • Large Bathroom • Stone's Throw from Oram's Arbour • Located Moments from the City Centre and Mainline Railway Station • Rare Commodity of Permit Parking Within a Private Off-Street Car Park

Please feel free to use this box for your notes about this property!
