



**ROZ HOUSE, 13 STANWAY STREET, N1**  
**£3,150 PER MONTH FURNISHED**

**A SUBLIME APARTMENT WITH BALCONY  
 PERFECT FOR PROFESSIONAL SHARERS.**

**Shoreditch | 020 7749 7650 | [shoreditch@winkworth.co.uk](mailto:shoreditch@winkworth.co.uk)**

Tenant Fees Apply: Details of fees for tenant referencing, tenancy agreement admin fees and renewal fees are available on the Winkworth website and the link can be found with the displayed rent for the property. Tenants should ensure they are fully conversant with these upfront fees and other costs that are involved at the outset of the tenancy before making an offer to rent and your local Winkworth office will provide written details upon request.

***[winkworth.co.uk](http://winkworth.co.uk)***

**Winkworth**

**See things differently**



### DESCRIPTION:

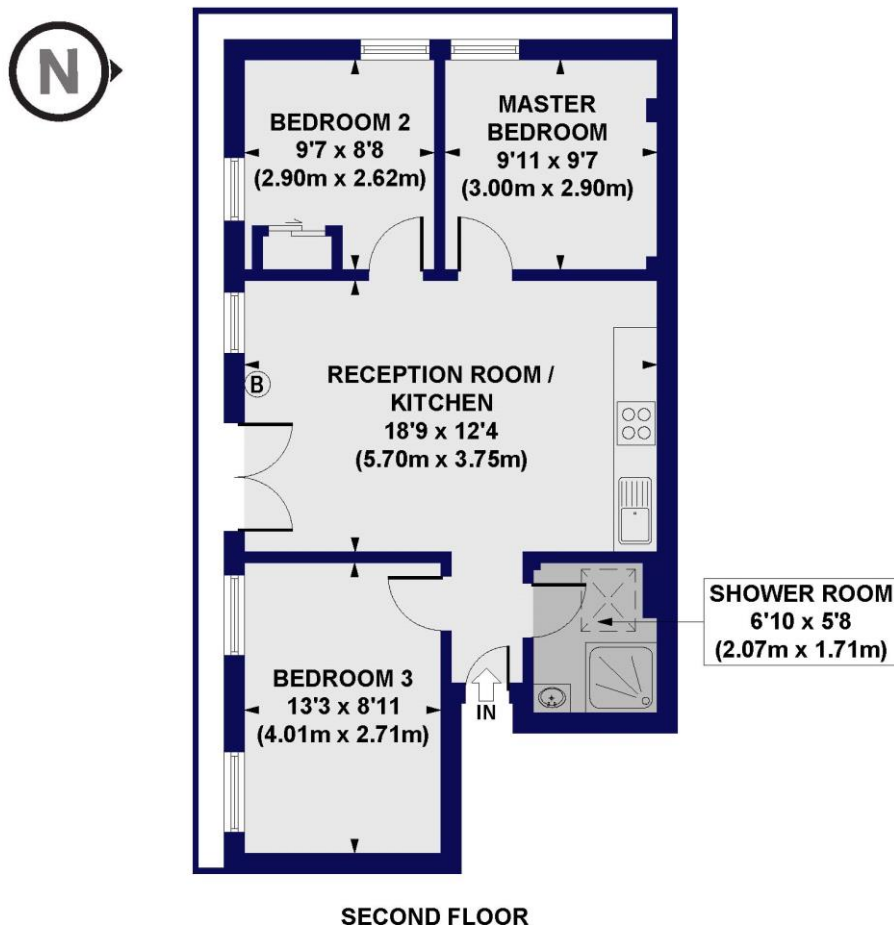
A sublime apartment perfect for professional sharers. The property has been very well kept and comprises three double bedrooms with convenient storage, spacious living room with wooden floors, modern fitted kitchen, bathroom with shower and separate W/C. This property is located only 250m from Hoxton Station on the East London Line and walking distance to Old Street Underground Station on the Northern Line and Liverpool Street Station within the City of London. Hoxton Square and Rivington Street with fashionable bars and restaurants are also only a short walk away

**Winkworth**



Winkworth

**Roz House, Stanway Street, N1**  
Approx. Gross Internal Floor Area 604 sq. ft / 56.15 sq. m



All measurements of walls, doors, windows, fittings and appliances, including their size and location, are shown as standard sizes and do not constitute any warranty or representation by the seller, their agent or CP Creative. Any intending purchaser must satisfy himself by inspection or otherwise as to the correctness of the information contained in these plans. This plan is for illustrative purposes only and should be used as such by any prospective purchasers.

**Winkworth**

This floorplan is for illustration purposes only and is not to scale. The position and size of doors, windows, appliances and other features are approximate.

Shoreditch | 020 7749 7650 | shoreditch@winkworth.co.uk

**Winkworth**

*winkworth.co.uk*

See things differently

Winkworth wishes to inform prospective buyers and tenants that these particulars are a guide and act as information only. All our details are given in good faith and believed to be correct at the time of printing but they don't form part of an offer or contract. No Winkworth employee has authority to make or give any representation or warranty in relation to this property. All fixtures and fittings, whether fitted or not are deemed removable by the vendor unless stated otherwise and room sizes are measured between internal wall surfaces, including furnishings.