

SELBORNE ROAD, N14
£325,000 LEASEHOLD

**A BEAUTIFULLY PRESENTED FIRST FLOOR
 FLAT LOCATED ON A DESIRABLE TREE-LINED
 ROAD IN SOUTHGATE.**

Palmers Green | 020 8920 9900 | palmersgreen@winkworth.co.uk

Winkworth

for every step...

winkworth.co.uk



DESCRIPTION:

A stunning one bedroom flat situated on the first floor of an Edwardian conversion, situated on a desirable tree-lined road within easy reach of Southgate tube and Palmers Green BR station, as well as the popular Broomfield Park and Grovelands Park.

This beautifully presented property benefits from spacious living accommodation with high ceilings. You will find a generously sized reception room with ample space for a dining table. There is also an attractive fitted kitchen with a range of integrated appliances and a breakfast bar, a modern bathroom, and a large double bedroom with a built-in wardrobe. The property also benefits recently installed double glazed sash windows in the reception room and the bedroom. Offered for sale chain-free and a remaining lease term of just over 160 years.

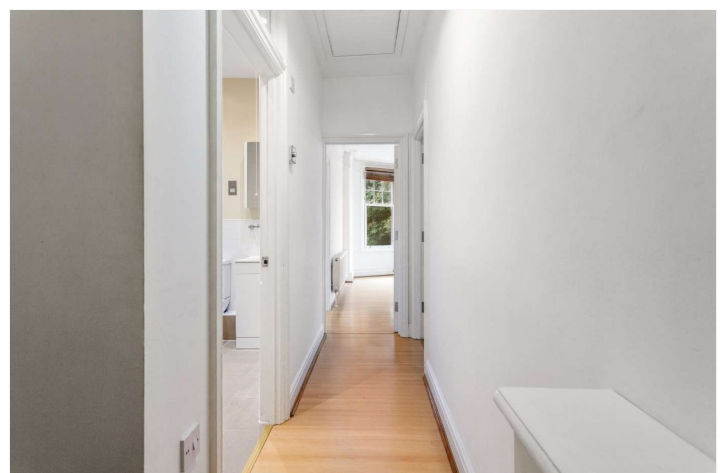
Additional Information:

-Ground Rent £250 Per Annum

-Service Charge for period 2020/21 £966.25 per annum

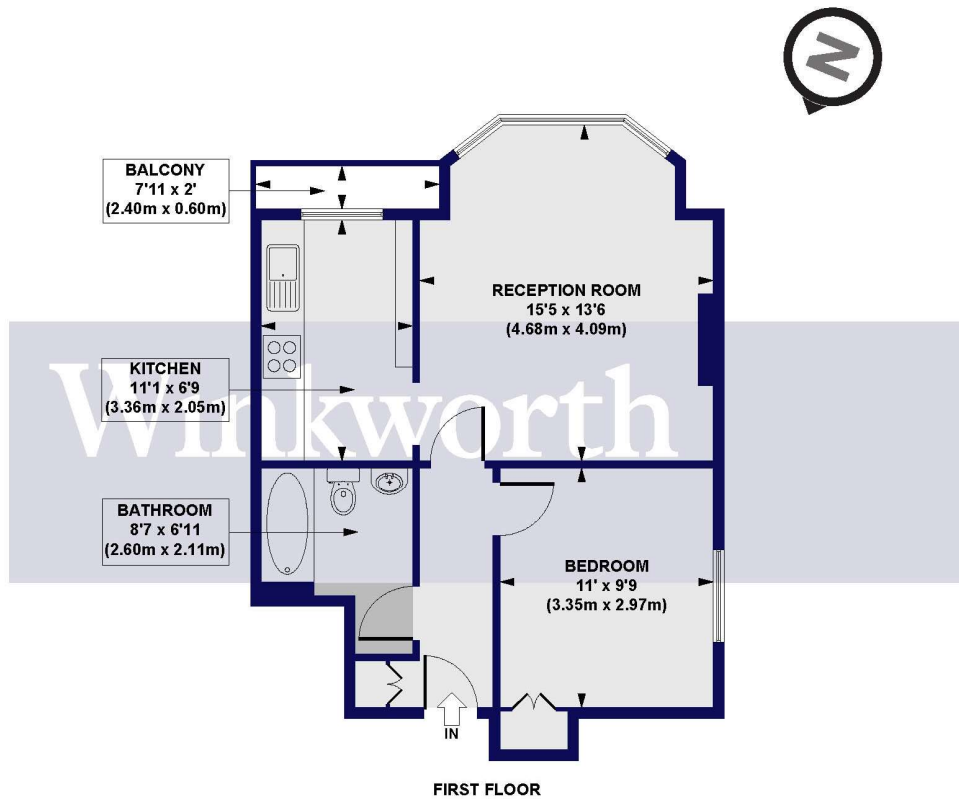
AT A GLANCE:

- Beautifully Presented First Floor Edwardian Conversion
- Desirable Location
- Easy Reach of Transport Links and Parks
- Chain-Free
- Spacious Accommodation with High Ceilings
- Impressive Reception Room with a Large Bay Window
- Attractive Fitted Kitchen
- Ideal First-Time Purchase or Buy-to-Let Investment
- Long Remaining Lease Term



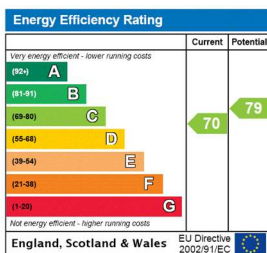


Selborne Road, N14
Approx. Gross Internal Floor Area 484 sq. ft / 44.99 sq. m



All measurements of walls, doors, windows, fittings and appliances, including their size and location, are shown as standard sizes and do not constitute any warranty or representation by the seller, their agent or CP Creative. Any intending purchaser must satisfy himself by inspection or otherwise as to the correctness of the information contained in these plans.

This floorplan is for illustration purposes only and is not to scale. The position and size of doors, windows, appliances and other features are approximate.



Winkworth

Palmers Green | 020 8920 9900 | palmersgreen@winkworth.co.uk

for every step...

winkworth.co.uk

Winkworth wishes to inform prospective buyers and tenants that these particulars are a guide and act as information only. All our details are given in good faith and believed to be correct at the time of printing but they don't form part of an offer or contract. No Winkworth employee has authority to make or give any representation or warranty in relation to this property. All fixtures and fittings, whether fitted or not are deemed removable by the vendor unless stated otherwise and room sizes are measured between internal wall surfaces, including furnishings.