



BATHURST GARDENS, LONDON, NW10
£739,950 SHARE OF FREEHOLD

A LOVELY THREE BEDROOM APARTMENT WITH 1083 SQ. FT. OF ACCOMMODATION SPREAD OVER TWO FLOORS IN THIS GREAT LOCATION IN KENSAL RISE.

Kensal & Queens Park | 0208 960 4947 | kensalrise@winkworth.co.uk

Winkworth

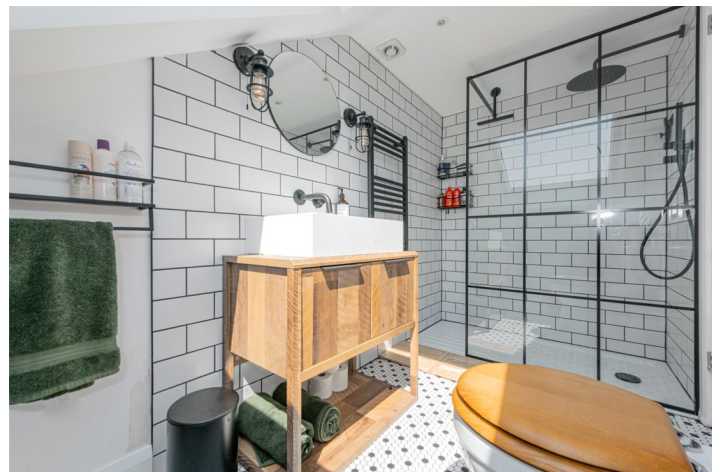
winkworth.co.uk

See things differently



LOCATION:

Bathurst Gardens is a fantastic location and this particular property is only 400m from Kensal Green Tube Station (Bakerloo line which also has London Overground to Euston) and all the amenities of College Road. The property is also just short walk from Chamberlayne Road and Queens Park with all the cafe's bars and open spaces that this area offers. Highly recommended.



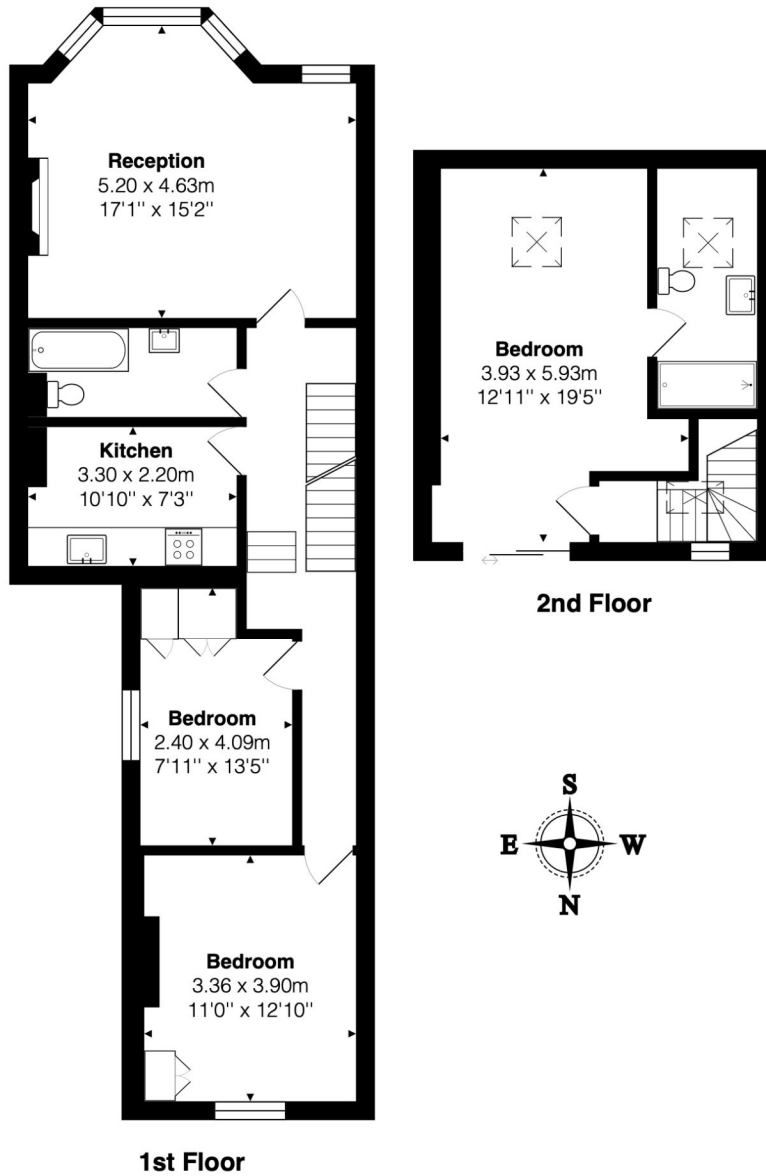
Winkworth



DESCRIPTION:

This beautiful three-bedroom split-level flat has over 1080 sq. ft. of internal accommodation including a fantastic, air-conditioned new loft conversion housing a master bedroom with an impressive floor-to-ceiling sliding Juliet balcony and a stylish en-suite shower room. Downstairs on the first-floor buyers will find a bright and spacious reception room at the front of the building with bay windows and feature fireplace, two further generous double bedrooms at the rear and a modern fitted kitchen and strikingly designed bathroom. The property is in good condition throughout and is offered to the market with a share of freehold.

Winkworth



Total Area: 100.6 m² ... 1083 ft²

All measurements are approximate and for display purposes only

This floorplan is for illustration purposes only and is not to scale. The position and size of doors, windows, appliances and other features are approximate.

Kensal & Queens Park | 0208 960 4947 | kensalrise@winkworth.co.uk



winkworth.co.uk

See things differently

winkworth wishes to inform prospective buyers and tenants that these particulars are a guide and act as information only. All our details are given in good faith and believed to be correct at the time of printing but they don't form part of an offer or contract. No winkworth employee has authority to make or give any representation or warranty in relation to this property. All fixtures and fittings, whether fitted or not are deemed removable by the vendor unless stated otherwise and room sizes are measured between internal wall surfaces, including furnishings.