



## CHAPTER STREET, SW1P

£650,000

LEASEHOLD

### At a glance...

- Two Double Bedrooms
- Separate Kitchen
- Underground Parking
- Modern Bathroom plus WC
- Low Service Charges
- Council Tax Band: E

**Winkworth**

for every step...



Score	Energy rating	Current	Potential
92+	A		
81-91	B		
69-80	C		74 C
55-68	D	59 D	
39-54	E		
21-38	F		
1-20	G		

## CHAPTER STREET, SW1P

£650,000

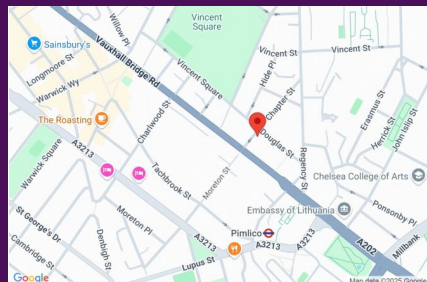
LEASEHOLD

A bright, modern flat on the ground floor of this popular modern building in Westminster. Located a short walk to Pimlico underground and Victoria Station the flat covers some 707 sq ft.

Briefly the accommodation comprises a great reception room with dual aspect windows, two double bedrooms, separate contemporary kitchen, smart bathroom and an additional WC.

There is also access to a secure underground parking space.

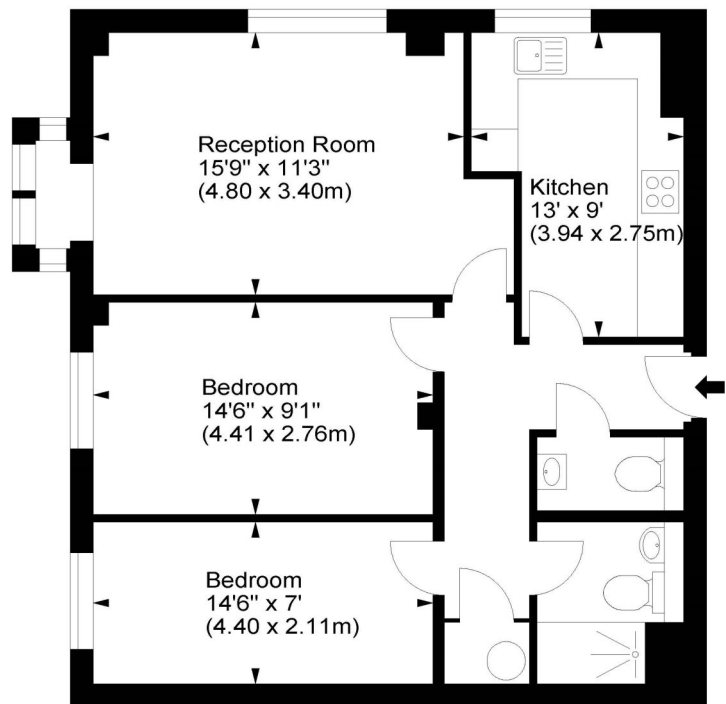
An incredibly practical and secure apartment which would make an ideal central London base, a great investment and a lovely home in the heart of London.



winkworth wishes to inform prospective buyers and tenants that these particulars are a guide and act as information only. All our details are given in good faith and believed to be correct at the time of printing but they don't form part of an offer or contract. No winkworth employee has authority to make or give any representation or warranty in relation to this property. All fixtures and fittings, whether fitted or not are deemed removable by the vendor unless stated otherwise and room sizes are measured between internal wall surfaces - including fireplaces.

### Chapter Street, SW1

Approx. Gross Internal Area  
707 Sq Ft - 65.68 Sq M



Ground Floor

For illustration purposes only. Not to scale.  
All measurements are taken and shown at floor level.  
www.r3photography.co.uk © Photography / Floor Plans / Lease Plans / EPCs



Pimlico & Westminster

020 7828 1786

pimlico@winkworth.co.uk

winkworth.co.uk/pimlico-westminster

**Winkworth**

for every step...