



GREENWICH SOUTH STREET, GREENWICH, LONDON, SE10  
**£985,000 FREEHOLD**

**A WELL-PRESENTED THREE BEDROOM VICTORIAN TERRACED HOUSE, THAT IS PERFECTLY LOCATED IN THE HEART OF WEST GREENWICH AND JUST MOMENTS FROM THE TOWN CENTRE. MEASURING 1054 SQ FT AND OFFERED TO THE MARKET CHAIN FREE.**

Greenwich | 02030533033 | [greenwich@winkworth.co.uk](mailto:greenwich@winkworth.co.uk)

**Winkworth**

for every step...

*[winkworth.co.uk](http://winkworth.co.uk)*





## DESCRIPTION:

A well-presented three bedroom Victorian terraced house, that is perfectly located in the heart of West Greenwich and just moments from the town centre. Measuring 1054 sq ft and offered to the market chain free.

Whilst in good order throughout the property, in our opinion, would require a little bit of work. The accommodation comprises of two bright reception rooms, which are semi open plan with each other. Both have hard wood flooring. To the rear is a really good size 19ft kitchen breakfast room, which in turn leads onto a small paved garden to the rear. Upstairs there are three bedrooms and a well fitted family bathroom. Added benefits include a cellar.

Positioned on the corner of Circus Street and Greenwich South Street, mainline rail and DLR are literally a stones throw away. The town centre is then just a few minutes walk, offering a fabulous array of shops and restaurants, along with the immensely popular Greenwich Market, riverboat service and, of course, The Royal Park with its Observatory. Your earliest viewing is highly recommended.

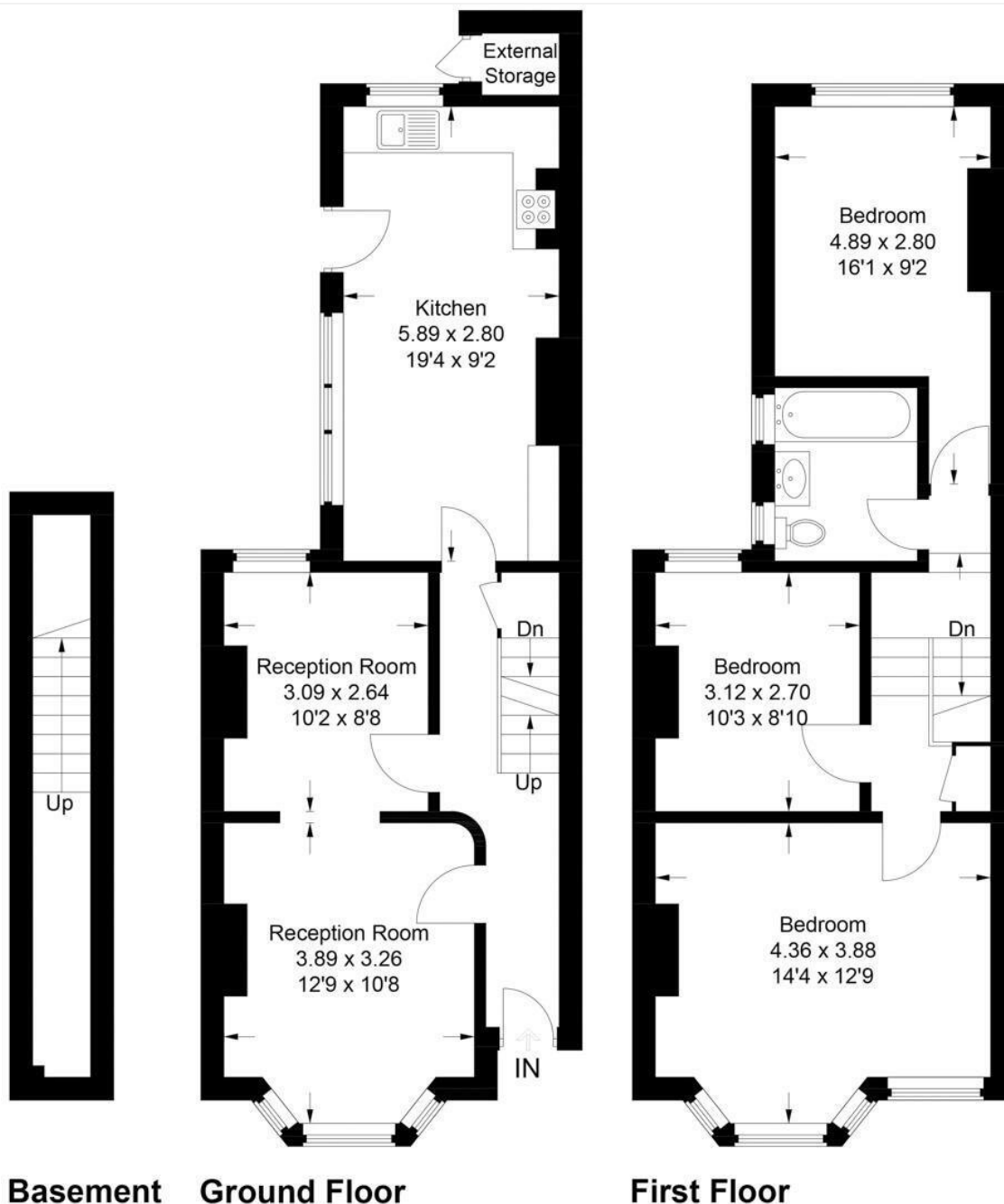
## AT A GLANCE

- three bedroom house
- Victorian mid terrace
- circa 1054 sq ft
- two reception areas
- kitchen breakfast room
- fabulous location
- West Greenwich
- moments from town
- few minutes from rail and DLR
- close to Royal Park









Approximate Gross Internal Area  
 98.0 sq m / 1054.9 sq ft  
 External Storage = 0.9 sq m / 9.6 sq ft  
 Total = 98.9 sq m / 1064.5 sq ft

This floorplan is for illustration purposes only and is not to scale. The position and size of doors, windows, appliances and other features are approximate.

Score	Energy rating	Current	Potential
92+	A		
81-91	B		87 B
69-80	C		
55-68	D	59 D	
39-54	E		
21-38	F		
1-20	G		

**Tenure:** Freehold

**Council Tax Band:** E

Where no figures are shown, we have been unable to ascertain the information. All figures that are shown were correct at the time of printing.

Greenwich | 02030533033 | greenwich@winkworth.co.uk

**Winkworth**

for every step...

winkworth.co.uk

Winkworth wishes to inform prospective buyers and tenants that these particulars are a guide and act as information only. All our details are given in good faith and believed to be correct at the time of printing but they don't form part of an offer or contract. No Winkworth employee has authority to make or give any representation or warranty in relation to this property. All fixtures and fittings, whether fitted or not are deemed removable by the vendor unless stated otherwise and room sizes are measured between internal wall surfaces, including furnishings.