



EARLS COURT ROAD, LONDON, W8
£575,000 SHARE OF FREEHOLD

**A VERY WELL PRESENTED ONE BEDROOM FLAT
 SITUATED ON THE SECOND FLOOR OF A VICTORIAN
 TERRACED HOUSE.**

Kensington | 020 7727 1500 | kensington@winkworth.co.uk

Winkworth

for every step...

winkworth.co.uk



DESCRIPTION:

A very well presented one bedroom flat situated on the second floor of a Victorian terraced house. The flat has attractive views over Pembroke Square. Accommodation includes a west facing reception room with wood floors and an arch through to a separate kitchen. The East facing bedroom is located quietly to the rear of the building.

ACCOMMODATION:

Share of Freehold, 1 Bedroom, 1 Reception Room,
1 Bathroom, Flat/Apartment

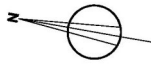
LOCAL AUTHORITY:

Royal Borough of Kensington and Chelsea

NEAREST PUBLIC TRANSPORT:

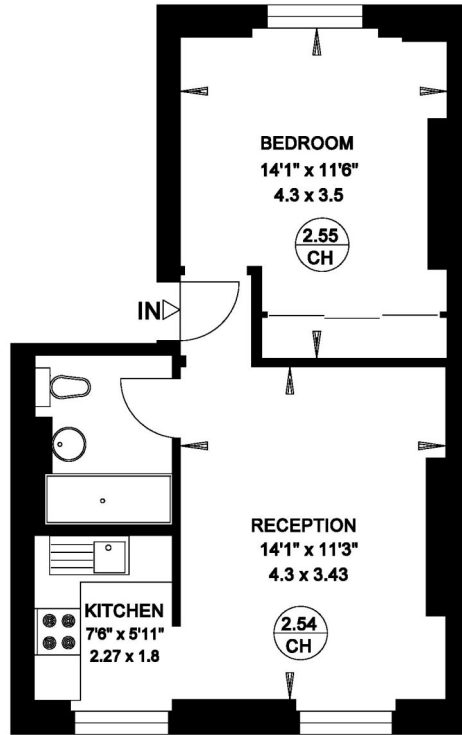
Earls Court
High Street Kensington
Kensington Olympia





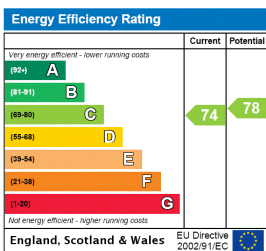
**EARLS COURT ROAD
LONDON W8**

**Gross Internal Area = 39 sq. metres
421 sq. feet**



SECOND FLOOR

This floorplan is for illustration purposes only and is not to scale. The position and size of doors, windows, appliances and other features are approximate.



Kensington | 020 7727 1500 | kensington@winkworth.co.uk

Winkworth

for every step...

winkworth.co.uk

Winkworth wishes to inform prospective buyers and tenants that these particulars are a guide and act as information only. All our details are given in good faith and believed to be correct at the time of printing but they don't form part of an offer or contract. No Winkworth employee has authority to make or give any representation or warranty in relation to this property. All fixtures and fittings, whether fitted or not are deemed removable by the vendor unless stated otherwise and room sizes are measured between internal wall surfaces, including furnishings.