



**FIRST FLOOR FLAT, DEVONSHIRE ROAD, LONDON, SE23**  
**£375,000 TO BE ADVISED**

**Forest Hill | | [foresthill@winkworth.co.uk](mailto:foresthill@winkworth.co.uk)**





### DESCRIPTION:

Set within a charming period building, this beautifully presented first-floor apartment offers a perfect mix of character and contemporary living. Featuring high ceilings, large windows, and stylish modern finishes.

Located in a desirable neighbourhood with easy access to local amenities and transport links.

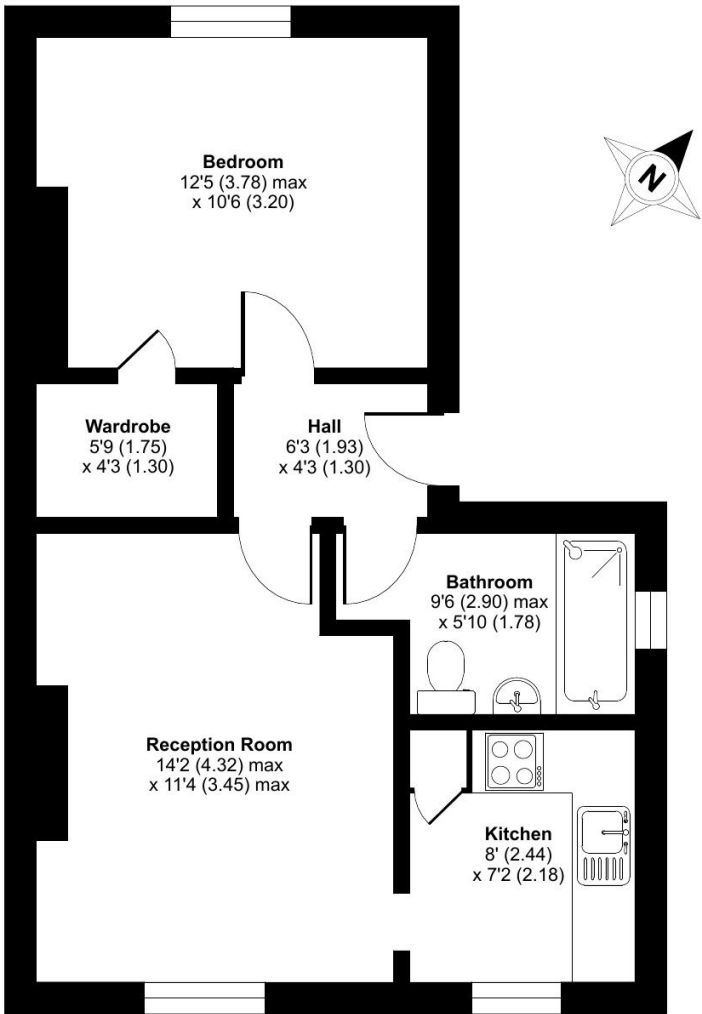






Devonshire Road, London, SE23

Approximate Area = 462 sq ft / 43 sq m  
For identification only - Not to scale



FIRST FLOOR

Floor plan produced in accordance with RICS Property Measurement Standards incorporating International Property Measurement Standards (IPMS2 Residential). © n/checon 2025. Produced for Winkworth Forest Hill and New Cross. REF: 1327559

This floorplan is for illustration purposes only and is not to scale. The position and size of doors, windows, appliances and other features are approximate.

Tenure: Share of freehold

Score	Energy rating	Current	Potential
92+	A		
81-91	B		
69-80	C	73 C	78 C
55-68	D		
39-54	E		
21-38	F		
1-20	G		