



NUTBOURNE STREET, QUEENS PARK, LONDON, W10

£750,000 FREEHOLD

WINKWORTH ARE PLEASED TO PRESENT TO MARKET THIS LOVELY FREEHOLD COTTAGE WITH SOUTH FACING GARDEN, PERFECTLY SITUATED ON NUTBOURNE STREET IN THE QUEENS PARK AVENUES.

Kensal & Queens Park | 0208 960 4947 | kensalrise@winkworth.co.uk

Winkworth

winkworth.co.uk

See things differently



LOCATION:

Nutbourne Street is conveniently located for transport links at Queens Park on the Bakerloo and Overground lines, as well as regular buses along Kilburn Lane or the No. 18 on Harrow Road to take you straight to Euston.

The amenities of both Chamberlayne Road and Salusbury Road are also only a short walk away, as well as the popular Jaego's House on Harrow Road.





DESCRIPTION:

This lovely and rarely available freehold cottage is offered in excellent condition and with no upper chain. Accommodation comprises of a double reception and dining room with period feature fireplace and stunning wood floors. The kitchen is modern with stone counters and integrated appliances. The ceilings have also been vaulted with skylights added. The garden is directly accessible via French doors. As it is directly South facing, the garden is also a great sun trap.

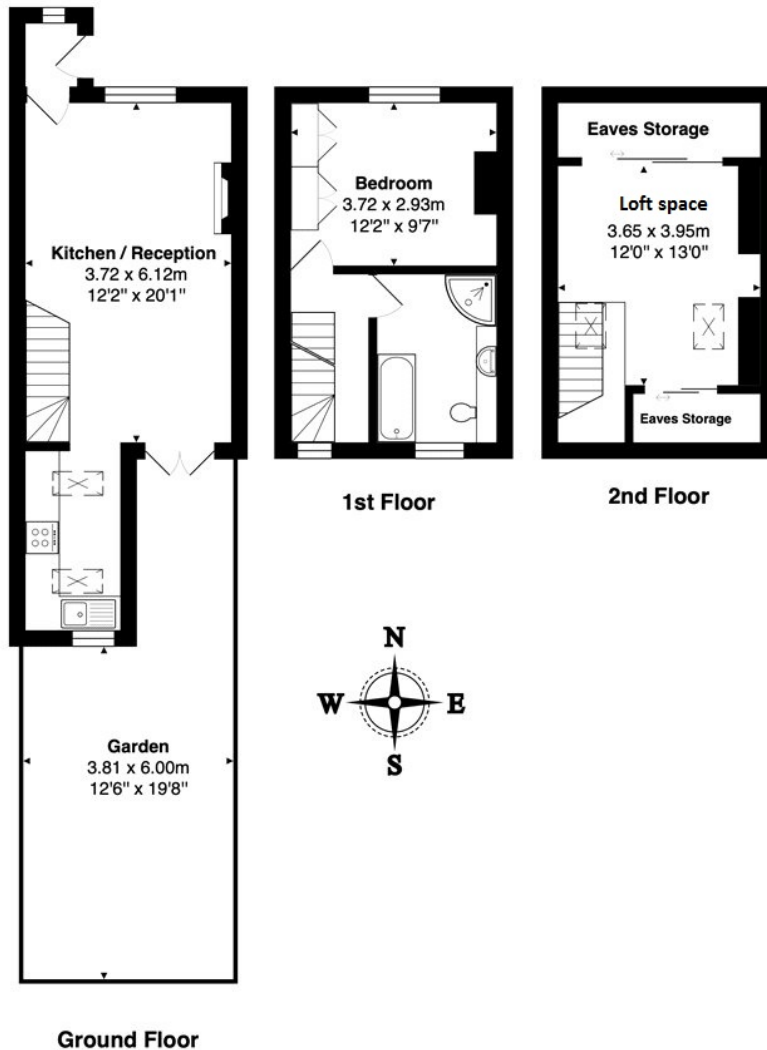
On the first floor is the principle bedroom and a four-piece tiled bathroom suite.

Finally, the loft space has been converted which is now a second room, or perfect as an office space.

There is also ample eaves storage.

Viewing of this lovely home comes highly recommended.

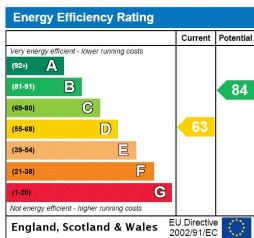
Winkworth



Total Area: 74.9 m² ... 806 ft² (excluding garden)

All measurements are approximate and for display purposes only

This floorplan is for illustration purposes only and is not to scale. The position and size of doors, windows, appliances and other features are approximate.



Kensal & Queens Park | 0208 960 4947 | kensalrise@winkworth.co.uk

Winkworth

winkworth.co.uk

See things differently

winkworth wishes to inform prospective buyers and tenants that these particulars are a guide and act as information only. All our details are given in good faith and believed to be correct at the time of printing but they don't form part of an offer or contract. No winkworth employee has authority to make or give any representation or warranty in relation to this property. All fixtures and fittings, whether fitted or not are deemed removable by the vendor unless stated otherwise and room sizes are measured between internal wall surfaces, including furnishings.