



**RIVERSIDE HOUSE, READING, BERKSHIRE, RG1 6BH**  
**£1,500 PER MONTH FURNISHED**

## **TWO DOUBLE BEDROOM FIRST FLOOR APARTMENT LOCATED IN READING TOWN CENTRE**

Reading | 0118 4022 300 | [reading@winkworth.co.uk](mailto:reading@winkworth.co.uk)

**Winkworth**

for every step...

[winkworth.co.uk](http://winkworth.co.uk)





## DESCRIPTION:

First floor two bedroom apartment located in Reading Town Centre next to the Oracle Shopping Centre. Accommodation comprises two double bedrooms, an open plan living/dining room leading into the kitchen, two bathrooms including an en suite to the master and a balcony off the living area. Available now. Furnished.

\*Awaiting EPC

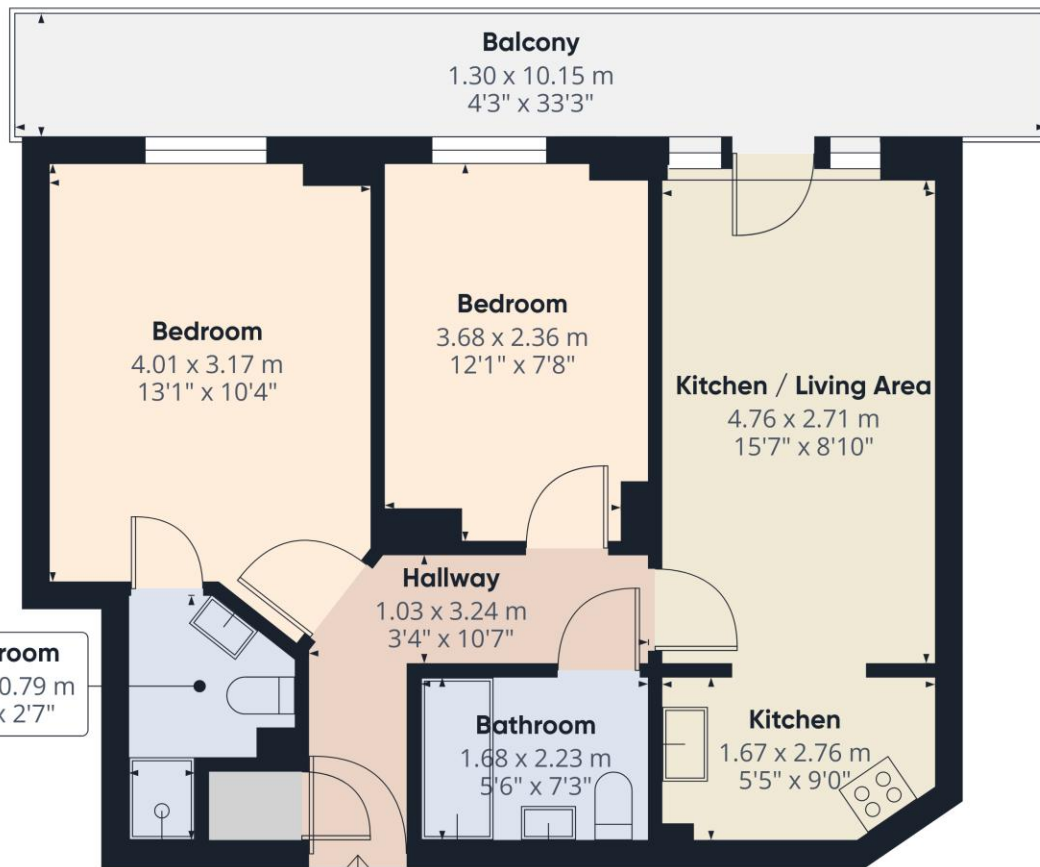
## AT A GLANCE

- Two bedroom apartment
- First floor
- Two bathrooms
- Council tax band D
- No parking
- Available now
- Furnished









**Winkworth**

**Approximate total area<sup>(1)</sup>**

52.9 m<sup>2</sup>  
569 ft<sup>2</sup>

**Balconies and terraces**

13 m<sup>2</sup>  
140 ft<sup>2</sup>

(1) Excluding balconies and terraces

Calculations reference the RICS IPMS 3C standard. Measurements are approximate and not to scale. This floor plan is intended for illustration only.

GIRAFFE 360

This floorplan is for illustration purposes only and is not to scale. The position and size of doors, windows, appliances and other features are approximate.

**Deposit:** £1,730.77

**Holding Deposit:** £346,15

**Council Tax Band:** D

Where no figures are shown, we have been unable to ascertain the information. All figures that are shown were correct at the time of printing.

Reading | 0118 4022 300 | [reading@winkworth.co.uk](mailto:reading@winkworth.co.uk)

**Winkworth**

**for every step...**

[winkworth.co.uk](http://winkworth.co.uk)

Winkworth wishes to inform prospective buyers and tenants that these particulars are a guide and act as information only. All our details are given in good faith and believed to be correct at the time of printing but they don't form part of an offer or contract. No Winkworth employee has authority to make or give any representation or warranty in relation to this property. All fixtures and fittings, whether fitted or not are deemed removable by the vendor unless stated otherwise and room sizes are measured between internal wall surfaces, including furnishings.