



## 18 Wolsingham Way RG19 3YW

**A fantastic three bedroom semi-detached house with good size living space and garden, in a quiet cul-de-sac close to town.**

The accommodation is well-presented with modern decor and fittings, neutral colour schemes and engineered oak flooring throughout.

The ground floor offers open living space through a sitting room and a kitchen/dining room overlooking the garden. Underneath the stairs there is a great storage cupboard under the stairs. Upstairs is the family bathroom and three bedrooms. UPVC double-glazing and gas central heating to radiators feature throughout the house.

The garden is mainly patio keeping it low maintenance. Behind the garage is further space, perfect for being used as a more secluded outside dining area. Just off from the garden is the side access to the garage. The garage then leads to the driveway which offer several parking spaces.

Ideally located for walking to the town and railway station, this property falls into the Kennet School catchment and sits close to outside recreational space.

Ultrafast broadband available with no known mobile signal issues.

EPC C  
West Berkshire Council Tax Band C



**Winkworth**

## AT A GLANCE

714 sqft / 66 sqmt

Sitting Room

Kitchen

Dining Room

Three Bedrooms

Family Bathroom

Garden

Driveway

## UTILITIES

Mains Gas

Mains Electric

Mains Drainage

## SITUATION

Ideally located for walking to the town and railway station, this property falls into the Kennet School catchment and sits close to outside recreational space.

## DIRECTIONS

What3words://roofs.wings.season

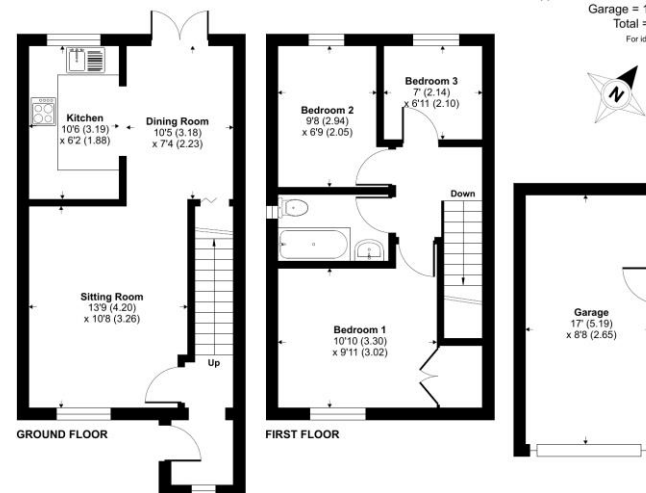
### Wolsingham Way, Thatcham, RG19

Approximate Area = 714 sq ft / 66.3 sq m

Garage = 148 sq ft / 13.7 sq m

Total = 862 sq ft / 80 sq m

For identification only - Not to scale



Floor plan produced in accordance with RICS Property Measurement 2nd Edition, incorporating International Property Measurement Standards (IPMS Residential). Produced for Winkworth. REF: 13348975. © richcom 2025.

Winkworth



## Newbury Office

43 Northbrook Street, Newbury, Berkshire RG14 1DT

01635 552552 | [newbury@winkworth.co.uk](mailto:newbury@winkworth.co.uk)

[winkworth.co.uk/newbury](https://www.winkworth.co.uk/newbury)

# Winkworth

See things differently.