

HANOVER ROAD, NW10
£2,750 PER MONTH PART FURNISHED

GROUND FLOOR TWO BED GARDEN FLAT TO THE NORTH OF QUEENS PARK

Kensal Rise & Queens Park | 0208 960 4947 | kensalrise@winkworth.co.uk

Winkworth

for every step...

winkworth.co.uk



DESCRIPTION:

Set over the ground floor, this two bedroom flat offers a spacious living space to the front, two good size double bedrooms, a modern bathroom and rear eat in kitchen leading onto the 50ft garden. Additional features includes wooden flooring throughout.

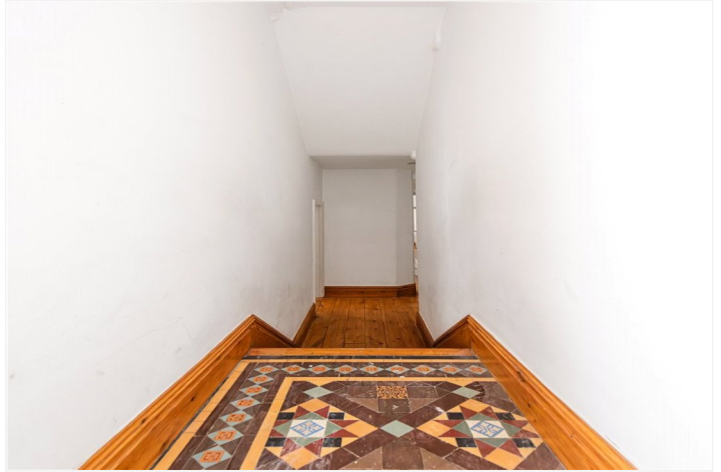
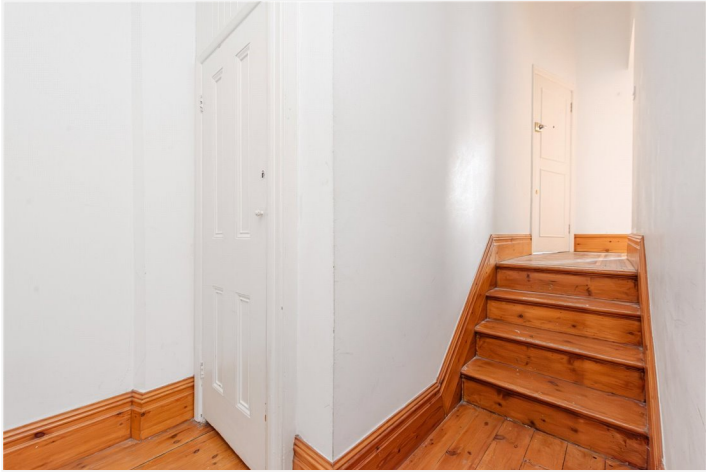
Offered part unfurnished and available in 31/07/25

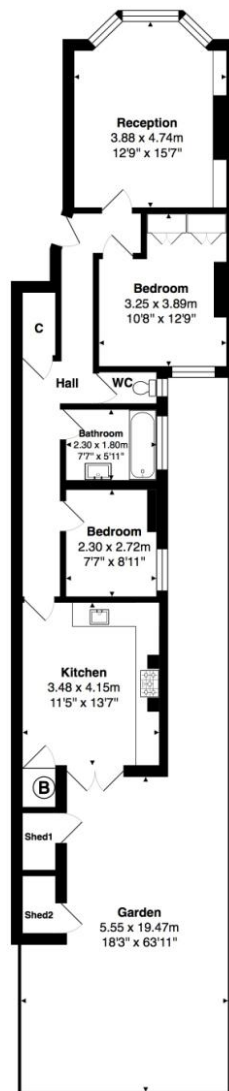
Council tax - (Band D)

Ward - Brondesbury Park

Controlled Parking Zone

8.00 am - 6.30 pm Mon. - Fri.



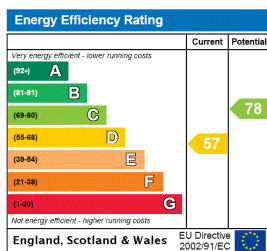


Ground Floor

Total Area: 73.7 m² ... 793 ft² (excluding shed2, garden, shed1)

All measurements are approximate and for display purposes only

This floorplan is for illustration purposes only and is not to scale. The position and size of doors, windows, appliances and other features are approximate.



Deposit: 5 weeks rent

Holding Deposit: 1 weeks rent

Council Tax Band: D

Where no figures are shown, we have been unable to ascertain the information. All figures that are shown were correct at the time of printing.

Winkworth

Kensal Rise & Queens Park | 0208 960 4947 | kensalrise@winkworth.co.uk

for every step...

[winkworth.co.uk](https://www.winkworth.co.uk)

Winkworth wishes to inform prospective buyers and tenants that these particulars are a guide and act as information only. All our details are given in good faith and believed to be correct at the time of printing but they don't form part of an offer or contract. No Winkworth employee has authority to make or give any representation or warranty in relation to this property. All fixtures and fittings, whether fitted or not are deemed removable by the vendor unless stated otherwise and room sizes are measured between internal wall surfaces, including furnishings.