



SUTTON COURT ROAD, W4  
**£650,000 TO BE ADVISED**

## TWO BEDROOM GROUND FLOOR FLAT WITH PRIVATE GARDEN AND PRIVATE ENTRANCE

Chiswick | 020 8994 7096 | [chiswick@winkworth.co.uk](mailto:chiswick@winkworth.co.uk)

**Winkworth**

for every step...

[winkworth.co.uk](http://winkworth.co.uk)



Winkworth are pleased to present this newly refurbished double 2 bedroom garden flat with own private entrance. The accommodation comprises a grand entrance hallway which has been used as a dining area leading onto the fully fitted kitchen including all built in appliances. The property further benefits from a family bathroom and a stunning 17ft reception room with doors opening onto the west facing private garden. The property has recently been refurbished with a brand new boiler and the property has recently been completely rewired throughout.

Sutton Court Road is located south of Chiswick High Road within easy reach of the local shops and restaurants of Fauconberg Road and Chiswick High Road and is also close to the open spaces of Chiswick House and Grounds and the River Thames. Chiswick Train Station is a short distance away.



**Winkworth**

for every step...

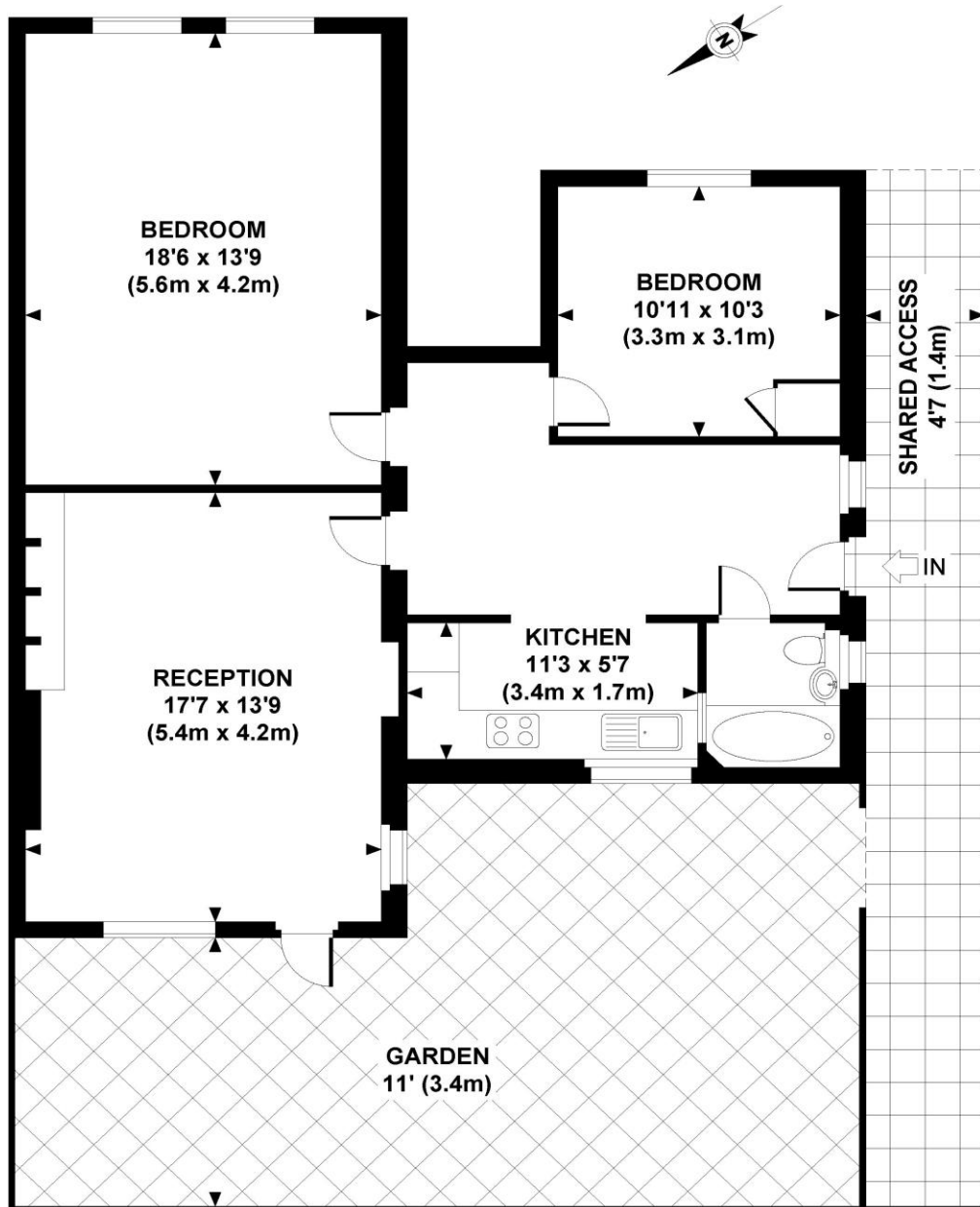


**Winkworth**

for every step...

[winkworth.co.uk](http://winkworth.co.uk)

## Sutton Court Road, W4



### GROUND FLOOR

**APPROXIMATE GROSS INTERNAL AREA 886 SQ FT / 82.3 SQ M**

Whilst every attempt has been made to ensure the accuracy of this floor plan; measurements of door, windows, rooms and all other items are approximate. No responsibility is taken for any error, omission or mis-statement. This floor plan is for illustrative purposes only, and should be treated as such.

This floorplan is for illustration purposes only and is not to scale. The position and size of doors, windows, appliances and other features are approximate.

Chiswick | 020 8994 7096 | [chiswick@winkworth.co.uk](mailto:chiswick@winkworth.co.uk)

# Winkworth

for every step...

[winkworth.co.uk](http://winkworth.co.uk)

Winkworth wishes to inform prospective buyers and tenants that these particulars are a guide and act as information only. All our details are given in good faith and believed to be correct at the time of printing but they don't form part of an offer or contract. No Winkworth employee has authority to make or give any representation or warranty in relation to this property. All fixtures and fittings, whether fitted or not are deemed removable by the vendor unless stated otherwise and room sizes are measured between internal wall surfaces, including furnishings.