



Crownstone Court, London, SW2

£370,000 *Leasehold*



KEY FEATURES

- Purpose Built Mansion Block
- Fourth Floor
- Reception Room
- Smart Kitchen
- Two Bedrooms
- Shower Room
- Ample Storage

This is an excellent opportunity to purchase this two double bedroom flat set on the fourth floor (with lift) of a purpose-built private mansion block. The property is ideally located on a quiet residential road within close proximity of Brixton's amenities (including the tube station, Zone 2) and within walking distance of the lovely Brockwell Park.

This fourth floor flat comprises of: a good size, neutrally decorated reception room, two double bedrooms, a modern metro tiled shower room with WC and a smart fitted kitchen with new Bosch appliances and a wooden worktop. The property is in good decorative order with storage and double glazing throughout. The service charges include heating, hot water and building insurance and benefits from a lift, a long lease and is sold with no onward chain.

Herne Hill

0207 501 8950 | hernehill@winkworth.co.uk

Winkworth

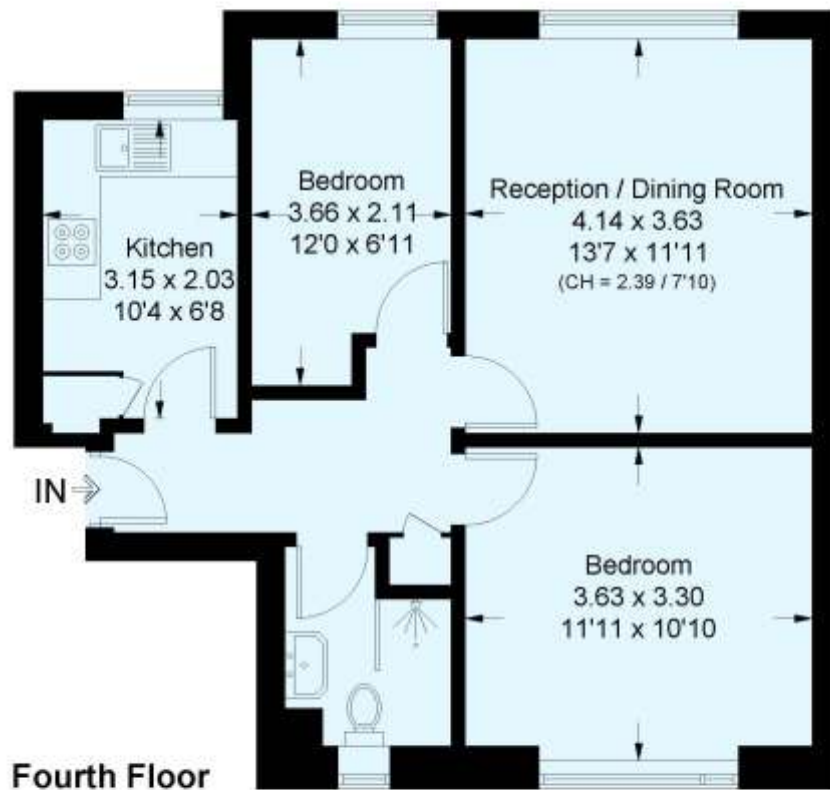
for every step...



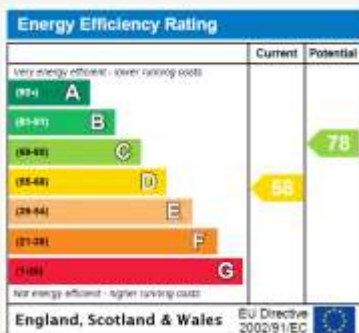


Crownstone Court, SW2

Approximate Floor Area = 53.4 sq m / 575 sq ft
Including Limited Use Area (1 sq m / 11 sq ft)



This plan is for layout guidance only. Not drawn to scale unless stated. Windows and door openings are approximate. Whilst every care is taken in the preparation of this plan, please check all dimensions, shapes and compass bearings before making any decisions reliant upon them. (ID713176)



MATERIAL INFO

Tenure: Leasehold

Term: 113 years and 5 months

Service Charge: £3000 per annum

Ground Rent: £70 Annually (subject to increase)

Council Tax Band: B

EPC rating: D

Herne Hill

0207 501 8950 | hernehill@winkworth.co.uk

Winkworth

for every step...

Winkworth wishes to inform prospective buyers and tenants that these particulars are a guide and act as information only. All our details are given in good faith and believed to be correct at the time of printing but they don't form part of an offer or contract. No Winkworth employee has authority to make or give any representation or warranty in relation to this property. All fixtures and fittings, whether fitted or not are deemed removable by the vendor unless stated otherwise and room sizes are measured between internal wall surfaces, including furnishings.