



Whitlock Drive, SW19

£325,000 *Leasehold*



MATERIAL INFO

Tenure: Leasehold

Term: 179 years

Service Charge: £1,630 per annum

Ground Rent: Peppercorn

Council Tax Band: C

KEY FEATURES

- Two generously sized bedrooms
- Large 17'5" reception room with access to private balcony
- Communal Garden
- Modern, well-equipped kitchen
- Contemporary bathroom and separate WC
- 0.3 miles from Southfields station



Southfields

020 8877 1000 | southfields@winkworth.co.uk

Winkworth

for every step...



DESCRIPTION

Situated in William Harvey House on Whitlock Drive, this well-presented two-bedroom apartment offers bright, well-proportioned living spaces and an enviable location.

The property features a spacious reception room measuring over 17ft in length, with direct access to a private balcony. The modern kitchen is smartly designed, with ample storage and worktop space.

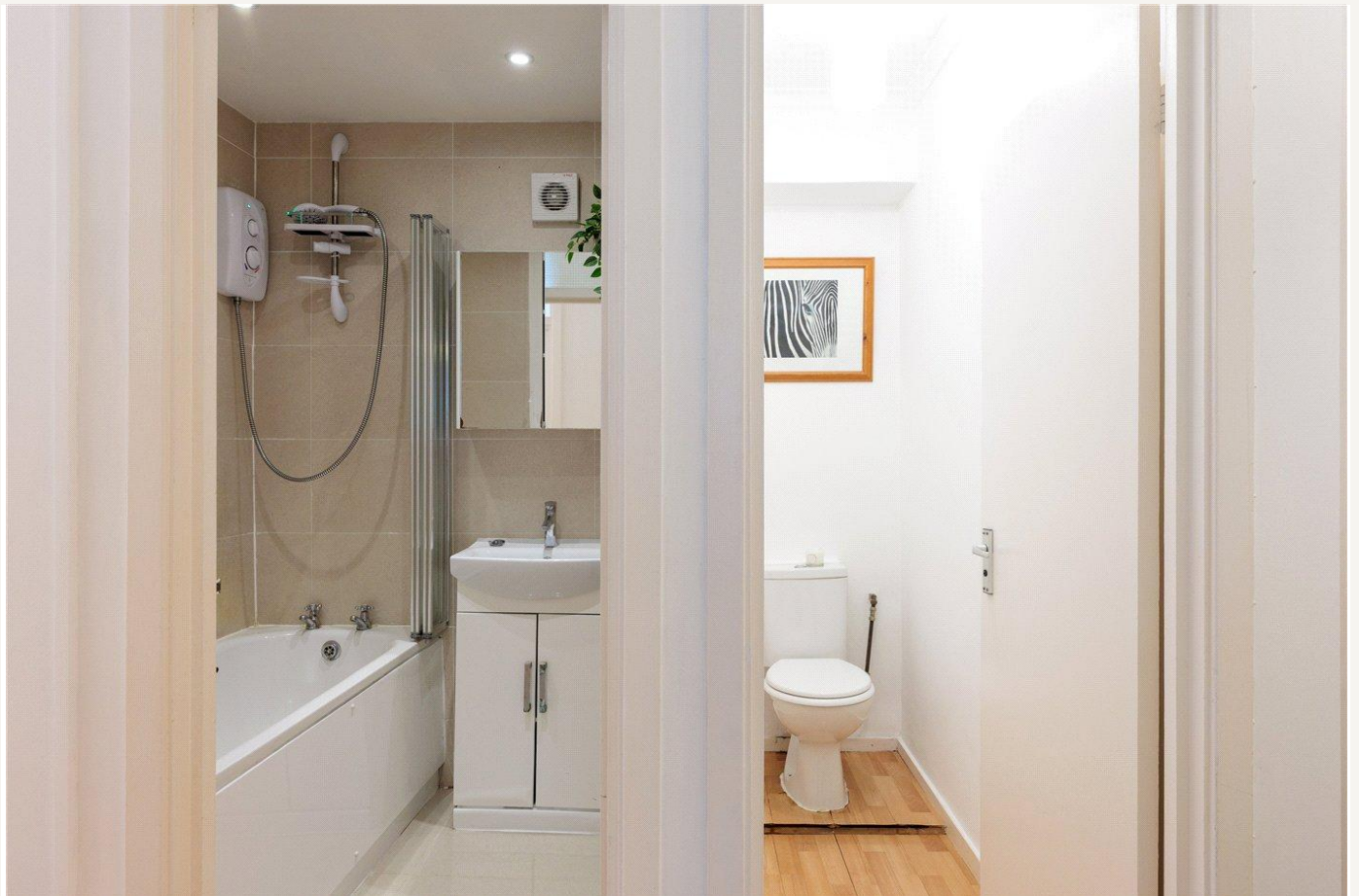
Both bedrooms are generously sized, with the principal bedroom comfortably fitting a large bed and additional furniture, while the second bedroom makes for a great guest room, home office, or nursery. A neatly tiled bathroom and separate WC add to the home's practicality.

Located on the sixth floor, the apartment benefits from plenty of natural light and far-reaching views. Residents also enjoy access to a well-maintained communal garden, providing a peaceful outdoor space to relax and unwind.

Whitlock Drive offers excellent transport links, with easy access to Southfields, Earlsfield, and Wimbledon, as well as local parks, shops, and cafés.

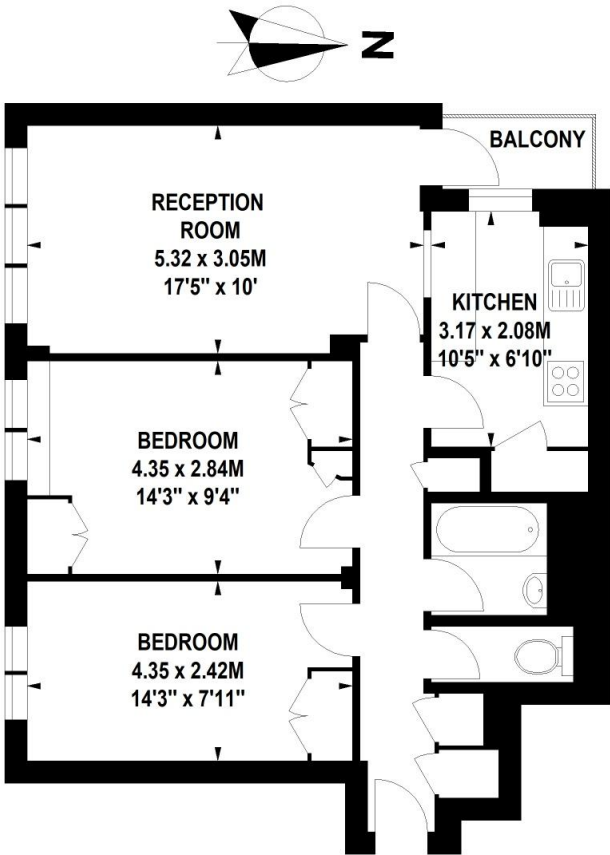
LOCATION

Set in the sought-after SW19 postcode, William Harvey House offers the best of both worlds – a peaceful residential setting with superb city connections. Southfields Underground is close by, whisking you into Central London in minutes. Stroll to local cafés, restaurants, and shops, or unwind in nearby Wimbledon Park and King George's Park. Wimbledon Village, with its boutique charm and world-famous tennis, is just a short journey away.



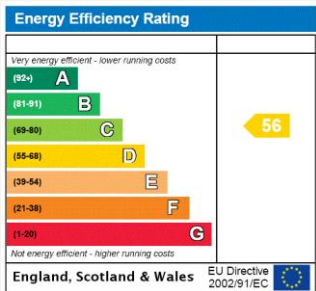
William Harvey House, Whitlock Drive, SW19

Approximate Gross Internal Area 60 sq.m / 646 sq. ft



Sixth Floor

Floor Plan produced for WINKWORTH by Mays Floorplans © . Tel 020 3397 4594
Illustration for identification purposes only, not to scale
All measurements are maximum, and include wardrobes and window bays where applicable



Where no figures are shown, we have been unable to ascertain the information. All figures that are shown were correct at the time of printing.

Southfields
020 8877 1000 | southfields@winkworth.co.uk

Winkworth
for every step...

Winkworth wishes to inform prospective buyers and tenants that these particulars are a guide and act as information only. All our details are given in good faith and believed to be correct at the time of printing but they don't form part of an offer or contract. No Winkworth employee has authority to make or give any representation or warranty in relation to this property. All fixtures and fittings, whether fitted or not are deemed removable by the vendor unless stated otherwise and room sizes are measured between internal wall surfaces, including furnishings.