

ALBION YARD, WHITECHAPEL ROAD, E1  
**£475,000 LEASEHOLD**

**A WONDERFULLY BRIGHT AND SPACIOUS  
ONE BEDROOM APARTMENT WITH HIGH  
CEILINGS WITHIN A CONVERTED BREWERY**

Shoreditch | 020 7749 7650 | [shoreditch@winkworth.co.uk](mailto:shoreditch@winkworth.co.uk)

**Winkworth**

*[winkworth.co.uk](http://winkworth.co.uk)*

See things differently





## DESCRIPTION:

Being offered chain free, a fantastic Grade II Listed period property situated within a converted Brewery in the heart of Whitechapel. Located on the 2nd floor, this apartment is flooded with natural light featuring high ceilings, sash windows and two unique mezzanines over the bedroom and the living room. This property comprises of large storage cupboard with washing machine and tumble dryer, a generous sized reception room, separate fitted kitchen, and a loft suitable for a working or dressing area. The development also boasts an impressive communal roof terrace with views of the city.

The property is in an enviable location being a stone's throw from Whitechapel Station (Crossrail, District, Hammersmith & City, East London lines). You are also within a short distance to Aldgate, Aldgate East and Liverpool Street underground stations and Shadwell DLR and Cambridge Heath stations, providing unrivalled access across the City and beyond. In addition, you have a vast range of local amenities on your doorstep including Brick Lane, Spitalfields and Whitechapel markets with an abundance of boutique shops, cafes, bars and restaurants, as well as a Sainsbury's Superstore.

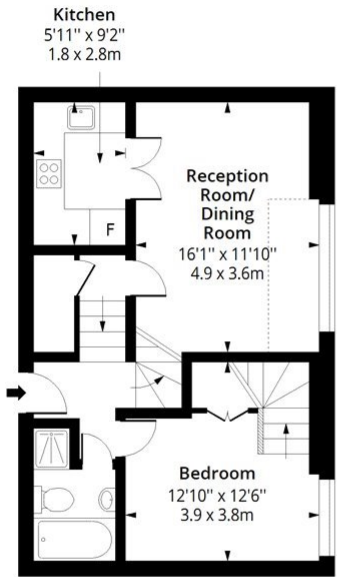
**Winkworth**



Winkworth

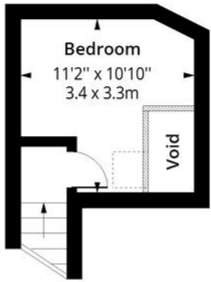
# Albion Yard, Whitechapel Road, E1

Approx. Gross Internal Area 729 Sq Ft - 67.72 Sq M



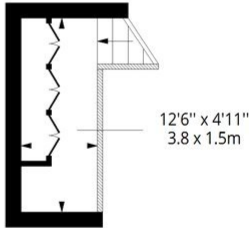
## Second Floor

Floor Area 543 Sq Ft - 50.44 Sq M



## Mezzanine

Floor Area 117 Sq Ft - 10.87 Sq M

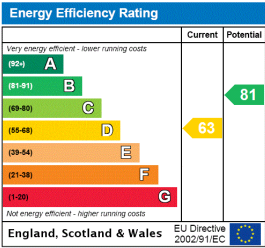


## Loft

Floor Area 69 Sq Ft - 6.41 Sq M

Floor plan is for illustrative purposes only and is not to scale. Every attempt has been made to ensure the accuracy of the floor plan shown, however all measurements, fixtures, fittings and data shown are an approximate interpretation for illustrative purposes only.  
lpaplus.com

This floorplan is for illustration purposes only and is not to scale. The position and size of doors, windows, appliances and other features are approximate.



Shoreditch | 020 7749 7650 | shoreditch@winkworth.co.uk



winkworth.co.uk

See things differently

Winkworth wishes to inform prospective buyers and tenants that these particulars are a guide and act as information only. All our details are given in good faith and believed to be correct at the time of printing but they don't form part of an offer or contract. No Winkworth employee has authority to make or give any representation or warranty in relation to this property. All fixtures and fittings, whether fitted or not are deemed removable by the vendor unless stated otherwise and room sizes are measured between internal wall surfaces, including furnishings.