



FLAT 1 COLLEGE MANOR, FARQUHAR ROAD, LONDON, SE19
£1,300 PER MONTH UNFURNISHED

**A SUPERB ONE BEDROOM FLAT TO LET WITH
 COMMUNAL GARDEN CLOSE TO THE TRIANGLE.**

Crystal Palace | 02038693222 | crystalpalace@winkworth.co.uk

Tenant Fees Apply: Details of fees for tenant referencing, tenancy agreement admin fees and renewal fees are available on the Winkworth website and the link can be found with the displayed rent for the property. Tenants should ensure they are fully conversant with these upfront fees and other costs that are involved at the outset of the tenancy before making an offer to rent and your local Winkworth office will provide written details upon request.

winkworth.co.uk

Winkworth

for every step...



DESCRIPTION:

A fantastic one bedroom ground floor flat to let from 18th October 2022, situated on this desirable road with superb access to Crystal Palace Triangle, Park and Station.

This apartment benefits from a spacious living area and double bedroom as well as a modern kitchen and bathroom. The flat also benefits from a communal garden to the rear.

The flat is well situated with a short walk to Crystal Palace Triangle with its array of trendy bars, cinema, restaurants and shops. Perfect for a first time buyer or those looking for a property near to an artistic and vibrant place to live. The nearest transport links would be nearby at Crystal Palace and Gipsy Hill, just a short walk away.

Offered unfurnished.

Winkworth

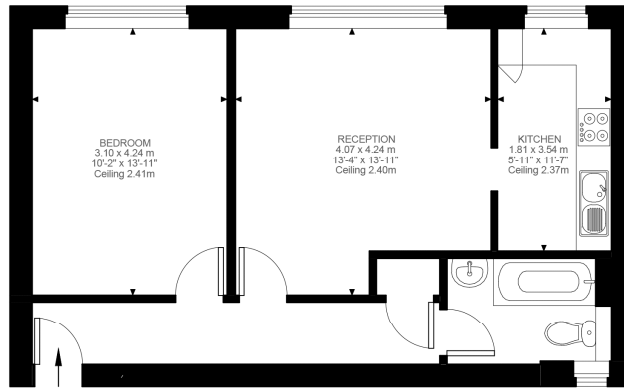
for every step...



Winkworth

for every step...

z ← → s

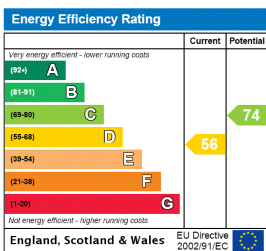


Lower Ground Floor
543 ft²

College Manor, SE19
Approximate Gross Internal Area
50.46 SQ.M / 543 SQ.FT

Illustration for identification purposes only. Not to scale.
Floor Plan Drawn According To RICS Guidelines.

This floorplan is for illustration purposes only and is not to scale. The position and size of doors, windows, appliances and other features are approximate.



Winkworth
for every step...

Crystal Palace | 02038693222 | crystalpalace@winkworth.co.uk

winkworth.co.uk

Winkworth wishes to inform prospective buyers and tenants that these particulars are a guide and act as information only. All our details are given in good faith and believed to be correct at the time of printing but they don't form part of an offer or contract. No Winkworth employee has authority to make or give any representation or warranty in relation to this property. All fixtures and fittings, whether fitted or not are deemed removable by the vendor unless stated otherwise and room sizes are measured between internal wall surfaces, including built-in furnishings.