



KINFAUNS ROAD, SW2
£1,700 PER MONTH PART FURNISHED

A BRIGHT AND AIRY TWO BEDROOM FIRST FLOOR VICTORIAN CONVERSION FLAT BY TULSE HILL STATION (THAMESLINK)

Herne Hill | 020 7501 8950 | hernehill@winkworth.co.uk

Winkworth

for every step...

winkworth.co.uk



DESCRIPTION:

Set within a handsome brick-fronted Victorian semi-detached house, this smart first floor flat is located within a short distance of Tulse Hill station (Thameslink) which has an excellent, speedy service into the City and West End. There is a bright open-plan kitchen/ reception room with wooden floors and a large sash window bay and high ceilings. The fitted kitchen has white high gloss modern units with granite worktops, a fitted oven and hob and includes a washer-dryer. There is a smart modern bathroom with a large walk-in shower, two double bedrooms with sash windows and high level fitted storage. With wooden flooring and fitted carpets and a cream/white colour scheme throughout, this flat would suit a professional couple or two sharers. Kinfauns Road is a quiet residential street off the South Circular Road and has easy access to Brockwell Park and Lido, Dulwich, Herne Hill, Brixton and Clapham. Available: 30th November 2022

AT A GLANCE

- Period conversion flat
- Excellent location
- Close to Tulse Hill Station (Thameslink)
- Two double bedrooms
- Modern walk-in shower
- Fitted kitchen
- Reception room
- Part-Furnished
- Available 30th November 2022





Kinfauns Road, SW2

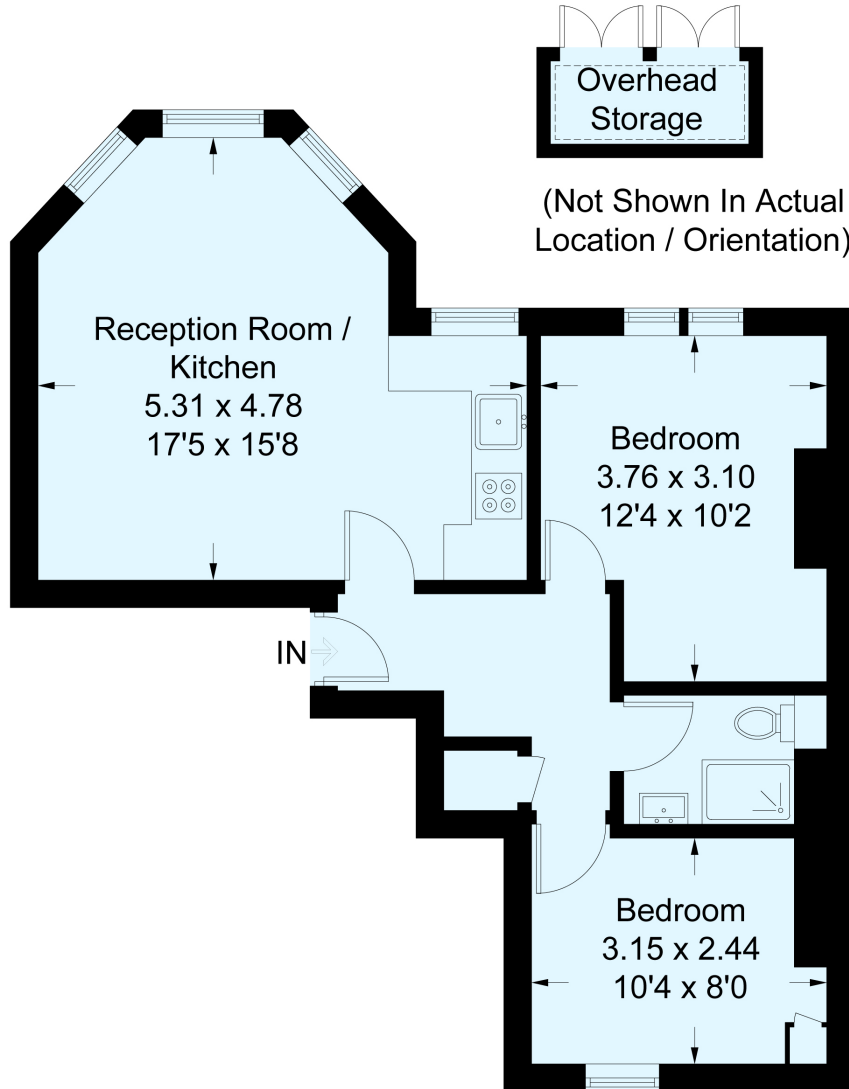
Approximate Gross Internal Area = 50.0 sq m / 538 sq ft

Overhead Storage = 1.9 sq m / 20 sq ft

Total = 51.9 sq m / 558 sq ft

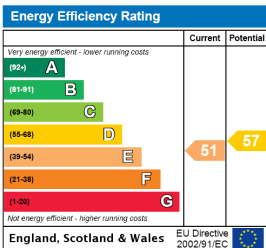


= Reduced headroom below 1.5m / 5'0



This plan is for layout guidance only. Not drawn to scale unless stated. Windows and door openings are approximate. Whilst every care is taken in the preparation of this plan, please check all dimensions, shapes and compass bearings before making any decisions reliant upon them. (ID267580)

This floorplan is for illustration purposes only and is not to scale. The position and size of doors, windows, appliances and other features are approximate.



Herne Hill | 020 7501 8950 | hernehill@winkworth.co.uk



for every step...

winkworth.co.uk

Winkworth wishes to inform prospective buyers and tenants that these particulars are a guide and act as information only. All our details are given in good faith and believed to be correct at the time of printing but they don't form part of an offer or contract. No Winkworth employee has authority to make or give any representation or warranty in relation to this property. All fixtures and fittings, whether fitted or not are deemed removable by the vendor unless stated otherwise and room sizes are measured between internal wall surfaces, including furnishings.