



Lydhurst Avenue, SW2

£575,000 *Leasehold*



KEY FEATURES

- Turnkey split-level Victorian maisonette
- Reception room
- Recently renovated kitchen/diner
- Three bedrooms
- Modern Bathroom
- Prime Streatham Hill Location
- In excess of 1020 Sq. Ft.
- Period features throughout

Located in the sought-after Leigham Court conservation area close to Streatham Hill station (off the ABC roads) we are delighted to offer for sale this large split-level first and upper floor Victorian maisonette with accommodation in excess of 1,020 sq.ft. including three bedrooms and a kitchen/diner.

The spacious accommodation comprises: own front door to street leading up to a central entrance hallway with a newly renovated kitchen/diner to the rear with plenty of natural light, a modern bathroom with bath, shower, wash hand basin, WC and heated towel rail, two bedrooms (one double and a single room/study) and a reception room to the front with sash windows, fireplace surround and high ceilings. The stairs lead up to the top floor where there is a further large double bedroom with dormer window to the rear and plenty of useful eaves storage space.

This charming period home is set within the sought-after Leigham Court conservation area of Streatham Hill close to Hillside Gardens, Tooting Commons and Brockwell Park. It is in an attractive and quiet residential neighbourhood with good transport links from Streatham Hill and Tulse Hill, and well placed for access to Brixton, Balham, Dulwich & Clapham.

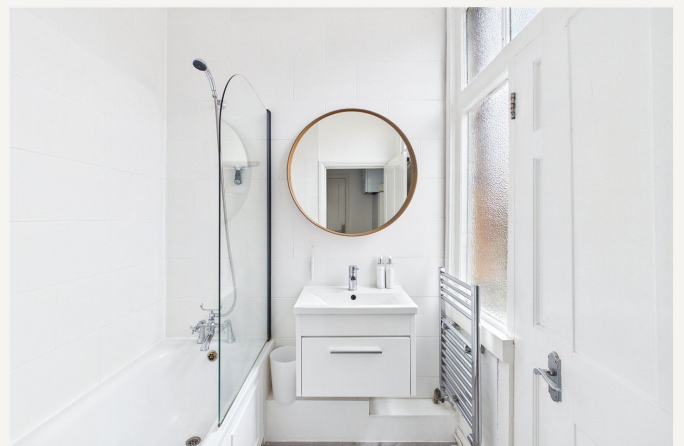
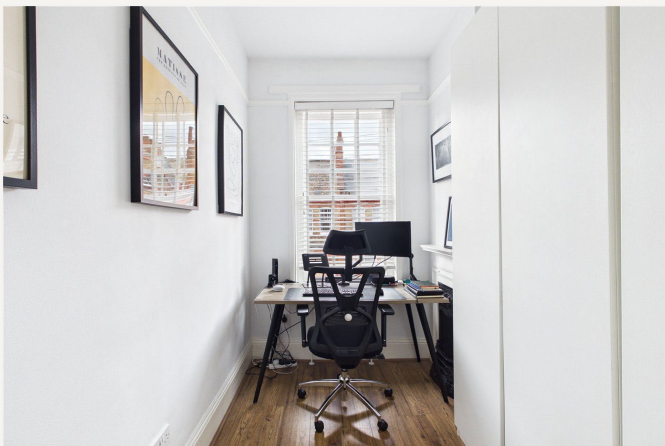
Streatham

020 8769 6699 | streatham@winkworth.co.uk

Winkworth

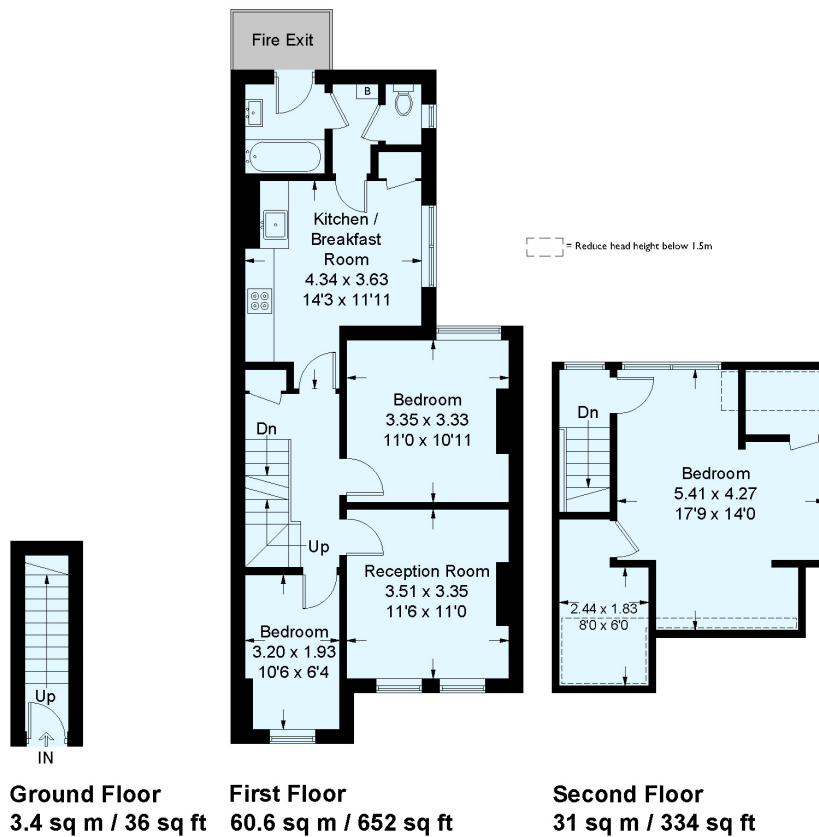
for every step...





Lydhurst Avenue, SW2

Approximate Area = 95 sq m / 1022 sq ft
Limited use Area = 6.1 sq m / 47 sq ft



This plan is for layout guidance only. Not drawn to scale unless stated. Windows and door openings are approximate. Whilst every care is taken in the preparation of this plan, please check all dimensions, shapes and compass bearings before making any decisions reliant upon them. (ID585955)

Score	Energy rating	Current	Potential
92+	A		
81-91	B		
69-80	C		75 C
55-68	D	65 D	
39-54	E		
21-38	F		
1-20	G		

MATERIAL INFO

Tenure: Leasehold

Term: 88 year and 11 months

Service Charge: £932.20 per annum (estimated)

Ground Rent: £10 Annually

Council Tax Band: D

EPC rating: D

Streatham

020 8769 6699 | streatham@winkworth.co.uk

Winkworth

for every step...

Winkworth wishes to inform prospective buyers and tenants that these particulars are a guide and act as information only. All our details are given in good faith and believed to be correct at the time of printing but they don't form part of an offer or contract. No Winkworth employee has authority to make or give any representation or warranty in relation to this property. All fixtures and fittings, whether fitted or not are deemed removable by the vendor unless stated otherwise and room sizes are measured between internal wall surfaces, including furnishings.