



CLAPTON SQUARE, LONDON, E5
£635,000 LEASEHOLD

A BRIGHT AND SPACIOUS TWO BEDROOM, TWO BATHROOM APARTMENT WITH A PRIVATE BALCONY ON CLAPTON SQUARE

Hackney | 020 8986 4216 | hackney@winkworth.co.uk

Winkworth



DESCRIPTION:

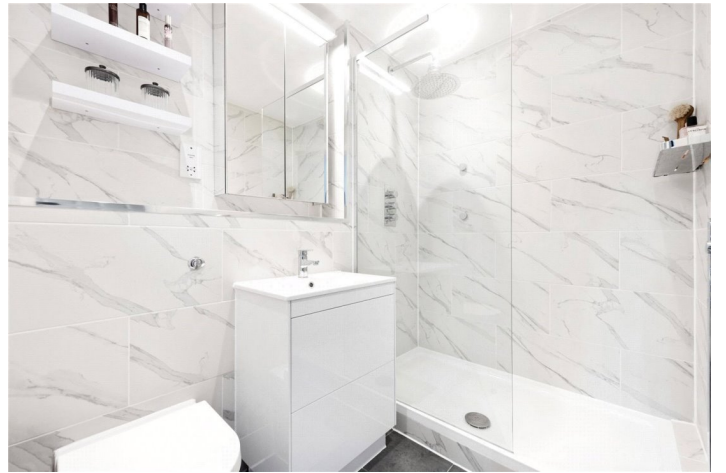
A beautiful, modern two-bedroom two-bathroom apartment situated on a picturesque square in one of Hackney's sought after spots is this lovely mock Georgian dwelling, overlooking Clapton Square. The property has been refurbished to a beautiful spec with newly installed appliances and benefits from contemporary decor & well-proportioned accommodation; comprising two double bedrooms one of which has an ensuite shower room and built in storage, a family bathroom suite, a bright and spacious west-facing reception flooded with natural light due to the amazing floor to ceiling windows, a beautiful open-plan and tastefully modernised island kitchen and private balcony.

This beautifully appointed, imposing development offers a security entry phone system and the Square itself doesn't offer any 'cut-through' for traffic ensuring the tranquillity of the spot. Transport links into the City and West End are close at hand, as well as a host of shopping and social facilities.

Note from the owner:

"Our favourite feature of the flat is the west-facing, floor to ceiling windows that make the living space bright and spacious. We love enjoying our coffee by the window looking out at the square, which offers a serene and calming view. During spring, we put up flowers on our balcony and watch them bloom through the summer. The neighbourhood is lively and vibrant, and we are spoiled by the variety of excellent coffee shops and brunch spots right on our doorstep. Plus, commuting is super convenient with the nearest station just minutes away".

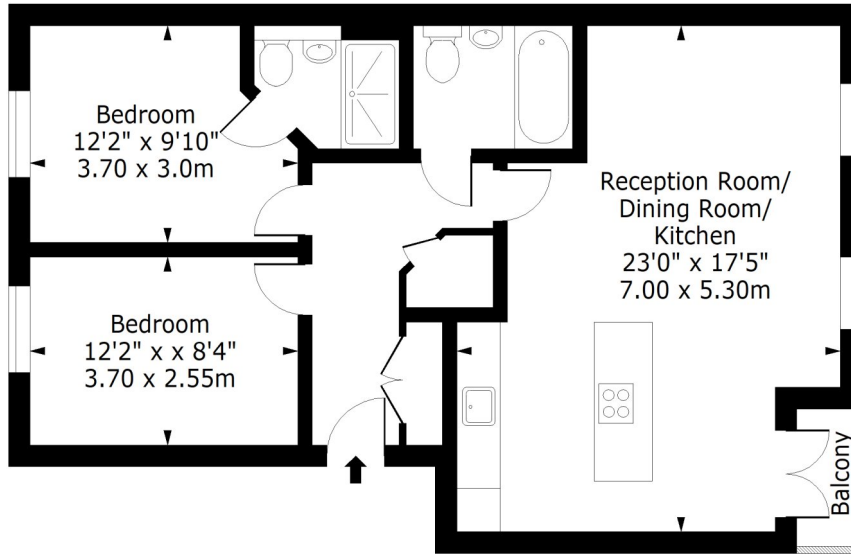
Winkworth



Winkworth

Clapton Square, E5

Approx. Gross Internal Area (Excluding Balcony) 748 Sq Ft - 69.4 Sq M

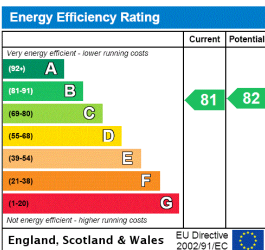


First Floor

Floor Area 748 Sq Ft - 69.4 Sq M

For Illustration Purposes Only - Not To Scale
www.lpaplus.com

This floorplan is for illustration purposes only and is not to scale. The position and size of doors, windows, appliances and other features are approximate.



Hackney | 020 8986 4216 | hackney@winkworth.co.uk



winkworth.co.uk

See things differently

Winkworth wishes to inform prospective buyers and tenants that these particulars are a guide and act as information only. All our details are given in good faith and believed to be correct at the time of printing but they don't form part of an offer or contract. No Winkworth employee has authority to make or give any representation or warranty in relation to this property. All fixtures and fittings, whether fitted or not are deemed removable by the vendor unless stated otherwise and room sizes are measured between internal wall surfaces, including furnishings.