



HALTON ROAD, ANGEL, N1
£385 PER WEEK FURNISHED

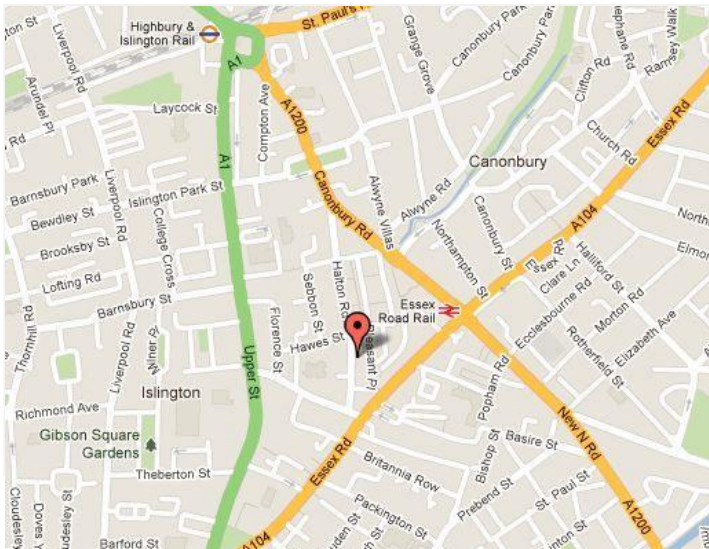
A SIZEABLE ONE BEDROOM FLAT LOCATED CLOSE TO UPPER STREET

SUMMARY:

Offering an excellent location moments from local amenities and great transport links on Upper Street is this sizeable one bedroom flat. The property offers bright living space with modern features and stylish kitchen. Situated in a gorgeous period conversion the property comprises a spacious reception room, trendy kitchen, good-sized bedroom, bathroom and private outside space. Angel tube station (Northern Line) is within a short walk and Highbury & Islington Station (Victoria Line and National Rail) is close by for links into the City and the West End.

Islington | 0207 354 2480 | islington@winkworth.co.uk

Winkworth



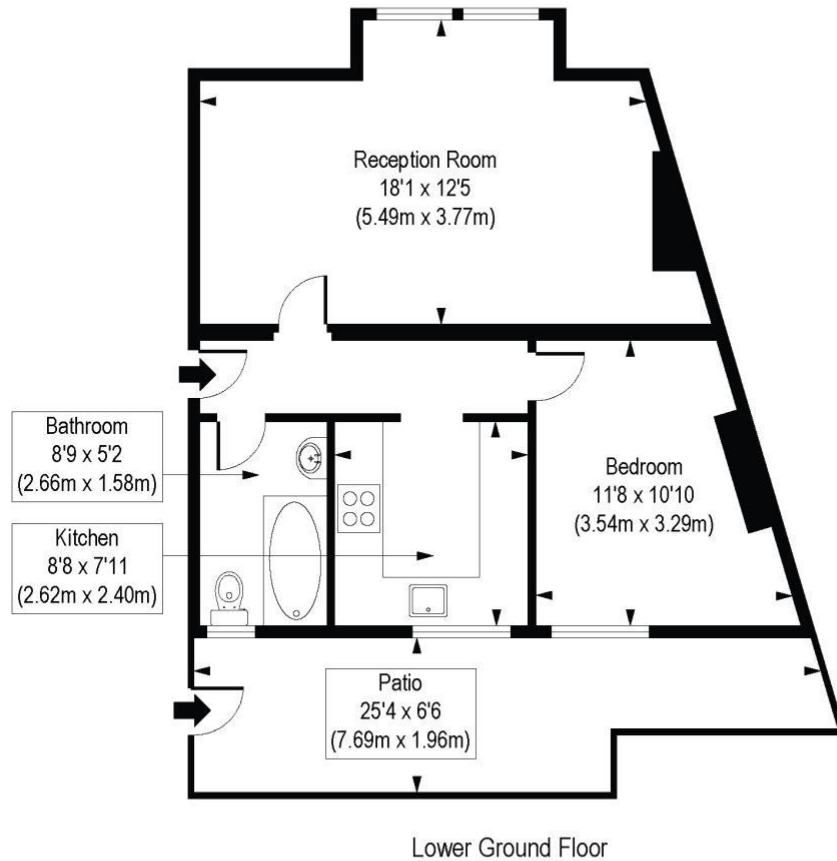
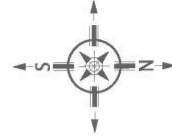


ACCOMMODATION

1 Bedroom, 1 Reception Room, 1 Bathroom,
Flat/Apartment, Patio, Period, Furnished, 490
Approx Sq Ft

Halton Road, N1

Approx. Gross Internal Floor Area 490 sq. ft / 45.48 sq. m



COMPLIANT WITHRICS CODE OF MEASURING PRACTICE Floorplan is for illustrative purposes only and is not to scale. Every attempt has been made to ensure the accuracy of the floorplan shown, however all measurements, fixtures, fittings and data shown are an approximate interpretation for illustrative purposes only. Liability for errors, omissions or mis-statement through negligence or otherwise is hereby excluded.

This floorplan is for illustration purposes only and is not to scale. The position and size of doors, windows, appliances and other features are approximate.

Islington | 0207 354 2480 | islington@winkworth.co.uk

Winkworth

winkworth.co.uk

See things differently

Winkworth wishes to inform prospective buyers and tenants that these particulars are a guide and act as information only. All our details are given in good faith and believed to be correct at the time of printing but they don't form part of an offer or contract. No Winkworth employee has authority to make or give any representation or warranty in relation to this property. All fixtures and fittings, whether fitted or not are deemed removable by the vendor unless stated otherwise and room sizes are measured between internal wall surfaces, including furnishings.