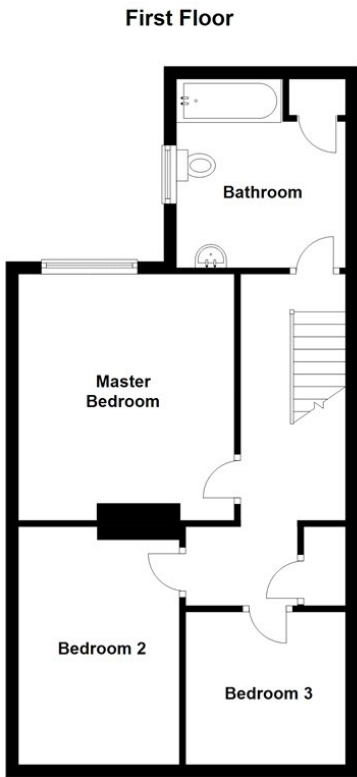
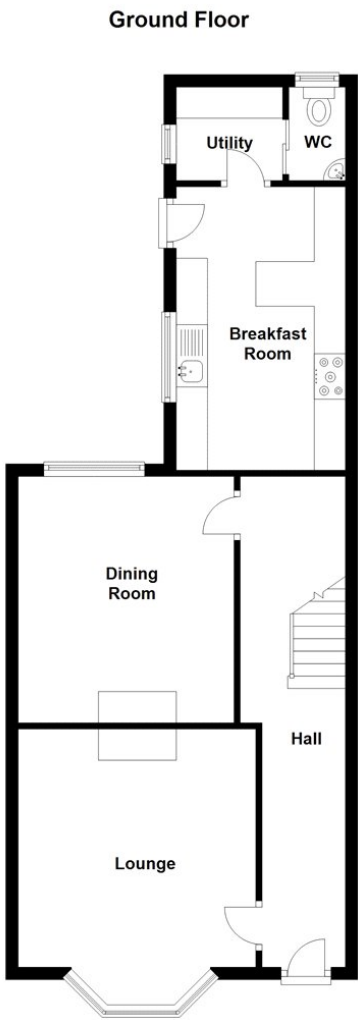
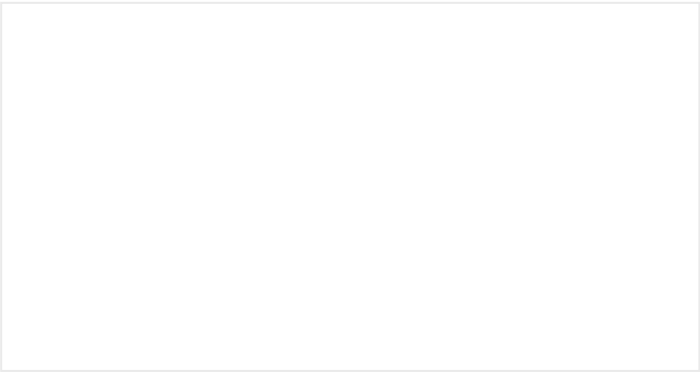


Castle Causeway, Sleaford, Lincolnshire

This floorplan is for illustration purposes only and is not to scale. The position and size of doors, windows, appliances and other features are approximate.



5 Castle Causeway, Sleaford, Lincolnshire, NG34

£190,000 Freehold

This beautifully presented Victorian terraced house is immaculate throughout, offering a perfect blend of classic features and modern updates. Located within walking distance of the town center, it provides convenient access to local amenities. The property features a spacious lounge and a separate dining room, a modern fitted kitchen with integrated appliances and a utility room.

Victorian Terraced House | Well Presented Throughout | Walking Distance of Town Centre | Lounge & Dining Room | Breakfast Kitchen & Utility Room | Three Good Size Bedrooms | Large Family Bathroom | Gas Central Heating & uPVC D/G | Enclosed Rear Yard | Viewing is Highly Advised



ACCOMMODATION

Lounge - 12'7" x 12'6" (3.84m x 3.8m)

Dining Room - 13' x 11'4" (3.96m x 3.45m)

Kitchen - 14'11" x 8'11" (4.55m x 2.72m)

Utility Room

WC

Bedroom 1 - 13' x 11'4" (3.96m x 3.45m)

Bedroom 2 - 12'7" x 8'6" (3.84m x 2.6m)

Bedroom 3 - 8'1" x 8'5" (2.46m x 2.57m)

Bathroom

The property comprises three great sized bedrooms, all of which benefit from large windows and an abundance of natural light. The master bedroom is particularly impressive, with a period-style cast iron fireplace adding a touch of character. The family bathroom has been well-maintained and features a modern suite, including a panelled bath with a mains-fed shower, making it ideal for family use.

The property also boasts a downstairs cloakroom for added convenience, while the first-floor landing offers access to a spacious attic space with power and lighting. The enclosed rear yard is a standout feature, offering a private and low-maintenance outdoor space that is fully paved and surrounded by fencing and a brick wall for additional privacy.

There is also the gas central heating and uPVC double glazing.

