



HILLCREST, WEYBRIDGE, SURREY, KT13
£2,750 PER MONTH

A B WELL; PRESENTED 4 BED TOWN HOUSE IN CENTRAL LOCATION

Weybridge | 01932 854400 | weybridge@winkworth.co.uk

Tenant Fees Apply: Details of fees for tenant referencing, tenancy agreement admin fees and renewal fees are available on the Winkworth website and the link can be found with the displayed rent for the property. Tenants should ensure they are fully conversant with these upfront fees and other costs that are involved at the outset of the tenancy before making an offer to rent and your local Winkworth office will provide written details upon request.

winkworth.co.uk

Winkworth

for every step...



DESCRIPTION:

An immaculate 4 bedroom town house situated in this very popular Weybridge location. The downstairs is the hub with a large, open plan room with kitchen, dining and seating areas opening up onto the garden. Also with 4 bedrooms and 3 bathrooms this is an great and easy house to live in. EPC C

Winkworth

for every step...

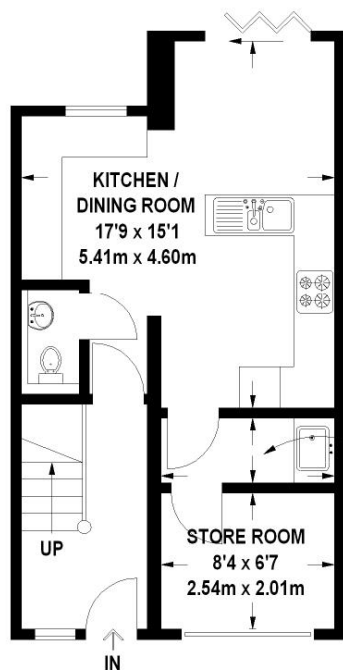


Winkworth

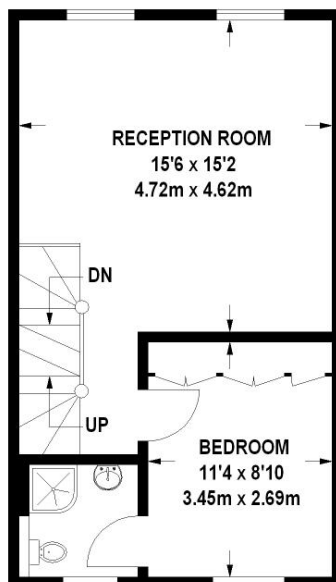
for every step...

Hillcrest

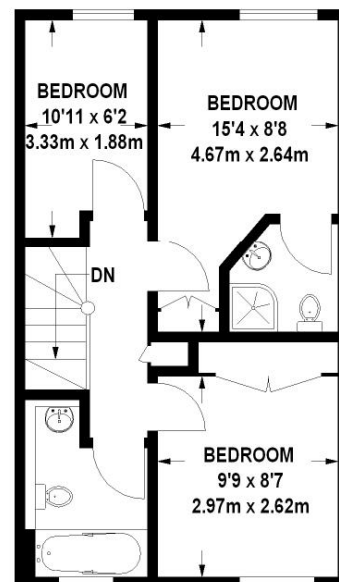
Approximate Gross Internal Area
 Ground Floor (Including Garage) = 39 sq m / 419 sq ft
 First Floor = 38 sq m / 409 sq ft
 Second Floor = 38 sq m / 409 sq ft
 Total = 115 sq m / 1238 sq ft



Ground Floor



First Floor

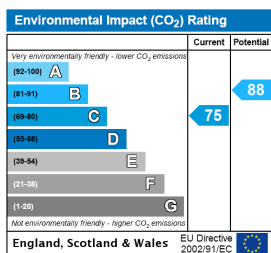
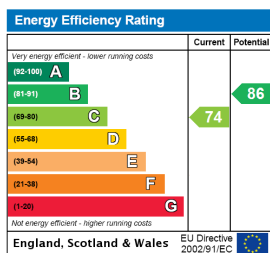


Second Floor

Viewmedia © 2014
 viewmedia.co.uk

Whilst every attempt has been made to ensure the accuracy of this floor plan, measurements of doors, windows and rooms are approximate and no responsibility is taken for any error or omission. This illustration is for identification purposes only. Measured and drawn in accordance with RICS guidelines. Not drawn to scale, unless stated. Dimensions shown are to the nearest 3" and are to the points indicated by the arrow heads.

This floorplan is for illustration purposes only and is not to scale. The position and size of doors, windows, appliances and other features are approximate.



Winkworth

Weybridge | 01932 854400 | weybridge@winkworth.co.uk

for every step...

winkworth.co.uk

Winkworth wishes to inform prospective buyers and tenants that these particulars are a guide and act as information only. All our details are given in good faith and believed to be correct at the time of printing but they don't form part of an offer or contract. No Winkworth employee has authority to make or give any representation or warranty in relation to this property. All fixtures and fittings, whether fitted or not are deemed removable by the vendor unless stated otherwise and room sizes are measured between internal wall surfaces, including furnishings.