



HARVIST ROAD, NW6

£3,000 PER MONTH PART FURNISHED

SUPERB TWO DOUBLE BEDROOM APARTMENT WITH A JULIETTE BALCONY AND TWO BATHROOMS

Kensal Rise & Queens Park | 0208 960 4947 | kensalrise@winkworth.co.uk

Winkworth

for every step...

winkworth.co.uk



DESCRIPTION:

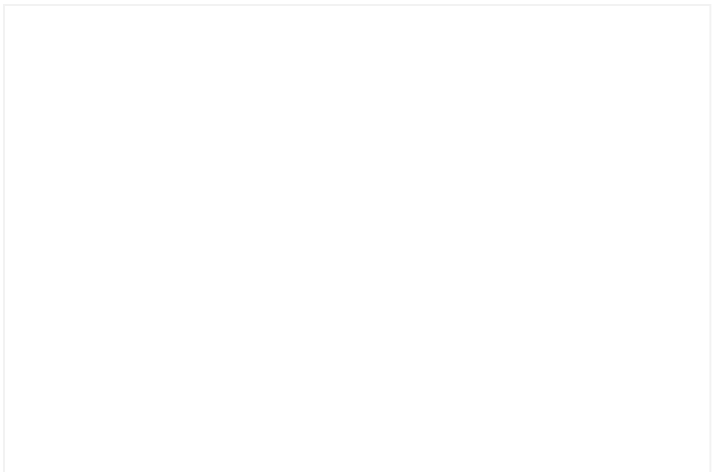
Winkworth are delighted to offer this two bedroom first floor apartment to the lettings market.

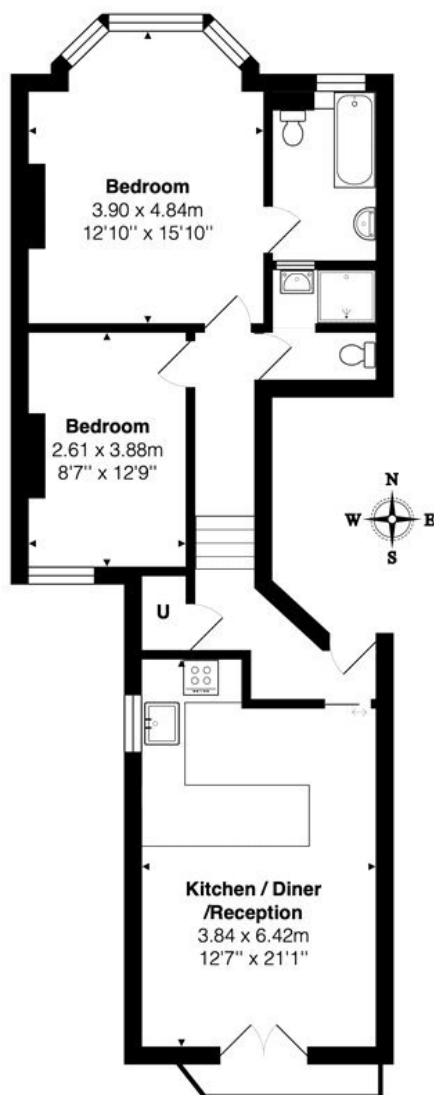
Comprises of a south facing, spacious open plan kitchen reception room to the rear with French double doors to a Juliette balcony.

Two double bedrooms, two bathrooms including one en-suite and a utility cupboard.

Following a renovation prior to the last tenancy this apartment boasts lots of natural light, hard wood flooring in the reception room and carpets in the bedrooms.

Offered part furnished with two double wardrobes, located 0.1m from Queens Park itself and available in September 2025



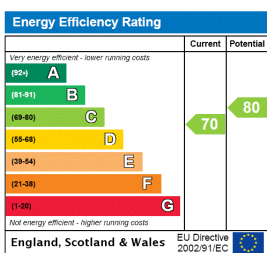


1st Floor

Total Area: 70.3 m² ... 757 ft²

All measurements are approximate and for display purposes only

This floorplan is for illustration purposes only and is not to scale. The position and size of doors, windows, appliances and other features are approximate.



Deposit: 5 weeks rent

Holding Deposit: 1 weeks rent

Council Tax Band: D

Where no figures are shown, we have been unable to ascertain the information. All figures that are shown were correct at the time of printing.

Winkworth

Kensal Rise & Queens Park | 0208 960 4947 | kensalrise@winkworth.co.uk

for every step...

winkworth.co.uk

Winkworth wishes to inform prospective buyers and tenants that these particulars are a guide and act as information only. All our details are given in good faith and believed to be correct at the time of printing but they don't form part of an offer or contract. No Winkworth employee has authority to make or give any representation or warranty in relation to this property. All fixtures and fittings, whether fitted or not are deemed removable by the vendor unless stated otherwise and room sizes are measured between internal wall surfaces, including furnishings.