



Gaynesford Road, SE23

£375,000 *Leasehold*

1  1  1 

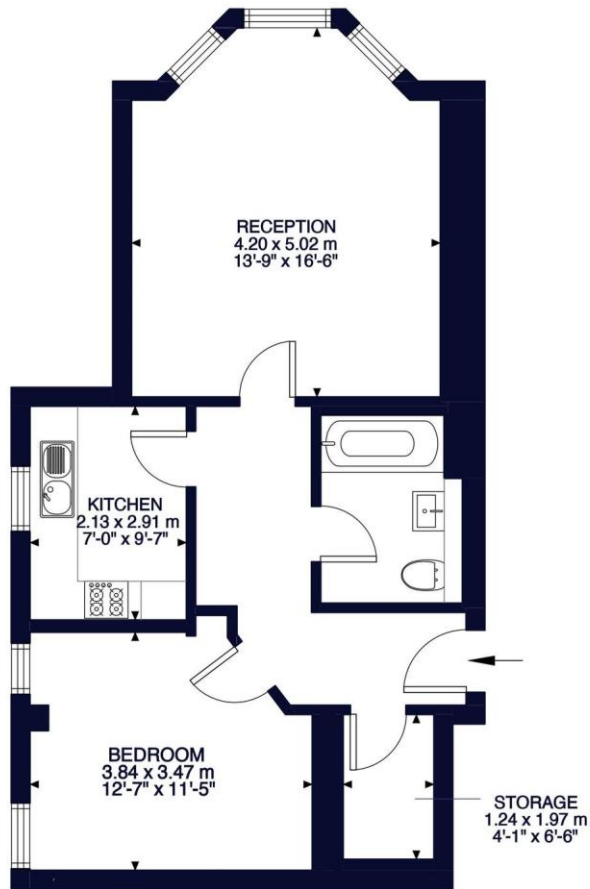
A charming ground floor one-bedroom flat in the distinctive Red House, blending period charm with modern comforts. Features include a fitted kitchen, modern bathroom and a large storage cupboard. Naturally light throughout and has access to a well maintained communal garden. Located close to amenities, green spaces and transport links.



Forest Hill

| foresthill@winkworth.co.uk

Approximate Gross Internal Area
56.57 SQ.M / 609 SQ.FT



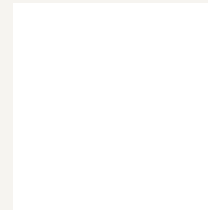
Ground Floor
609 ft²

Illustration for identification purposes only. Not to scale. Floor Plan Drawn
According To RICS Guidelines.

MATERIAL INFO

For more information, scan the QR code or visit the link below

Tenure: Leasehold
EPC rating: D



<https://www.winkworth.co.uk/sale/property/FHL260017>

Where no figures are shown, we have been unable to ascertain the information. All figures that are shown were correct at the time of printing.

Forest Hill

| foresthill@winkworth.co.uk