



## LANGDALE HOUSE, LONDON, SW1V

£325,000

LEASEHOLD

### At a glance...

- Large Studio Room
- Good Condition
- Separate Kitchen
- Bathroom
- Private Balcony
- Council Tax Band B

**Winkworth**

for every step...



Energy Efficiency Rating		Current	Potential
Very energy efficient - lower running costs			
(92-100)	<b>A</b>		
(81-91)	<b>B</b>		
(69-80)	<b>C</b>		77
(55-68)	<b>D</b>	64	
(39-54)	<b>E</b>		
(21-38)	<b>F</b>		
(1-20)	<b>G</b>		
Not energy efficient - higher running costs			
England, Scotland & Wales		EU Directive 2002/91/EC	

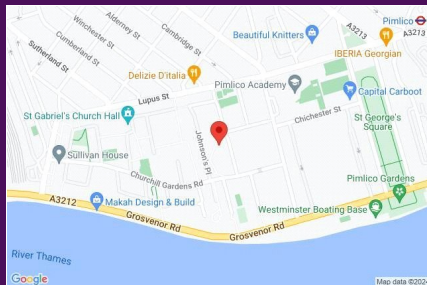
## LANGDALE HOUSE, LONDON, SW1V

£325,000

LEASEHOLD

A well proportioned first floor studio flat located within this low-rise purpose built block. A brief walk from the River Thames, this location boasts close proximity to the amenities of Dolphin Square, Pimlico and Battersea Park.

Accommodation comprises hallway, a bright and spacious studio room, bathroom and a separate modern fully fitted kitchen. The flat further benefits from additional built in storage and a lovely balcony with a green outlook.

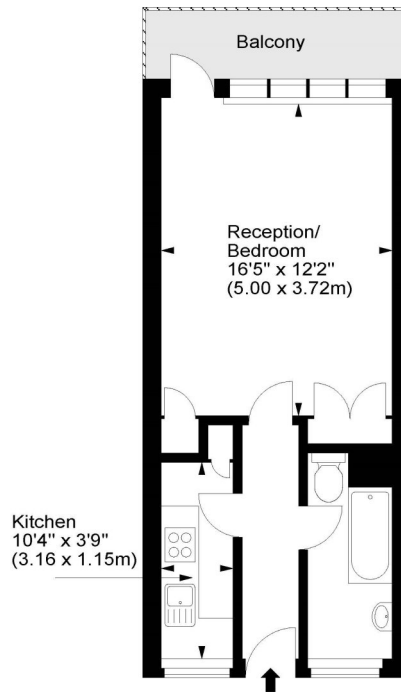


winkworth wishes to inform prospective buyers and tenants that these particulars are a guide and act as information only. All our details are given in good faith and believed to be correct at the time of printing but they don't form part of an offer or contract. No winkworth employee has authority to make or give any representation or warranty in relation to this property. All fixtures and fittings, whether fitted or not are deemed removable by the vendor unless stated otherwise and room sizes are measured between internal wall surfaces - including fire-chimneys.

### Langdale House, SW1



Approx. Gross Internal Area  
356 Sq Ft - 33.07 Sq M



First Floor

For illustration purposes only. Not to scale.  
All measurements are taken and shown at floor level.  
www.r3photography.co.uk © Photography / Floor Plans / Lease Plans / EPCs



Pimlico & Westminster

020 7828 1786

pimlico@winkworth.co.uk

winkworth.co.uk/pimlico-westminster

**Winkworth**

for every step...