



JOHN CLYNES COURT, LONDON, SW15
£1,650 PER MONTH UNFURNISHED

Winkworth



JOHN CLYNES COURT, LONDON, SW15

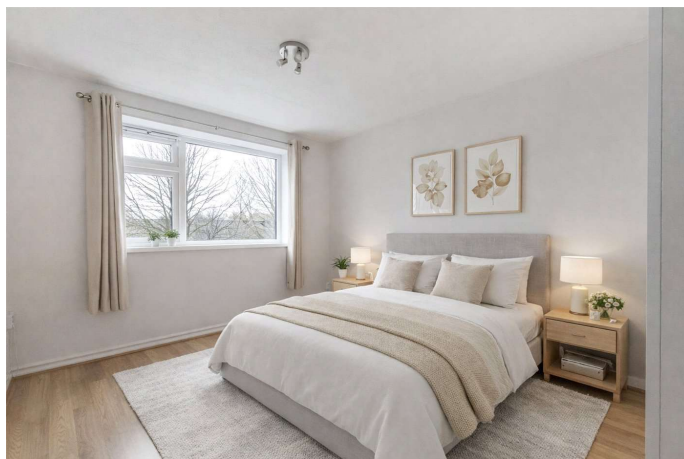
A bright and well presented one bedroom first floor flat with a private garden in West Putney.

There is a generous reception room with feature fireplace and built-in cabinetry. The double bedroom includes a large, fitted wardrobe. There is a modern fitted kitchen and bathroom with bath and shower over.

The property further benefits from a private garden and double glazing throughout.

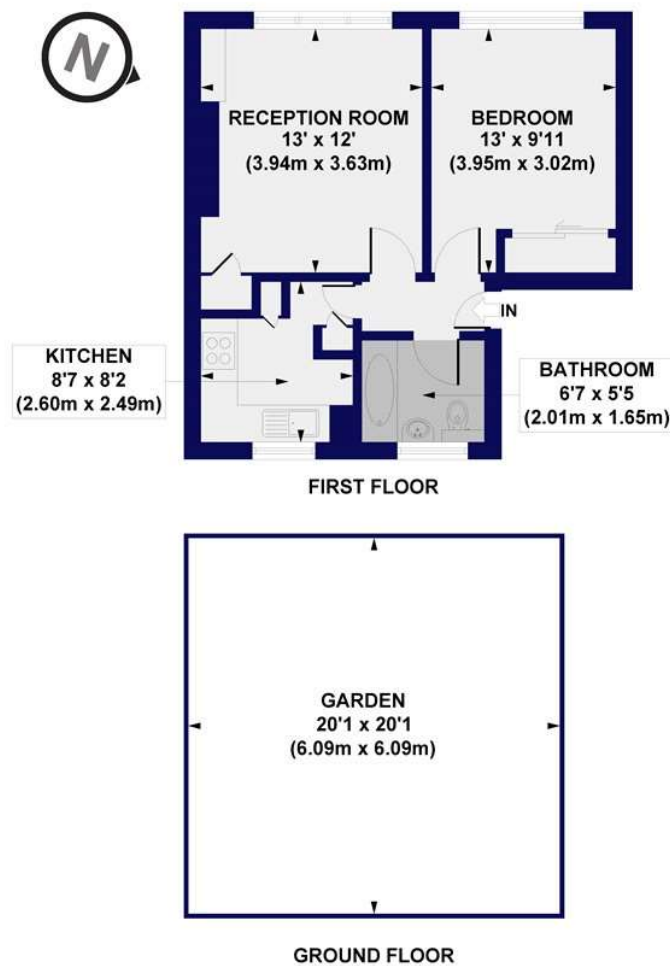
CGI furniture included in some images

John Clynes Court is located off Woodborough Road in West Putney. Barnes Station is only 0.5 miles away, along with the green open spaces of Barnes Common. Local amenities include Sainsbury's Local (0.1 miles), Tesco Express (0.2 miles) and an array of local and independent shops and cafes on the Upper Richmond Road. Local bus services including the number 337, 430 and N74 are found at the end of Woodborough Road.





John Clynes Court, Woodborough Road, SW15
Approx. Gross Internal Floor Area 427 sq. ft / 39.65 sq. m



All measurements of walls, doors, windows, fittings and appliances, including their size and location, are shown as standard sizes and do not constitute any warranty or representation by the seller, their agent or CP Creative. Any intending purchaser must satisfy himself by inspection or otherwise as to the correctness of the information contained in these plans. This plan is for illustrative purposes only and should be used as such by any prospective purchasers.

Winkworth

Putney | 020 8877 1000 | putney@winkworth.co.uk

winkworth.co.uk

Winkworth wishes to inform prospective buyers and tenants that these particulars are a guide and act as information only. All our details are given in good faith and believed to be correct at the time of printing but they don't form part of an offer or contract. No Winkworth employee has authority to make or give any representation or warranty in relation to this property. All fixtures and fittings, whether fitted or not are deemed removable by the vendor unless stated otherwise and room sizes are measured between internal wall surfaces, including furnishings.

Winkworth